



# PHILLY FLU FINDINGS

Philadelphia Department of Public Health

Seasonal Influenza Surveillance Report

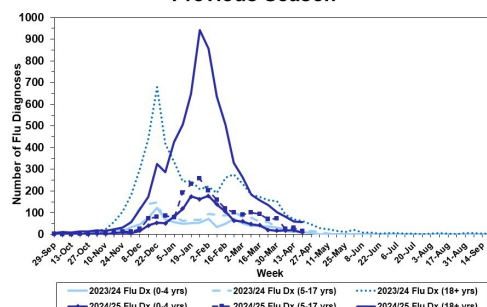
MMWR Week 17: April 20, 2025—April 26, 2025

## Philadelphia Influenza Activity

*Please note these data are provisional and subject to change.*

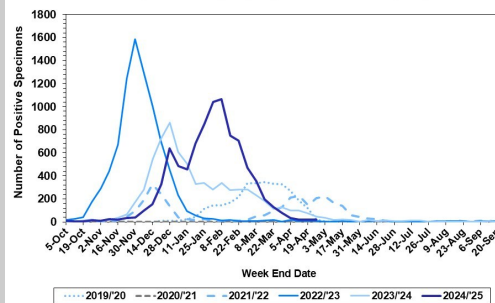
Influenza diagnoses at local emergency departments decreased for all age groups during week 17. Positive detections of influenza A at select local hospital laboratories continued to decrease during week 17 following the seasonal peak. Detections for influenza B also decreased during week 17, consistent with the past few weeks. Data from all facilities are complete from Week 8 2025 forward. Twenty-nine influenza outbreaks in long-term care facilities have been reported and confirmed ( $\geq 1$  case of laboratory confirmed flu reported in a long-term care facility) so far this season.

**Influenza Diagnoses at Philadelphia Emergency Departments, Current Season Compared with Previous Season**



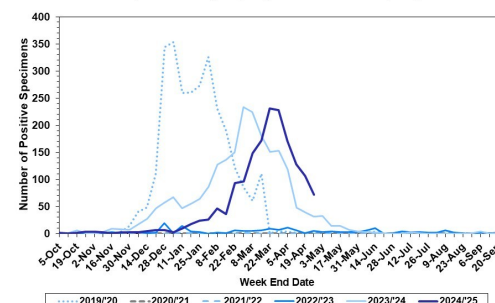
**Laboratory-Based Surveillance for Influenza A Philadelphia, 2019/2020 through 2024/2025 Seasons\***

\*Based on select hospital laboratories participating in surveillance across respiratory virus seasons



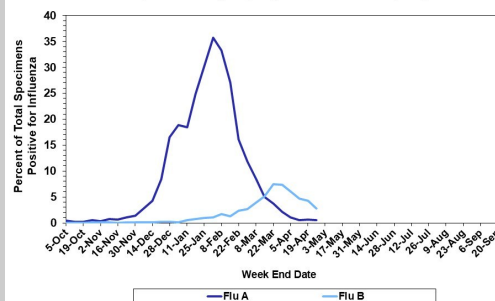
**Laboratory-Based Surveillance for Influenza B Philadelphia, 2019/2020 through 2024/2025 Seasons\***

\*Based on select hospital laboratories participating in surveillance across respiratory virus seasons



**Laboratory-Based Surveillance for Influenza (%) Philadelphia, 2024/2025 Season\***

\*Based on select hospital laboratories participating in surveillance across respiratory virus seasons



## Pennsylvania

As of April 26, 2025 the Pennsylvania Department of Health (PADOH) reported influenza activity is low. Activity levels in PA are based on laboratory confirmed influenza cases. For more information, please visit: <https://www.pa.gov/en/agencies/health/diseases-conditions/infectious-disease/respiratory-viruses/respiratory-virus-dashboard.html>

## United States

As of April 26, 2025, the CDC reported that influenza activity continues to decline nationally. In week 17, clinical laboratories reported 2,722 (4.6%) of 59,431 specimens tested positive for influenza, 29.9% of which were influenza A. Of influenza A specimens subtyped at public health labs, 67.5% have been subtyped as H1N1 and 32.5% as H3N2. In week 17, all 54 jurisdictions with sufficient data reported minimal to low activity, including minimal activity reported in Pennsylvania and New Jersey. Activity levels were calculated from outpatient data reported to ILINet. For more information, please visit: <https://www.cdc.gov/fluview/surveillance/2025-week-17.html>

**All institutional outbreaks and hospitalized and fatal cases of influenza are to be reported to PDPH.**

Phone: (215) 685-6742 Fax: (215) 238-6947

Email: [ACD@phila.gov](mailto:ACD@phila.gov)

Reporting requirements and forms are posted online at [hip.phila.gov](http://hip.phila.gov)