



# PHILLY FLU FINDINGS

Philadelphia Department of Public Health  
Seasonal Influenza Surveillance Report

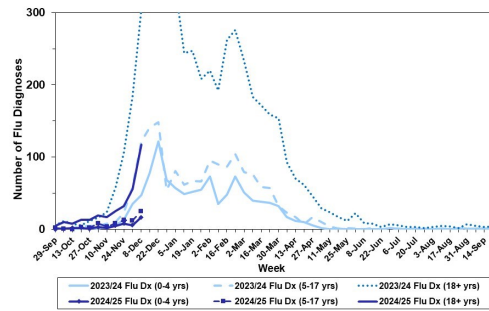
MMWR Week 50: December 8, 2024—December 14, 2024

## Philadelphia Influenza Activity

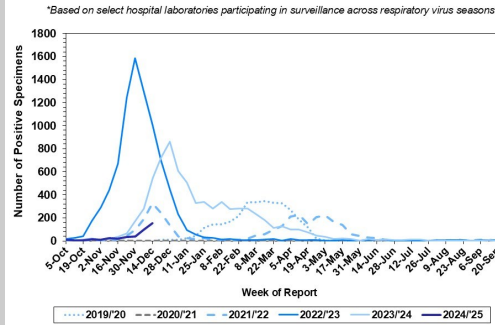
Please note these data are provisional and subject to change.

Influenza diagnoses at local emergency departments increased significantly for all age groups during week 50, with illnesses among adults 18 yrs and older particularly rising sharply. Positive detections of influenza A at select local hospital laboratories increased significantly, while detections for Influenza B remained low. One influenza outbreak has been reported and confirmed ( $\geq 1$  case of laboratory confirmed flu reported in a long-term care facility) so far this season.

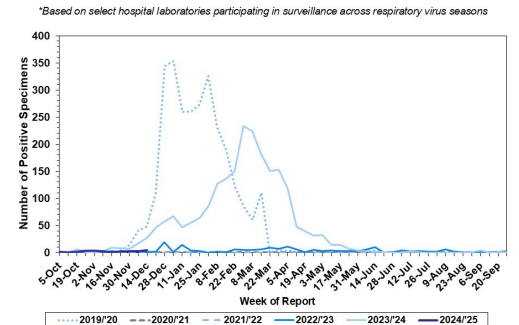
**Influenza Diagnoses at Philadelphia Emergency Departments, Current Season Compared with Previous Season**



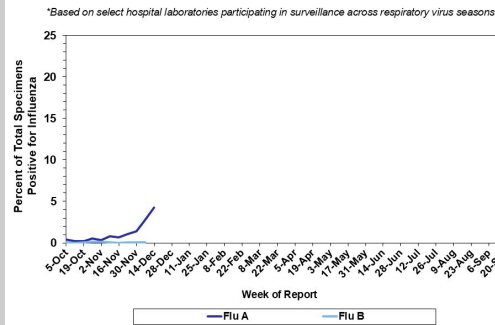
**Laboratory-Based Surveillance for Influenza A Philadelphia, 2019/2020 through 2024/2025 Seasons\***



**Laboratory-Based Surveillance for Influenza B Philadelphia, 2019/2020 through 2024/2025 Seasons\***



**Laboratory-Based Surveillance for Influenza (%) Philadelphia, 2024/2025 Season\***



## Pennsylvania

**As of December 14, 2024**, the Pennsylvania Department of Health (PADOH) reported that influenza A and B activity is low but increasing. PADOH has resumed weekly summaries for trends related to Influenza, RSV, and COVID-19. For more information, please visit: <https://www.pa.gov/en/agencies/health/diseases-conditions/infectious-disease/respiratory-viruses/respiratory-virus-dashboard.html>

## United States

**As of December 14, 2024**, the CDC reports that influenza activity is continuing to increase nationally. In week 50, clinical laboratories reported 7,831 (9.0%) of 86,686 specimens tested positive for influenza, 96.0% of which were influenza A. Of influenza A specimens subtyped at public health labs, 46.2% have been subtyped as H1N1 and 53.5% as H3N2. In week 50, 15 jurisdictions reported high to very high levels of influenza activity, including high activity reported in New Jersey. All other jurisdictions reported minimal to moderate activity. Of note, two human infections of influenza A (H3N2) variant viruses were recently reported by the Minnesota Department of Health. For more information, please visit: <https://www.cdc.gov/fluview/surveillance/2024-week-50.html>

**All institutional outbreaks and hospitalized and fatal cases of influenza are to be reported to PDPH.**

Phone: (215) 685-6742 Fax: (215) 238-6947 Email: [ACD@phila.gov](mailto:ACD@phila.gov) Reporting requirements and forms are posted online at [hip.phila.gov](http://hip.phila.gov)