



# PHILLY FLU FINDINGS

Philadelphia Department of Public Health  
Seasonal Influenza Surveillance Report

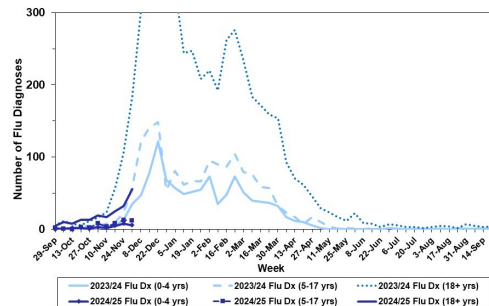
MMWR Week 49: December 1, 2024—December 7, 2024

## Philadelphia Influenza Activity

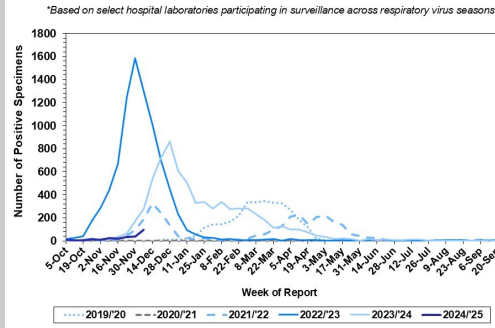
Please note these data are provisional and subject to change.

Influenza diagnoses at local emergency departments remained low but increased significantly for adults during week 49. Positive detections of influenza A and B at select local hospital laboratories both remained low but increased slightly. One influenza outbreak has been reported and confirmed ( $\geq 1$  case of laboratory confirmed flu reported in a long-term care facility) so far this season.

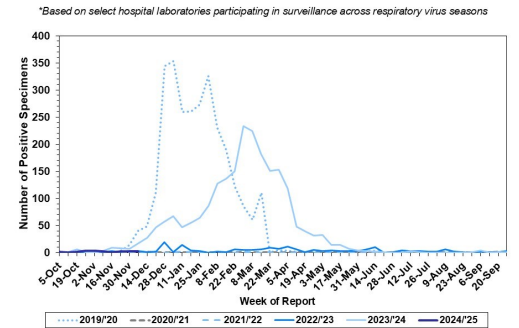
**Influenza Diagnoses at Philadelphia Emergency Departments, Current Season Compared with Previous Season**



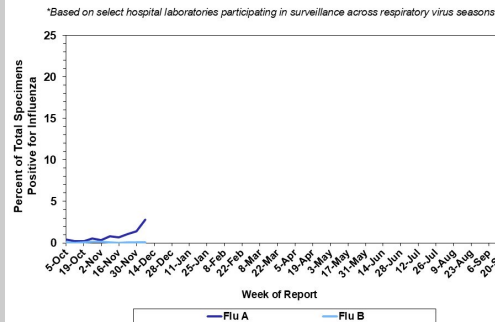
**Laboratory-Based Surveillance for Influenza A Philadelphia, 2019/2020 through 2024/2025 Seasons\***



**Laboratory-Based Surveillance for Influenza B Philadelphia, 2019/2020 through 2024/2025 Seasons\***



**Laboratory-Based Surveillance for Influenza (%) Philadelphia, 2024/2025 Season\***



## Pennsylvania

**As of December 7, 2024** the Pennsylvania Department of Health (PADOH) reported that influenza A and B activity is low but increasing. PADOH has resumed weekly summaries for trends related to Influenza, RSV, and COVID-19. For more information, please visit: <https://www.pa.gov/en/agencies/health/diseases-conditions/infectious-disease/respiratory-viruses/respiratory-virus-dashboard.html>

## United States

**As of December 7, 2024**, the CDC reports that influenza activity is continuing to increase, but overall remains low nationally. In week 49, clinical laboratories reported 4,151 specimens (5.1%) of 81,992 specimens tested positive for influenza, 94.5% of which were influenza A. Of influenza A specimens subtyped at public health labs, 39.2% have been subtyped as H1N1 and 60.8% as H3N2. In week 49, nine jurisdictions reported moderate to high levels of influenza activity. All other jurisdictions reported low to minimal activity. Of note, two human infections of influenza A (H3N2) variant viruses were recently reported by the Minnesota Department of Health. For more information, please visit: <https://www.cdc.gov/fluview/surveillance/2024-week-49.html>

**All institutional outbreaks and hospitalized and fatal cases of influenza are to be reported to PDPH.**

Phone: (215) 685-6742 Fax: (215) 238-6947 Email: [ACD@phila.gov](mailto:ACD@phila.gov) Reporting requirements and forms are posted online at [hip.phila.gov](http://hip.phila.gov)