

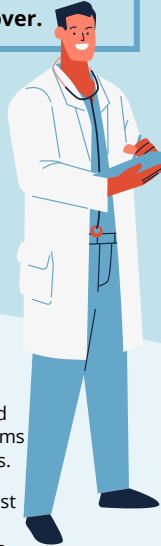
ARE YOUR RESIDENTS RECEIVING THE BEST CARE POSSIBLE? TAKE PART IN THE ICAR INITIATIVE

The Infection Control Assessment and Response (ICAR) Initiative is a collaboration between the Philadelphia Department of Public Health (PDPH) and APIC Consulting Services to provide infection prevention and control (IPC) mentoring and support to skilled nursing facilities (SNFs) in Philadelphia. For a limited time, SNFs are invited to receive a free onsite assessment followed by consultation services from highly experienced, CIC-certified APIC consultants.

- Using a modified version of the CDC's ICAR tool, your consultant will help you pinpoint key areas of IPC improvement to strengthen your facility's practices and provide better care to your residents.
- Receive a personalized visit report, action plan developed jointly with the facility, implementation support following the visit, and a comprehensive list of educational and training resources to support sustained improvement long after your visit is over.

SIGN UP TODAY (SPACE IS LIMITED)

**This is a non-regulatory, non-punitive opportunity.
To register and learn more, please reach out to us
at nbrand@apic.org, or HAI.PDPH@phila.gov.**



FAQ: ICAR INITIATIVE

Is this a regulatory survey?

No - Findings of the ICAR will not be shared beyond the facility, APIC Consulting Services and PDPH teams involved in the project, and are not formal citations.

Is this another COVID-19 project?

It is much more than that! COVID-19 response is just one focus area - your consultant will also focus on cleaning and disinfection practices, dietary services, IPC for memory care residents, hand hygiene, PPE and more.

What if we are short-staffed and/or having an outbreak?

The ICAR initiative was designed to be flexible for this very reason. APIC Consulting will work with you to set up an onsite experience that meets your facility's needs without overburdening you. Visits are scheduled jointly with the facility for a time that works for the facility.

What services will facilities receive?

Expert consultation including the ICAR assessment; a personalized visit report for IPC improvement; action plan; implementation support following the visit; comprehensive list of local and national educational and training resources; referrals for additional support if requested by the facility.