



PHILLY FLU FINDINGS

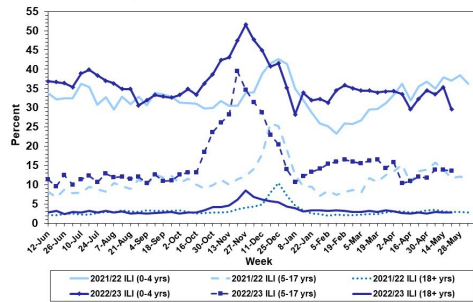
Philadelphia Department of Public Health
 Seasonal Influenza Surveillance Report
 MMWR Week 21: May 21, 2023—May 27, 2023

Philadelphia Influenza Activity

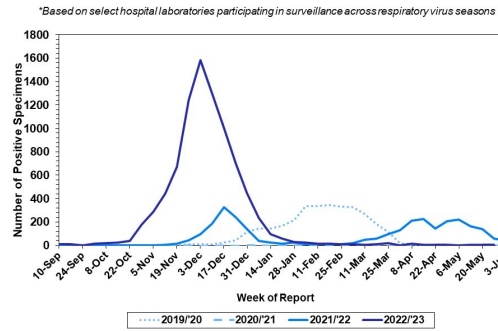
Please note these data are provisional and subject to change.

Please note: Data from one hospital is pending and will be updated once received. For week 21, influenza-like illnesses (ILI) at emergency departments declined for all age groups. Overall, ILI levels are within normal limits. Laboratory detections of influenza and activity overall both remain low. Since October 2, 2022, there have been 608 reports of severe influenza at hospitals (Philadelphia resident, positive by rapid test, PCR or culture, and hospitalized for ≥ 24 hrs). Twenty seven influenza outbreaks have been reported (≥ 1 case of laboratory confirmed flu reported in a long term care facility) so far this season. Thirteen deaths have been reported to date.

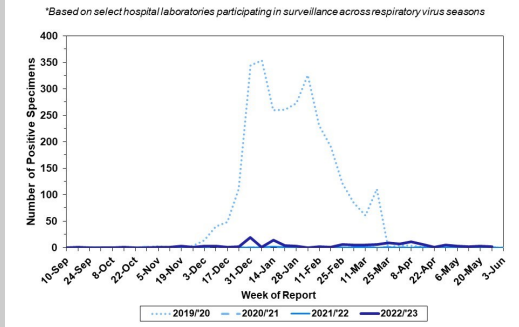
Febrile/Flu-like Illnesses at Philadelphia Emergency Departments, Current Season Compared with Previous Season



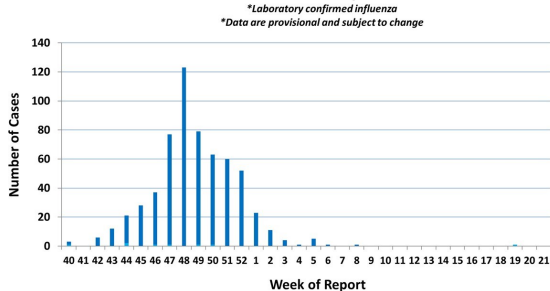
Laboratory-Based Surveillance for Influenza A Philadelphia, 2019/2020 through 2022/2023 Seasons*



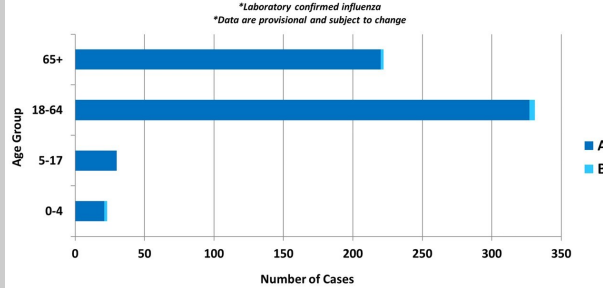
Laboratory-Based Surveillance for Influenza B Philadelphia, 2019/2020 through 2022/2023 Seasons*



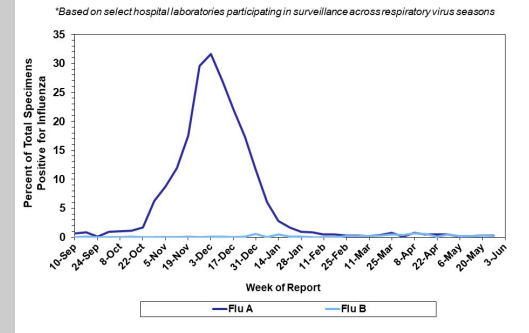
Weekly Counts of Hospitalizations by Influenza Type* Oct. 2, 2022 - May 27, 2023



Hospitalized Influenza* by Age Group and Influenza Type Oct. 2, 2022 - May 27, 2023



Laboratory-Based Surveillance for Influenza (%) Philadelphia, 2022/2023 Season*



Pennsylvania

Please note, updated data for week 21 is pending from PADOH. As of April 29, 2023, the Pennsylvania Department of Health (PADOH) has reported that flu activity remains low. Emergency department visits for flu-like symptoms are low as well. Influenza A (H3N2) viruses have been the predominant type detected for most of the season; however, influenza B has been the predominant type detected in the past few weeks. Overall, there have been a total of 186,611 laboratory confirmed cases of influenza (positive by rapid test, PCR, or culture). There have been 169 influenza associated deaths this season. For more information, please visit: <https://www.health.pa.gov/topics/disease/Flu/Pages/2022-23-Flu.aspx>

United States

As of May 27 2023, CDC will be providing an abbreviated report until the season begins again in week 40. CDC data as of May 27, 2023 indicates that influenza activity remains low nationwide. Flu related hospital admissions have remained low and outpatient visits for respiratory illness were below baseline. Clinical laboratories have reported 331 influenza detections out of 27,232 specimens tested (1.2%), 43.5% of which tested positive for influenza A. Of influenza A viruses from public health labs that have been subtyped in week 21, 13 were H1N1 and 1 was H3N2. One hundred fifty four pediatric deaths have been recorded so far this season. In week 21, one jurisdiction experienced moderate flu activity, and two had high activity. For more information, please visit: <https://www.cdc.gov/flu/weekly/index.htm>

All institutional outbreaks and hospitalized and fatal cases of influenza are to be reported to PDPH.

Phone: (215) 685-6742 Fax: (215) 238-6947 Email: ACD@phila.gov Reporting requirements and forms are posted online at hip.phila.gov