



# PHILLY FLU FINDINGS

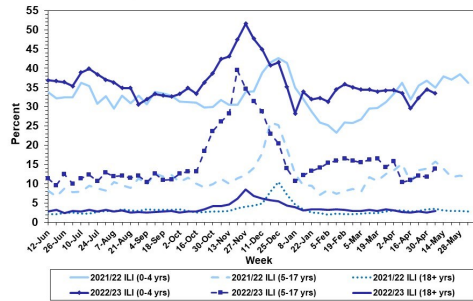
Philadelphia Department of Public Health  
Seasonal Influenza Surveillance Report  
MMWR Week 19: May 7, 2023—May 13, 2023

## Philadelphia Influenza Activity

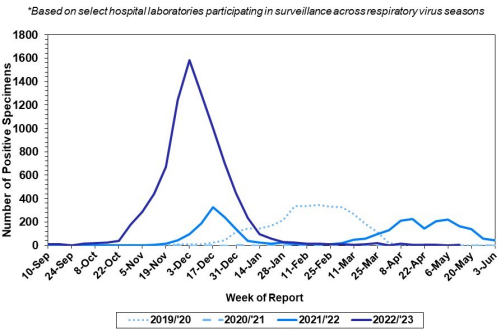
Please note these data are provisional and subject to change.

For week 19, influenza-like illnesses at emergency departments increased slightly among adolescents and adults. Laboratory detections of influenza and activity overall both remain low. Since October 2, 2022, there have been 608 reports of severe influenza at hospitals (Philadelphia resident, positive by rapid test, PCR or culture, and hospitalized for ≥ 24 hrs). Twenty seven influenza outbreaks have been reported (≥ 1 case of laboratory confirmed flu reported in a long term care facility) so far this season. Thirteen deaths have been reported to date, with one occurring in week 19.

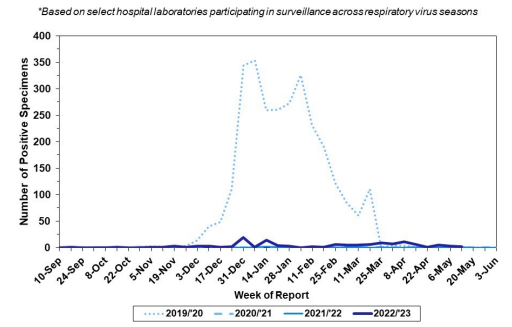
### Febrile/Flu-like Illnesses at Philadelphia Emergency Departments, Current Season Compared with Previous Season



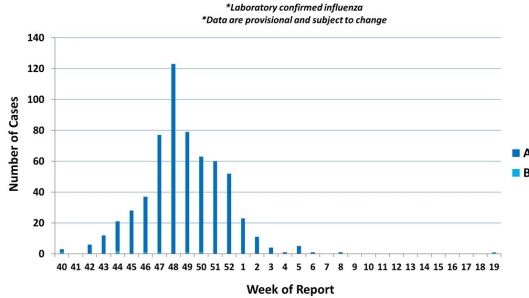
### Laboratory-Based Surveillance for Influenza A Philadelphia, 2019/2020 through 2022/2023 Seasons\*



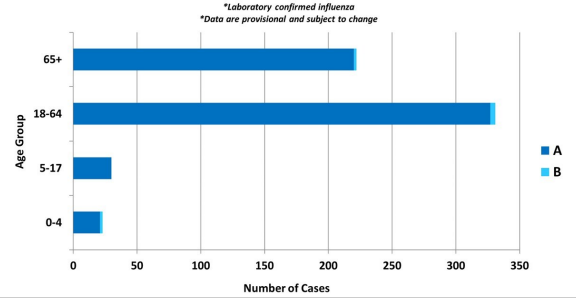
### Laboratory-Based Surveillance for Influenza B Philadelphia, 2019/2020 through 2022/2023 Seasons\*



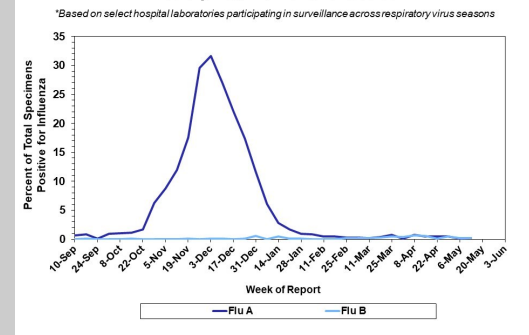
### Weekly Counts of Hospitalizations by Influenza Type\* Oct. 2, 2022 - May 13, 2023



### Hospitalized Influenza\* by Age Group and Influenza Type Oct. 2, 2022 - May 13, 2023



### Laboratory-Based Surveillance for Influenza (%) Philadelphia, 2022/2023 Season\*



## Pennsylvania

Please note, updated data for week 19 is pending from PADOH. As of April 29, 2023, the Pennsylvania Department of Health (PADOH) has reported that flu activity remains low. Emergency department visits for flu-like symptoms are low as well. Influenza A (H3N2) viruses have been the predominant type detected for most of the season; however, influenza B has been the predominant type detected in the past few weeks. Overall, there have been a total of 186,611 laboratory confirmed cases of influenza (positive by rapid test, PCR, or culture). There have been 169 influenza associated deaths this season. For more information, please visit: <https://www.health.pa.gov/topics/disease/Flu/Pages/2022-23-Flu.aspx>

## United States

As of May 13 2023, the CDC reports that influenza activity remains low nationwide. Flu related hospital admissions have remained low and nine of 10 HHS regions were below their outpatient respiratory illness baselines. Clinical laboratories have reported 290 influenza detections out of 29,723 specimens tested (1.0%), 36.6% of which tested positive for influenza A. Of influenza A viruses from public health labs that have been subtyped in week 19, one was H3N2 and 11 have been H1N1. One hundred fifty two pediatric deaths have been recorded so far this season. In week 19, no jurisdictions experienced moderate flu activity, and three had high activity. For more information, please visit: <https://www.cdc.gov/flu/weekly/index.htm>

**All institutional outbreaks and hospitalized and fatal cases of influenza are to be reported to PDPH.**

Phone: (215) 685-6742 Fax: (215) 238-6947 Email: [ACD@phila.gov](mailto:ACD@phila.gov) Reporting requirements and forms are posted online at [hip.phila.gov](http://hip.phila.gov)