



PHILLY FLU FINDINGS

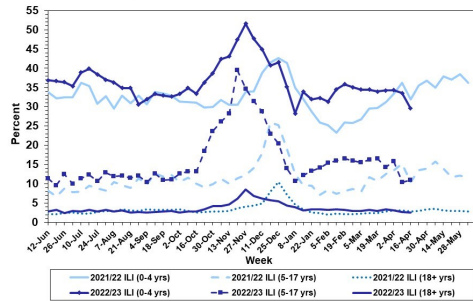
Philadelphia Department of Public Health
Seasonal Influenza Surveillance Report
MMWR Week 16: April 16, 2023—April 22, 2023

Philadelphia Influenza Activity

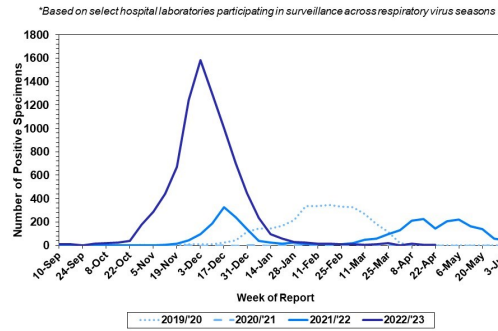
Please note these data are provisional and subject to change.

For week 16, influenza-like illnesses at emergency departments decreased sharply for children 0-4 years of age, but remained mostly unchanged for other age group. Laboratory detections of influenza and activity overall both remain low. Since October 2, 2022, there have been 541 reports of severe influenza at non-pediatric hospitals (Philadelphia resident, positive by rapid test, PCR or culture, and hospitalized for ≥ 24 hrs). Data from pediatric hospitals is pending, and will be updated once received. Twenty seven influenza outbreaks have been reported (≥ 1 case of laboratory confirmed flu reported in a long term care facility) so far this season. Twelve deaths have been reported to date.

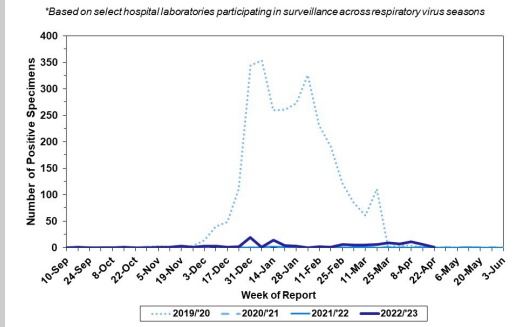
Febrile/Flu-like Illnesses at Philadelphia Emergency Departments, Current Season Compared with Previous Season



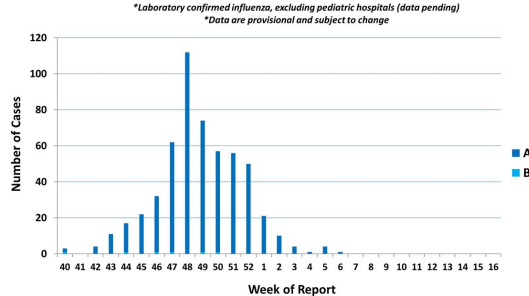
Laboratory-Based Surveillance for Influenza A Philadelphia, 2019/2020 through 2022/2023 Seasons*



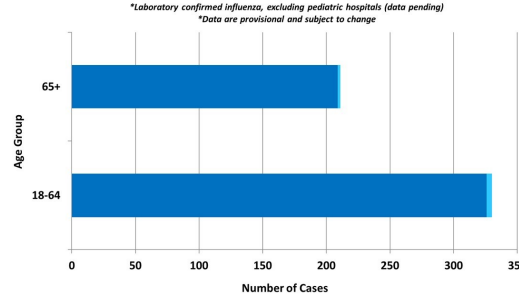
Laboratory-Based Surveillance for Influenza B Philadelphia, 2019/2020 through 2022/2023 Seasons*



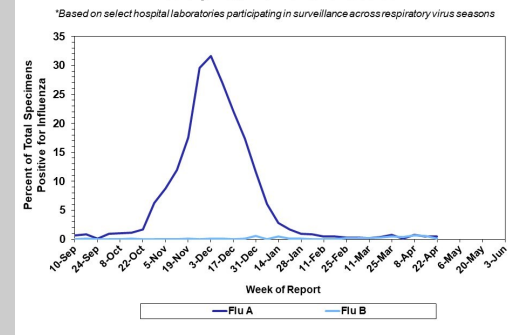
Weekly Counts of Hospitalizations by Influenza Type* Oct. 2, 2022 - Apr. 22, 2023



Hospitalized Influenza* by Age Group and Influenza Type Oct. 2, 2022 - Apr. 22, 2023



Laboratory-Based Surveillance for Influenza (%) Philadelphia, 2022/2023 Season*



Pennsylvania

As of April 22, 2023, the Pennsylvania Department of Health (PDOH) has reported that flu activity remains low. Emergency department visits for flu-like symptoms are moderate as well. Influenza A (H3N2) viruses have been the predominant type detected for most of the season; however, influenza B has been the predominant type detected in the past few weeks. Overall, there have been a total of 186,245 laboratory confirmed cases of influenza (positive by rapid test, PCR, or culture). There have been 162 influenza associated deaths this season. For more information, please visit: <https://www.health.pa.gov/topics/disease/Flu/Pages/2022-23-Flu.aspx>

United States

As of April 22 2023, the CDC reports that influenza activity remains low nationwide. Flu related hospital admissions have remained low and nine of 10 HHS regions were below their outpatient respiratory illness baselines. Clinical laboratories have reported 283 influenza detections out of 35,045 specimens tested (0.8%), 43.8% of which tested positive for influenza A. Of influenza A viruses from public health labs that have been subtyped in week 16, four were H3N2 and 13 have been H1N1. One hundred forty five pediatric deaths have been recorded so far this season. In week 16, one jurisdiction experienced moderate flu activity, and one had high activity. For more information, please visit: <https://www.cdc.gov/flu/weekly/index.htm>

All institutional outbreaks and hospitalized and fatal cases of influenza are to be reported to PDPH.

Phone: (215) 685-6742 Fax: (215) 238-6947 Email: ACD@phila.gov Reporting requirements and forms are posted online at hip.phila.gov