



PHILLY FLU FINDINGS

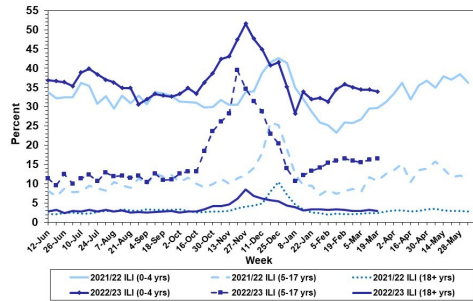
Philadelphia Department of Public Health
Seasonal Influenza Surveillance Report
MMWR Week 12: March 19, 2023—March 25, 2023

Philadelphia Influenza Activity

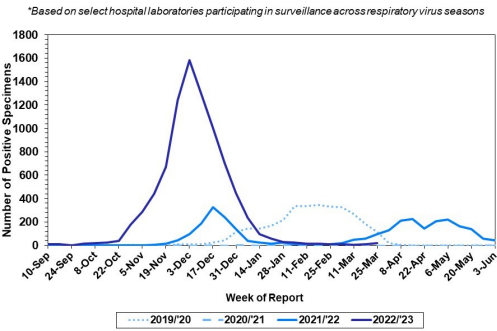
Please note these data are provisional and subject to change.

For week 12, influenza-like illnesses at emergency departments remained level for all age groups. Laboratory detections of influenza and activity overall both remain low but increased slightly in week 12. Since October 2, 2022, there have been 520 reports of severe influenza at non-pediatric hospitals (Philadelphia resident, positive by rapid test, PCR or culture, and hospitalized for ≥ 24 hrs). Data from pediatric hospitals is pending, and will be updated once received. Twenty six influenza outbreaks have been reported (≥ 1 case of laboratory confirmed flu reported in a long term care facility) so far this season. Twelve deaths have been reported to date.

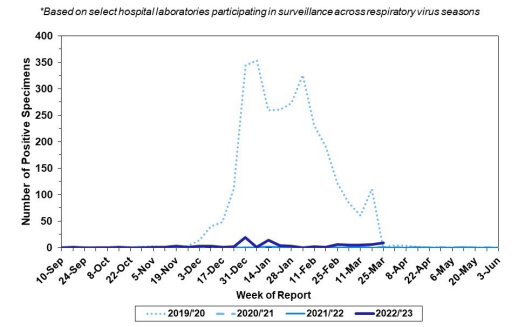
Febrile/Flu-like Illnesses at Philadelphia Emergency Departments, Current Season Compared with Previous Season



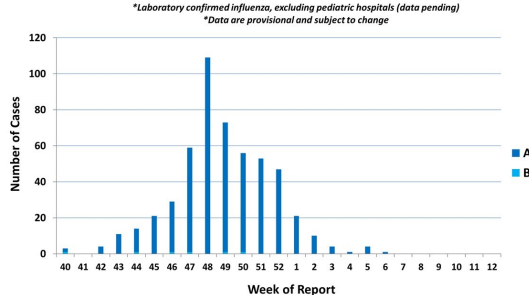
Laboratory-Based Surveillance for Influenza A Philadelphia, 2019/2020 through 2022/2023 Seasons*



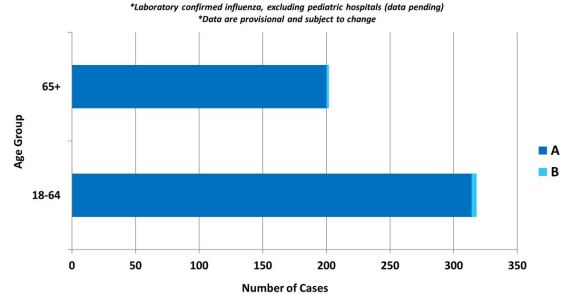
Laboratory-Based Surveillance for Influenza B Philadelphia, 2019/2020 through 2022/2023 Seasons*



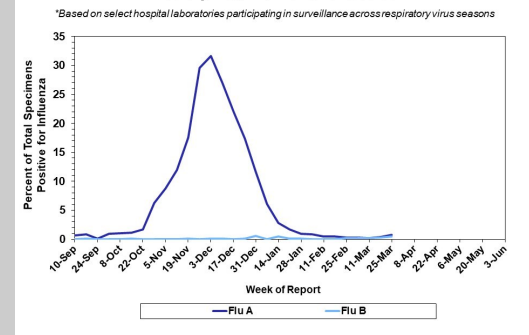
Weekly Counts of Hospitalizations by Influenza Type* Oct. 2, 2022 - Mar. 25, 2023



Hospitalized Influenza* by Age Group and Influenza Type Oct. 2, 2022 - Mar. 25, 2023



Laboratory-Based Surveillance for Influenza (%) Philadelphia, 2022/2023 Season*



Pennsylvania

As of March 25, 2023, the Pennsylvania Department of Health (PDOH) has reported that flu activity has declined and activity is low overall. Emergency department visits for flu-like symptoms are moderate as well. Influenza A (H3N2) viruses have been identified as the predominant type detected and overall there have been a total of 183,776 laboratory confirmed cases of influenza (positive by rapid test, PCR, or culture). There have been 156 influenza associated deaths this season. For more information, please visit: <https://www.health.pa.gov/topics/disease/Flu/Pages/2022-23-Flu.aspx>

United States

As of March 25, 2023, the CDC reports that influenza activity is low nationwide. Flu related hospital admissions have remained low and 8 of 10 HHS regions were below their outpatient respiratory illness baselines. Clinical laboratories have reported 626 influenza detections out of 66,542 specimens tested (0.9%), 98.6% of which tested positive for influenza A. Of influenza A viruses that have been subtyped in week 12, 58.8% have been H3N2 and 41.2% have been H1N1. One hundred thirty eight pediatric deaths have been recorded so far this season. In week 12, 3 jurisdictions experienced moderate flu activity, while 2 had high activity. For more information, please visit: <https://www.cdc.gov/flu/weekly/index.htm>

All institutional outbreaks and hospitalized and fatal cases of influenza are to be reported to PDPH.

Phone: (215) 685-6742 Fax: (215) 238-6947 Email: ACD@phila.gov Reporting requirements and forms are posted online at hip.phila.gov