



PHILLY FLU FINDINGS

Philadelphia Department of Public Health
Seasonal Influenza Surveillance Report

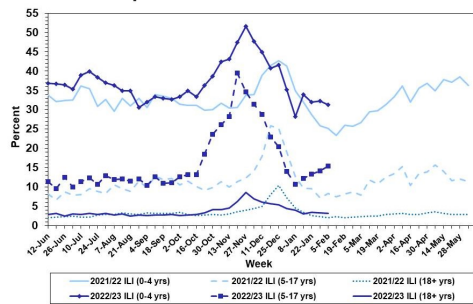
MMWR Week 06: February 5, 2023—February 11, 2023

Philadelphia Influenza Activity

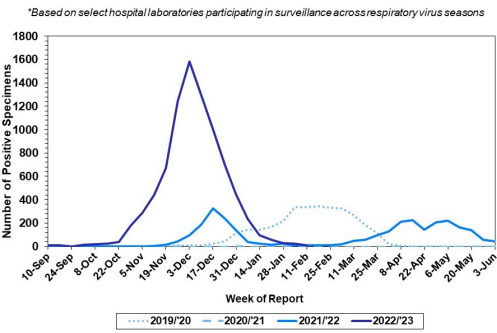
Please note these data are provisional and subject to change.

Please note: data from one hospital is pending and will be updated once received. For week 6, influenza-like illnesses increased for children ages 5-17 years but was unchanged for adults. Laboratory detections of influenza and activity overall both remain low. Since October 2, 2022, there have been 460 reports of severe influenza at non-pediatric hospitals (Philadelphia resident, positive by rapid test, PCR or culture, and hospitalized for ≥ 24 hrs). Data from pediatric hospitals is pending, and will be updated once received. Twenty six influenza outbreaks have been reported (≥ 1 case of laboratory confirmed flu reported in a long term care facility) so far this season. Eleven deaths have been reported to date.

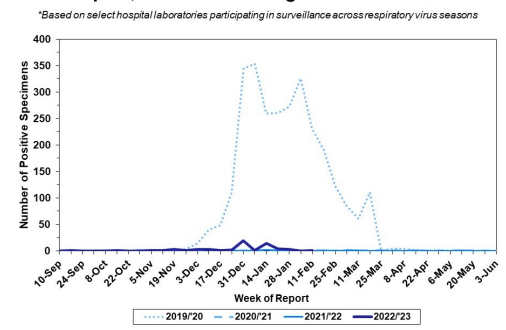
Febrile/Flu-like Illnesses at Philadelphia Emergency Departments, Current Season Compared with Previous Season



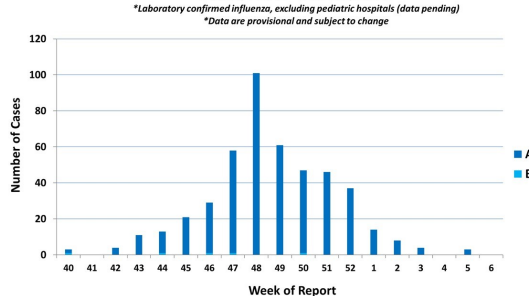
Laboratory-Based Surveillance for Influenza A Philadelphia, 2019/2020 through 2022/23 Seasons*



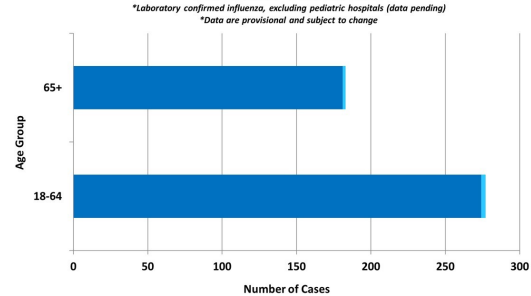
Laboratory-Based Surveillance for Influenza B Philadelphia, 2019/2020 through 2022/23 Seasons*



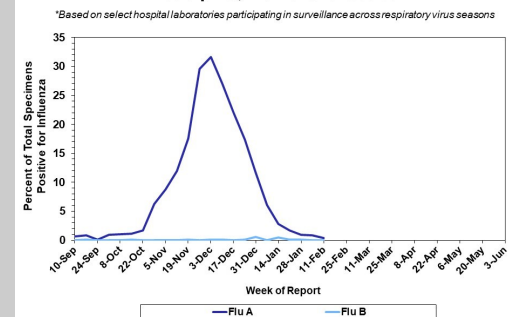
Weekly Counts of Hospitalizations by Influenza Type* Oct. 2, 2022 - Feb. 11, 2023



Hospitalized Influenza* by Age Group and Influenza Type Oct. 2, 2022 - Feb. 11, 2023



Laboratory-Based Surveillance for Influenza (%) Philadelphia, 2022/23 Season*



Pennsylvania

As of February 11, 2023, the Pennsylvania Department of Health (PDH) has reported that flu activity has declined and activity is low overall. Emergency department visits for flu-like symptoms are moderate as well. Influenza A (H3N2) viruses have been identified as the predominant type detected and overall there have been a total of 178,786 laboratory confirmed cases of influenza (positive by rapid test, PCR, or culture). There have been 110 influenza associated deaths this season. For more information, please visit: <https://www.health.pa.gov/topics/disease/Flu/Pages/2022-23-Flu.aspx>

United States

As of February 11, 2023, the CDC reports that influenza activity is low nationwide. Flu related hospital admissions have decreased compared to the previous week and 7 of 10 HHS regions were below their outpatient respiratory illness baselines. Clinical laboratories have reported 1,155 influenza detections out of 84,389 specimens tested (1.4%), 82.3% of which tested positive for influenza A. Of influenza A viruses that have been subtyped in week 6, 44.0% have been H3N2 and 56.0% have been H1N1. One hundred eleven pediatric deaths have been recorded so far this season. In week 6, 7 jurisdictions experienced moderate flu activity, while 3 had high activity. For more information, please visit: <https://www.cdc.gov/flu/weekly/index.htm>

All institutional outbreaks and hospitalized and fatal cases of influenza are to be reported to PDPH.

Phone: (215) 685-6742 Fax: (215) 238-6947 Email: ACD@phila.gov Reporting requirements and forms are posted online at hip.phila.gov