



PHILLY FLU FINDINGS

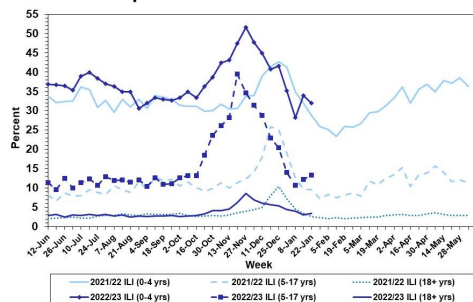
Philadelphia Department of Public Health
Seasonal Influenza Surveillance Report
MMWR Week 04: January 22, 2023—January 28, 2023

Philadelphia Influenza Activity

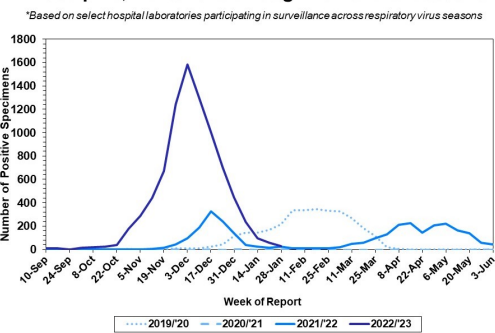
Please note these data are provisional and subject to change.

For week 4, influenza-like illnesses increased for children 5-17 years and adults while decreasing for children ages 0-4 years. Laboratory detections of influenza continue to decline and activity overall is low, with influenza A remaining the predominant type detected. Since October 2, 2022, there have been 446 reports of severe influenza at non-pediatric hospitals (Philadelphia resident, positive by rapid test, PCR or culture, and hospitalized for ≥ 24 hrs). Data from pediatric hospitals is still pending, and will be updated once received. Twenty five influenza outbreaks have been reported (≥ 1 case of laboratory confirmed flu reported in a long term care facility) so far this season. Ten deaths have been reported to date this season.

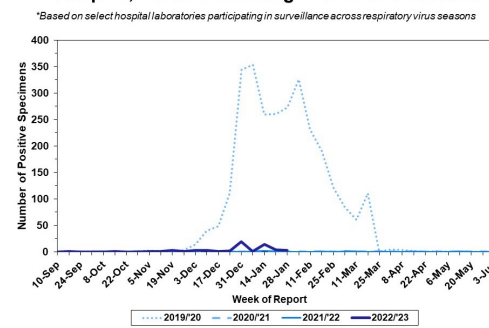
Febrile/Flu-like Illnesses at Philadelphia Emergency Departments, Current Season Compared with Previous Season



Laboratory-Based Surveillance for Influenza A Philadelphia, 2019/2020 through 2022/23 Seasons*

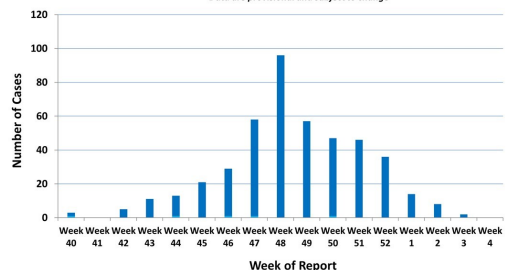


Laboratory-Based Surveillance for Influenza B Philadelphia, 2019/2020 through 2022/23 Seasons*



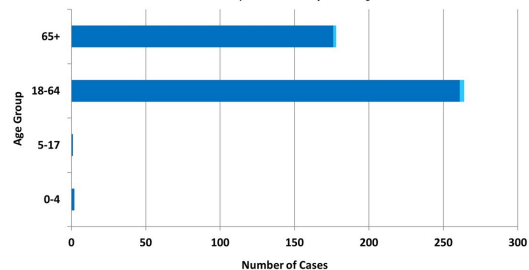
Weekly Counts of Hospitalizations by Influenza Type* Oct. 2, 2022 - Jan. 28, 2023

*Laboratory confirmed influenza, excluding pediatric hospitals (data pending)
*Data are provisional and subject to change



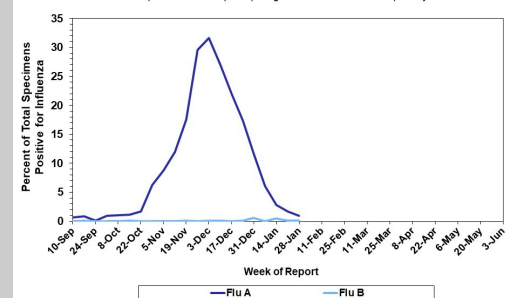
Hospitalized Influenza* by Age Group and Influenza Type Oct. 2, 2022 - Jan. 28, 2023

*Laboratory confirmed influenza, excluding pediatric hospitals (data pending)
*Data are provisional and subject to change



Laboratory-Based Surveillance for Influenza (%) Philadelphia, 2022/23 Season*

*Based on select hospital laboratories participating in surveillance across respiratory virus seasons



Pennsylvania

As of January 28, 2023, the Pennsylvania Department of Health (PDH) has reported that flu activity has declined and activity is low overall. Emergency department visits for flu-like symptoms are moderate as well. Influenza A (H3N2) viruses have been identified as the predominant type detected and overall there have been a total of 176,498 laboratory confirmed cases of influenza (positive by rapid test, PCR, or culture). There have been 101 influenza associated deaths this season. For more information, please visit: <https://www.health.pa.gov/topics/disease/Flu/Pages/2022-23-Flu.aspx>

United States

As of January 28, 2023, the CDC reports that influenza activity continues to decline nationwide. The cumulative hospitalization rate is higher than the rate observed in week 4 during every previous season since 2010-2011; however, flu hospital admissions have continued to decrease in the past few weeks. Clinical laboratories have reported 1,483 influenza detections out of 69,223 specimens tested (2.1%), 94.1% of which tested positive for influenza A. Of influenza A viruses that have been subtyped in week 4, 62% have been H3N2 and 38% have been H1N1. Ninety seven pediatric deaths have been recorded so far this season. In week 4, 5 jurisdictions experienced moderated flu activity, while 3 had high activity and one had very high activity. For more information, please visit: <https://www.cdc.gov/flu/weekly/index.htm>

All institutional outbreaks and hospitalized and fatal cases of influenza are to be reported to PDPH.

Phone: (215) 685-6742 Fax: (215) 238-6947

Email: ACD@phila.gov

Reporting requirements and forms are posted online at hip.phila.gov