



PHILLY FLU FINDINGS

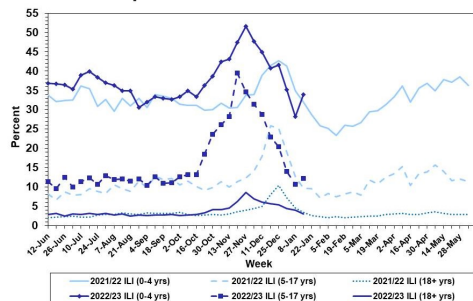
Philadelphia Department of Public Health
Seasonal Influenza Surveillance Report
MMWR Week 03: January 15, 2023—January 21, 2023

Philadelphia Influenza Activity

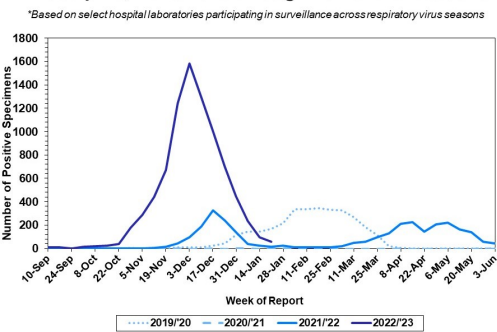
Please note these data are provisional and subject to change.

For week 3, influenza-like illnesses rebounded for children and adolescents while remaining unchanged for adults. Laboratory detections of influenza continued to decline and activity overall was low, with influenza A remaining the predominant type detected. Since October 2, 2022, there have been 421 reports of severe influenza at non-pediatric hospitals (Philadelphia resident, positive by rapid test, PCR or culture, and hospitalized for ≥ 24 hrs). Data from pediatric hospitals is still pending, and will be updated once received. Twenty four influenza outbreaks have been reported (≥ 1 case of laboratory confirmed flu reported in a long term care facility) so far this season. Ten deaths have been reported to date this season.

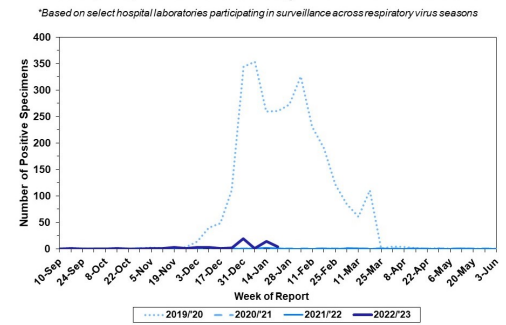
Febrile/Flu-like Illnesses at Philadelphia Emergency Departments, Current Season Compared with Previous Season



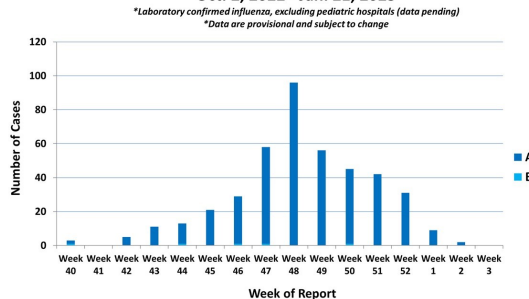
Laboratory-Based Surveillance for Influenza A Philadelphia, 2019/2020 through 2022/23 Seasons*



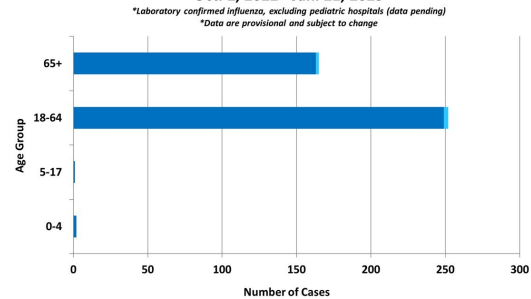
Laboratory-Based Surveillance for Influenza B Philadelphia, 2019/2020 through 2022/23 Seasons*



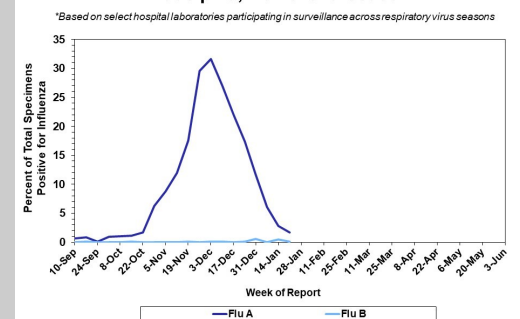
Weekly Counts of Hospitalizations by Influenza Type* Oct. 2, 2022 - Jan. 21, 2023



Hospitalized Influenza* by Age Group and Influenza Type Oct. 2, 2022 - Jan. 21, 2023



Laboratory-Based Surveillance for Influenza (%) Philadelphia, 2022/23 Season*



Pennsylvania

As of January 21, 2023, the Pennsylvania Department of Health (PDH) has reported that flu activity has declined and activity is mild overall. Emergency department visits for flu-like symptoms are moderate as well. Influenza A (H3N2) viruses have been identified as the predominant type detected and overall there have been a total of 174,964 laboratory confirmed cases of influenza (positive by rapid test, PCR, or culture). There have been 84 influenza associated deaths this season. For more information, please visit: <https://www.health.pa.gov/topics/disease/Flu/Pages/2022-23-Flu.aspx>

United States

As of January 21, 2023, the CDC reports that influenza activity continues to decline nationwide. The cumulative hospitalization rate is higher than the rate observed in week 3 during every previous season since 2010-2011; however, flu hospital admissions have decreased compared to the previous week. Clinical laboratories have reported 2,588 influenza detections out of 84,499 specimens tested (3.0%), 96% of which tested positive for influenza A. Of influenza A viruses that have been subtyped in week 3, 73% have been H3N2 and 27% have been H1N1. Ninety one pediatric deaths have been recorded so far this season. In week 3, 7 jurisdictions experienced moderated flu activity, while 3 had high or very high activity. For more information, please visit: <https://www.cdc.gov/flu/weekly/index.htm>

All institutional outbreaks and hospitalized and fatal cases of influenza are to be reported to PDPH.

Phone: (215) 685-6742 Fax: (215) 238-6947 Email: ACD@phila.gov Reporting requirements and forms are posted online at hip.phila.gov