



# PHILLY FLU FINDINGS

Philadelphia Department of Public Health

Seasonal Influenza Surveillance Report

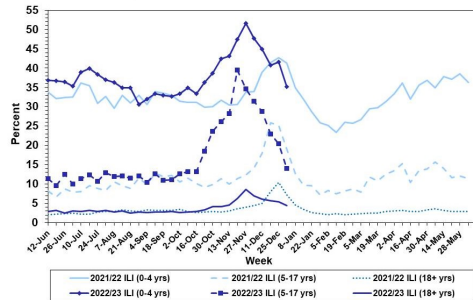
MMWR Week 01: January 1, 2023—January 7, 2023

## Philadelphia Influenza Activity

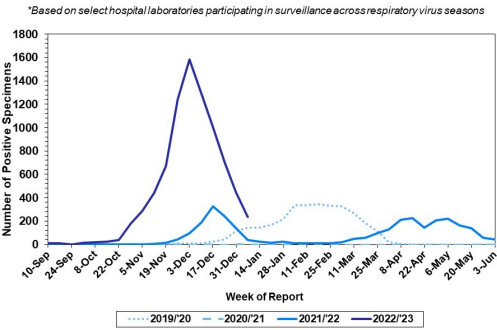
Please note these data are provisional and subject to change.

For week 1, influenza-like illnesses declined for all ages. Laboratory detections of influenza continued to decline sharply overall, with influenza A remaining the predominant type detected. Since October 2, 2022, there have been 359 reports of severe influenza at non-pediatric hospitals (Philadelphia resident, positive by rapid test, PCR or culture, and hospitalized for  $\geq 24$  hrs). Data from pediatric hospitals is still pending, and will be updated once received. Twenty four influenza outbreaks have been reported ( $\geq 1$  case of laboratory confirmed flu reported in a long term care facility) so far this season. Five deaths have been reported to date this season.

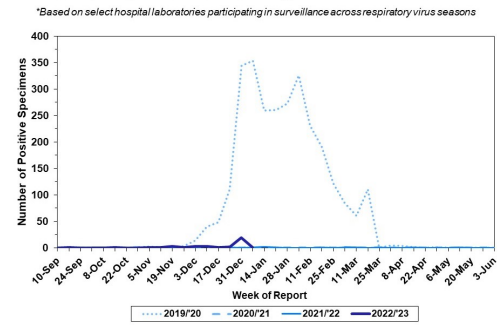
Febrile/Flu-like Illnesses at Philadelphia Emergency Departments, Current Season Compared with Previous Season



Laboratory-Based Surveillance for Influenza A Philadelphia, 2019/2020 through 2022/23 Seasons\*

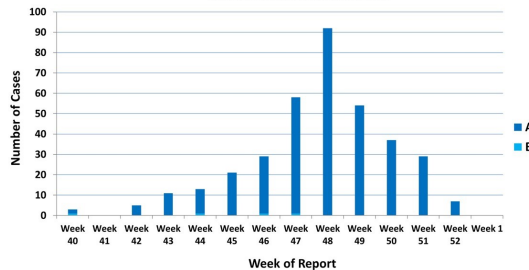


Laboratory-Based Surveillance for Influenza B Philadelphia, 2019/2020 through 2022/23 Seasons\*



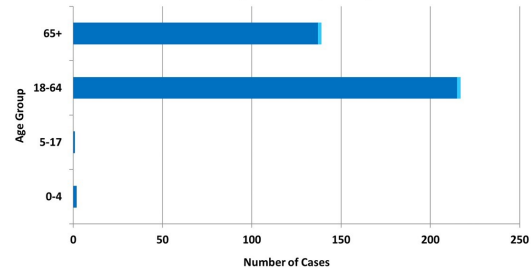
Weekly Counts of Hospitalizations by Influenza Type\* Oct. 2, 2022 - Jan. 7, 2023

\*Laboratory confirmed influenza, excluding pediatric hospitals (data pending)  
\*Data are provisional and subject to change



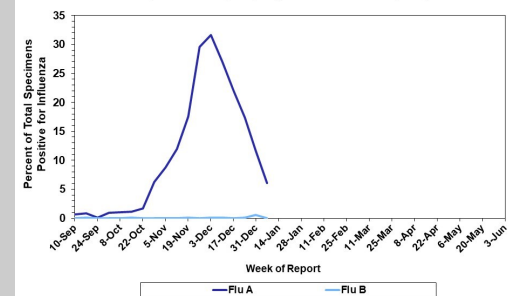
Hospitalized Influenza\* by Age Group and Influenza Type Oct. 2, 2022 - Jan. 7, 2023

\*Laboratory confirmed influenza, excluding pediatric hospitals (data pending)  
\*Data are provisional and subject to change



Laboratory-Based Surveillance for Influenza (%) Philadelphia, 2022/23 Season\*

\*Based on select hospital laboratories participating in surveillance across respiratory virus seasons



## Pennsylvania

As of January 7, 2023 The Pennsylvania Department of Health (PDH) has reported that flu activity is still high and is higher than past flu seasons for this time of year. However, flu activity continues to decrease. Emergency department visits for flu-like symptoms remain higher than usual for this time of year but have also started to decline. Influenza A (H3N2) viruses have been identified as the predominant type detected and overall there have been a total of 168,399 laboratory confirmed cases of influenza (positive by rapid test, PCR, or culture). There have been 62 influenza associated deaths this season. For more information, please visit: <https://www.health.pa.gov/topics/disease/Flu/Pages/2022-23-Flu.aspx>

## United States

As of January 7, 2023, the CDC reports that influenza activity is still ongoing, but most areas are seeing consistent declines in activity. The cumulative hospitalization rate is higher than the rate observed in week 1 during every previous season since 2010-2011. Clinical laboratories have reported 8,281 influenza detections out of 96,123 specimens tested (8.6%), 98.6% of which tested positive for influenza A. Of influenza A viruses that have been subtyped, 72% have been H3N2 and 28% have been H1N1. Seventy nine pediatric deaths have been recorded so far this season. In week 1, 14 jurisdictions experienced moderate flu activity, while 23 had high or very high activity. For more information, please visit: <https://www.cdc.gov/flu/weekly/index.htm>

All institutional outbreaks and hospitalized and fatal cases of influenza are to be reported to PDPH.

Phone: (215) 685-6742 Fax: (215) 238-6947

Email: [ACD@phila.gov](mailto:ACD@phila.gov)

Reporting requirements and forms are posted online at [hip.phila.gov](http://hip.phila.gov)