



# PHILLY FLU FINDINGS

Philadelphia Department of Public Health  
Seasonal Influenza Surveillance Report

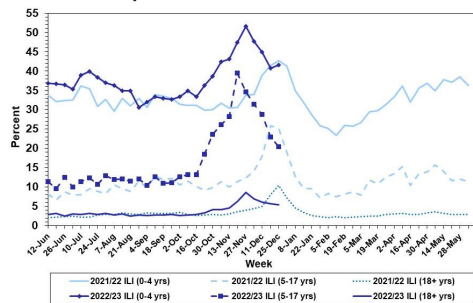
MMWR Week 52: December 25, 2022—December 31, 2022

## Philadelphia Influenza Activity

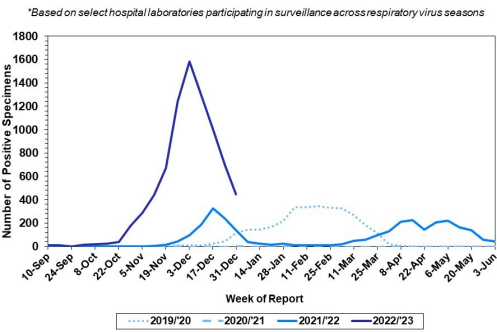
Please note these data are provisional and subject to change.

For week 52, influenza-like illness continued to decrease for adults but increased slightly for children 0-4 years. Laboratory detections of influenza continued to decline sharply overall, with influenza A remaining the predominant type detected. Since October 2, 2022, there have been 279 reports of severe influenza at non-pediatric hospitals (Philadelphia resident, positive by rapid test, PCR or culture, and hospitalized for  $\geq 24$  hrs). Data from pediatric hospitals is still pending, and will be updated once received. Twenty influenza outbreaks have been reported ( $\geq 1$  case of laboratory confirmed flu reported in a long term care facility) so far this season. Three deaths have been reported to date this season.

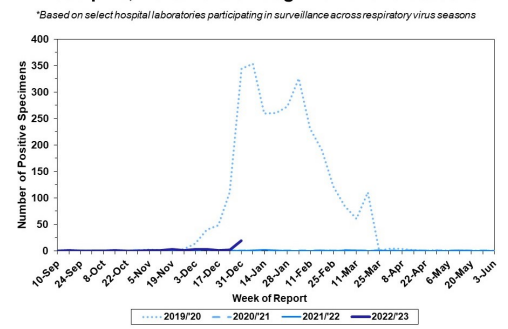
Febrile/Flu-like Illnesses at Philadelphia Emergency Departments, Current Season Compared with Previous Season



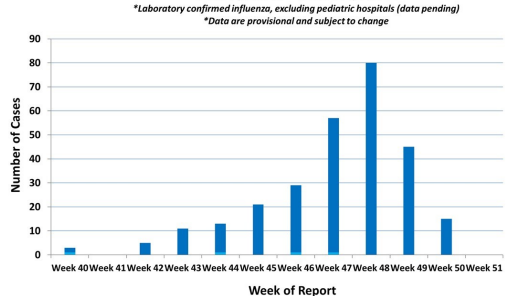
Laboratory-Based Surveillance for Influenza A Philadelphia, 2019/2020 through 2022/2023 Seasons\*



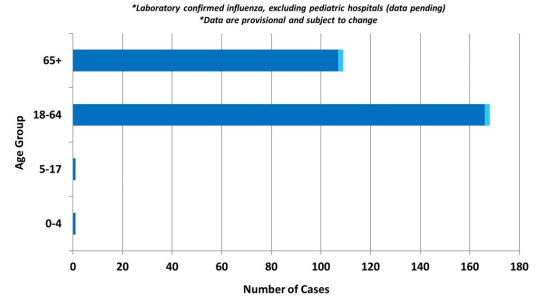
Laboratory-Based Surveillance for Influenza B Philadelphia, 2019/2020 through 2022/2023 Seasons\*



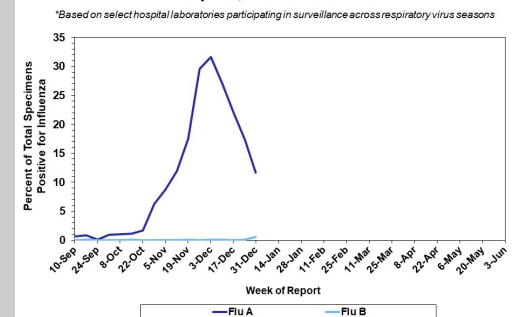
Weekly Counts of Hospitalizations by Influenza Type\* Oct. 2, 2022 - Dec. 24, 2022



Hospitalized Influenza\* by Age Group and Influenza Type Oct. 2, 2022 - Dec. 24, 2022



Laboratory-Based Surveillance for Influenza (%) Philadelphia, 2022/2023 Season\*



## Pennsylvania

As of December 31, 2022 The Pennsylvania Department of Health (PDH) has reported that flu activity is still high and is higher than past flu seasons for this time of year. However, flu activity continues to decrease. Emergency department visits for flu-like symptoms remain higher than usual for this time of year but have also started to decline. Influenza A (H3N2) viruses have been identified as the predominant type detected and overall there have been a total of 159,304 laboratory confirmed cases of influenza (positive by rapid test, PCR, or culture). There have been 47 influenza associated deaths this season. For more information, please visit: <https://www.health.pa.gov/topics/disease/Flu/Pages/2022-23-Flu.aspx>

## United States

As of December 31, 2022, the CDC reports that influenza activity is still high nationwide, but most areas are seeing consistent declines in activity. The cumulative hospitalization rate is higher than the rate observed in week 52 during every previous season since 2010-2011. Clinical laboratories have reported 14,207 influenza detections out of 93,589 specimens tested (15.0%), 99.1% of which tested positive for influenza A. Of influenza A viruses that have been subtyped, 70% have been H3N2 and 30% have been H1N1. Seventy four pediatric deaths have been recorded so far this season. In week 52, eight jurisdictions experienced moderate flu activity, while 39 had high or very high activity. For more information, please visit: <https://www.cdc.gov/flu/weekly/index.htm> \*The CDC has not updated influenza data for week 51

All institutional outbreaks and hospitalized and fatal cases of influenza are to be reported to PDPH.

Phone: (215) 685-6742 Fax: (215) 238-6947

Email: [ACD@phila.gov](mailto:ACD@phila.gov)

Reporting requirements and forms are posted online at [hip.phila.gov](http://hip.phila.gov)