



PHILLY FLU FINDINGS

Philadelphia Department of Public Health
Seasonal Influenza Surveillance Report

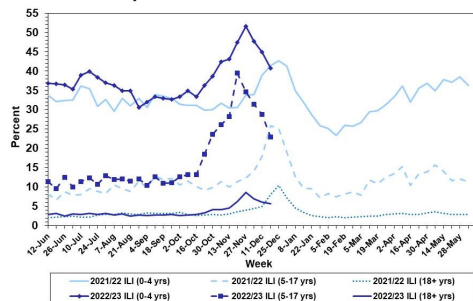
MMWR Week 51: December 18, 2022—December 24, 2022

Philadelphia Influenza Activity

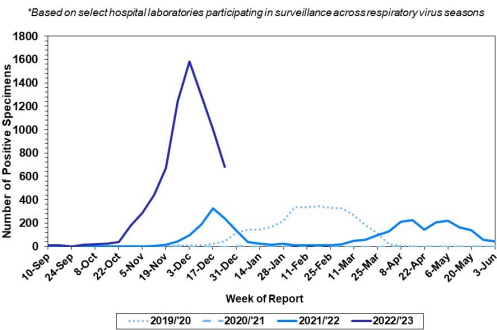
Please note these data are provisional and subject to change.

For week 51, influenza-like illness decreased across all age groups. Laboratory detections of influenza continued to decline as well, with influenza A still the predominant type detected. Since October 2, 2022, there have been 279 reports of severe influenza at non-pediatric hospitals (Philadelphia resident, positive by rapid test, PCR or culture, and hospitalized for ≥ 24 hrs). Data from pediatric hospitals is still pending, and will be updated once received. Eighteen influenza outbreaks have been reported (≥ 1 case of laboratory confirmed flu reported in a long term care facility) so far this season. Three deaths have been reported to date this season. *Week 51 data is based off of 5 out of the 6 hospitals normally reporting

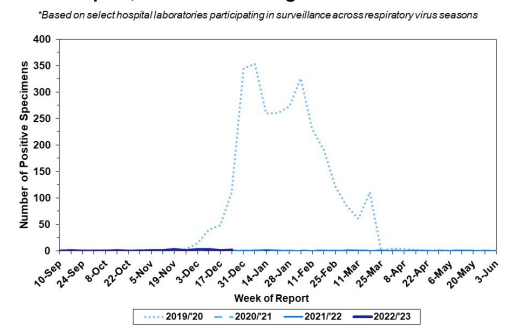
Febrile/Flu-like Illnesses at Philadelphia Emergency Departments, Current Season Compared with Previous Season



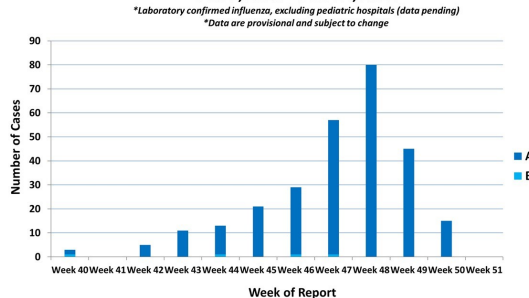
Laboratory-Based Surveillance for Influenza A Philadelphia, 2019/2020 through 2022/23 Seasons*



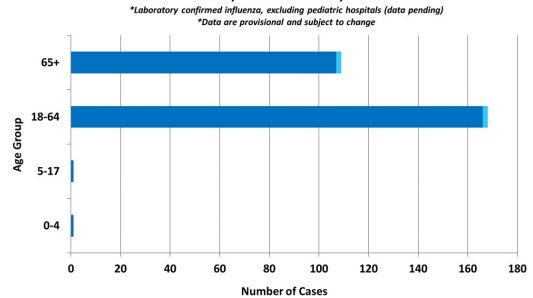
Laboratory-Based Surveillance for Influenza B Philadelphia, 2019/2020 through 2022/23 Seasons*



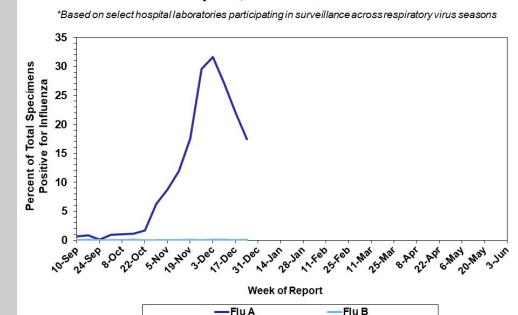
Weekly Counts of Hospitalizations by Influenza Type* Oct. 2, 2022 - Dec. 24, 2022



Hospitalized Influenza* by Age Group and Influenza Type Oct. 2, 2022 - Dec. 24, 2022



Laboratory-Based Surveillance for Influenza (%) Philadelphia, 2022/23 Season*



Pennsylvania

As of December 24, 2022 The Pennsylvania Department of Health (PDH) has reported that flu activity is still high and is higher than the past eight flu seasons at week 51. However, flu activity decreased slightly again in the past two weeks. Emergency department visits for flu-like symptoms remain higher than usual for this time of year. Influenza A (H3N2) viruses have been identified as the predominant type detected and overall there have been a total of 144,023 laboratory confirmed cases of influenza (positive by rapid test, PCR, or culture). There have been 36 influenza associated deaths this season. For more information, please visit: <https://www.health.pa.gov/topics/disease/Flu/Pages/2022-23-Flu.aspx>

United States

As of December 17, 2022, the CDC reports that influenza activity is still high nationwide, but most areas are seeing declines in activity. The cumulative hospitalization rate is higher than the rate observed in week 50 during every previous season since 2010-2011. Clinical laboratories have reported 33,202 influenza detections out of 135,848 specimens tested (24.4%), 99.5% of which tested positive for influenza A. Of influenza A viruses that have been subtyped, 77.8% have been H3N2 and 22.2% have been H1N1. Forty seven pediatric deaths have been recorded so far this season. In week 50, three jurisdictions experienced moderate flu activity, while 48 had high or very high activity. For more information, please visit: <https://www.cdc.gov/flu/weekly/index.htm> *The CDC has not updated influenza data for week 51

All institutional outbreaks and hospitalized and fatal cases of influenza are to be reported to PDPH.

Phone: (215) 685-6742 Fax: (215) 238-6947

Email: ACD@phila.gov

Reporting requirements and forms are posted online at hip.phila.gov