



# PHILLY FLU FINDINGS

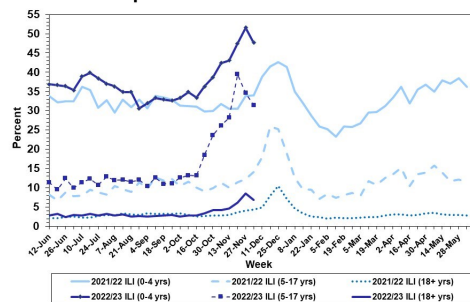
Philadelphia Department of Public Health  
Seasonal Influenza Surveillance Report  
MMWR Week 49: December 4, 2022—December 10, 2022

## Philadelphia Influenza Activity

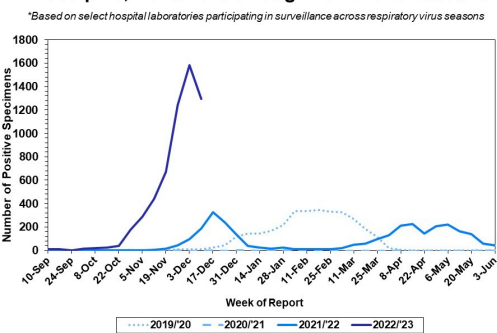
Please note these data are provisional and subject to change.

For week 49, influenza-like illness decreased across all age groups. Laboratory detections of influenza also declined during the same week. Influenza A still remained the predominant type detected. Since October 2, 2022, there have been 191 reports of severe influenza at non-pediatric hospitals (Philadelphia resident, positive by rapid test, PCR or culture, and hospitalized for  $\geq 24$  hrs). Data from pediatric hospitals is still pending, and will be updated once received. Thirteen influenza outbreaks have been reported ( $\geq 1$  case of laboratory confirmed flu reported in a long term care facility) so far this season. Two deaths have been reported to date this season.

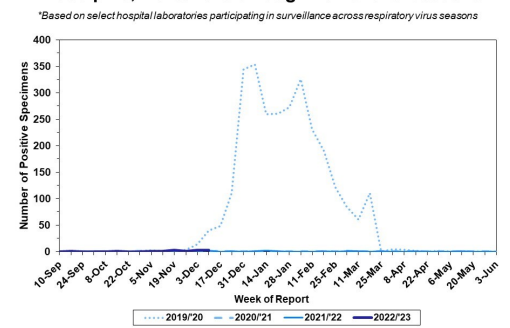
Febrile/Flu-like Illnesses at Philadelphia Emergency Departments, Current Season Compared with Previous Season



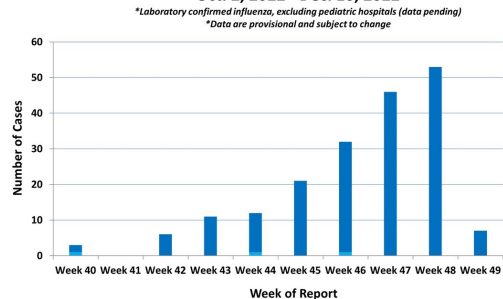
Laboratory-Based Surveillance for Influenza A Philadelphia, 2019/2020 through 2022/23 Seasons\*



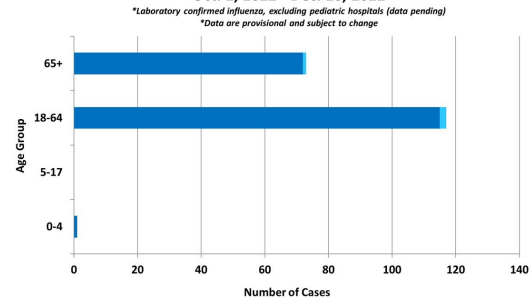
Laboratory-Based Surveillance for Influenza B Philadelphia, 2019/2020 through 2022/23 Seasons\*



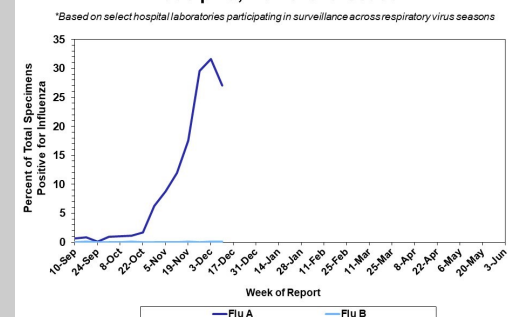
Weekly Counts of Hospitalizations by Influenza Type\* Oct. 2, 2022 - Dec. 10, 2022



Hospitalized Influenza\* by Age Group and Influenza Type Oct. 2, 2022 - Dec. 10, 2022



Laboratory-Based Surveillance for Influenza (%) Philadelphia, 2022/23 Season\*



## Pennsylvania

As of December 10, 2022 The Pennsylvania Department of Health (PDH) has reported that flu activity is still high and is higher than the past eight flu seasons at week 49. However, flu activity decreased slightly in week 49. Emergency department visits for flu-like symptoms are higher than usual for this time of year but also decreased slightly. Influenza A (H3N2) viruses have been identified as the predominant type detected. There have been a total of 100,204 laboratory confirmed cases of influenza (positive by rapid test, PCR, or culture). There have been twenty influenza associated deaths this season. For more information, please visit: <https://www.health.pa.gov/topics/disease/Flu/Pages/2022-23-Flu.aspx>

## United States

As of December 10, 2022, the CDC reports that influenza activity is still high nationwide, but some areas are starting to see declines in activity. The cumulative hospitalization rate is higher than the rate observed in week 49 during every previous season since 2010-2011. Clinical laboratories have reported 31,442 influenza detections out of 123,987 specimens tested (25.4%), 99.3% of which tested positive for influenza A. Of influenza A viruses that have been subtyped, 80% have been H3N2 and 20% have been H1N1. Thirty pediatric deaths have been recorded so far this season. In week 49, three jurisdictions experienced moderate flu activity, while 48 had high or very high activity. For more information, please visit: <https://www.cdc.gov/flu/weekly/index.htm>

All institutional outbreaks and hospitalized and fatal cases of influenza are to be reported to PDPH.

Phone: (215) 685-6742 Fax: (215) 238-6947 Email: [ACD@phila.gov](mailto:ACD@phila.gov) Reporting requirements and forms are posted online at [hip.phila.gov](http://hip.phila.gov)