



PHILLY FLU FINDINGS

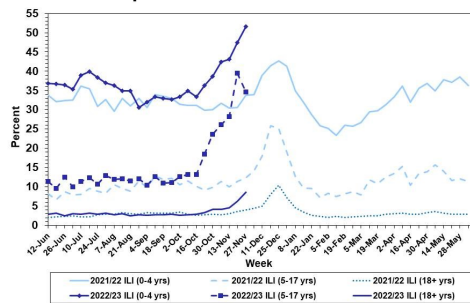
Philadelphia Department of Public Health
Seasonal Influenza Surveillance Report
MMWR Week 48: November 27, 2022—December 3, 2022

Philadelphia Influenza Activity

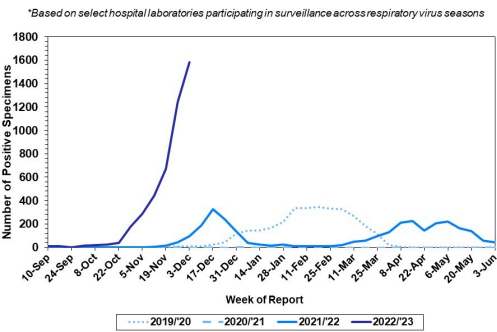
Please note these data are provisional and subject to change.

For week 48, influenza-like illness increased among children 0-4 years and adults. Detections of influenza, primarily influenza A, have once again risen sharply at local hospital laboratories. Since October 2, 2022, there have been 95 reports of severe influenza at non-pediatric hospitals (Philadelphia resident, positive by rapid test, PCR or culture, and hospitalized for ≥ 24 hrs). Data from pediatric hospitals is still pending, and will be updated once received. Thirteen influenza outbreaks have been reported (≥ 1 case of laboratory confirmed flu reported in a long term care facility) so far this season.

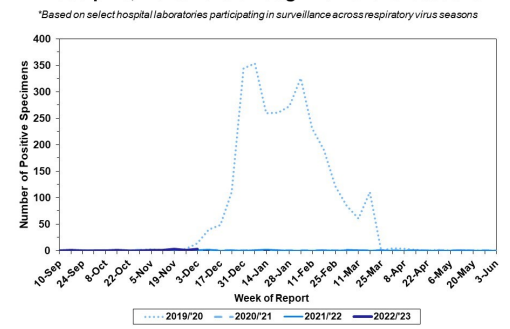
Febrile/Flu-like Illnesses at Philadelphia Emergency Departments, Current Season Compared with Previous Season



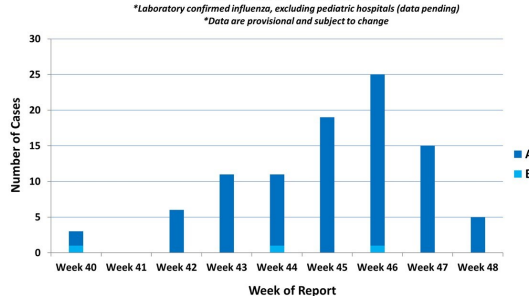
Laboratory-Based Surveillance for Influenza A Philadelphia, 2019/2020 through 2022/23 Seasons*



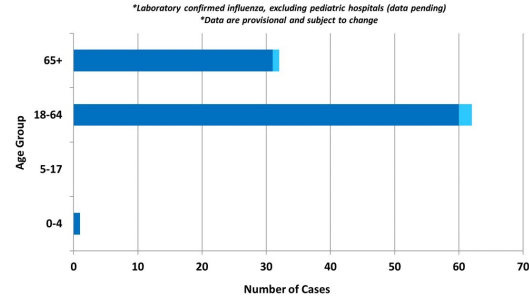
Laboratory-Based Surveillance for Influenza B Philadelphia, 2019/2020 through 2022/23 Seasons*



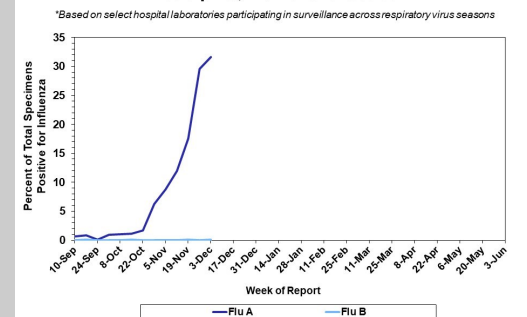
Weekly Counts of Hospitalizations by Influenza Type* Oct. 2, 2022 - Dec. 3, 2022



Hospitalized Influenza* by Age Group and Influenza Type Oct. 2, 2022 - Dec. 3, 2022



Laboratory-Based Surveillance for Influenza (%) Philadelphia, 2022/23 Season*



Pennsylvania

As of December 3, 2022 The Pennsylvania Department of Health (PDH) has reported that flu activity in the state is high and is higher than the past eight flu seasons at week 48. Emergency department visits for flu-like symptoms are higher than usual for this time of year. Influenza A (H3N2) viruses have been identified as the predominant type detected. There have been a total of 74,832 laboratory confirmed cases of influenza (positive by rapid test, PCR, or culture), with reports received from all 67 counties. There have been eight influenza associated deaths this season. For more information, please visit: <https://www.health.pa.gov/topics/disease/Flu/Pages/2022-23-Flu.aspx>

United States

As of December 3, 2022, the CDC reports that influenza activity is high nationwide. The cumulative hospitalization rate is higher than the rate observed in week 48 during every previous season since 2010-2011. Clinical laboratories have reported 35,704 influenza detections out of 143,924 specimens tested (24.8%), 99.6% of which tested positive for influenza A. Of influenza A viruses that have been subtyped, 76% have been H3N2 and 24% have been H1N1. Twenty one pediatric deaths have been recorded so far this season. In week 48, four jurisdictions experienced moderated flu activity, while 46 had high or very high activity. For more information, please visit: <https://www.cdc.gov/flu/weekly/index.htm>

All institutional outbreaks and hospitalized and fatal cases of influenza are to be reported to PDPH.

Phone: (215) 685-6742 Fax: (215) 238-6947 Email: ACD@phila.gov Reporting requirements and forms are posted online at hip.phila.gov