



PHILLY FLU FINDINGS

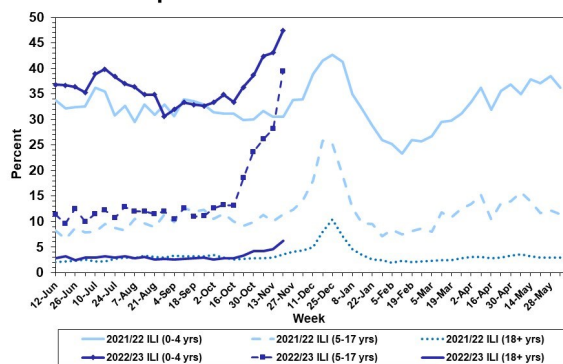
Philadelphia Department of Public Health
Seasonal Influenza Surveillance Report
MMWR Week 47: November 20, 2022—November 26, 2022

Philadelphia Influenza Activity

Please note these data are provisional and subject to change.

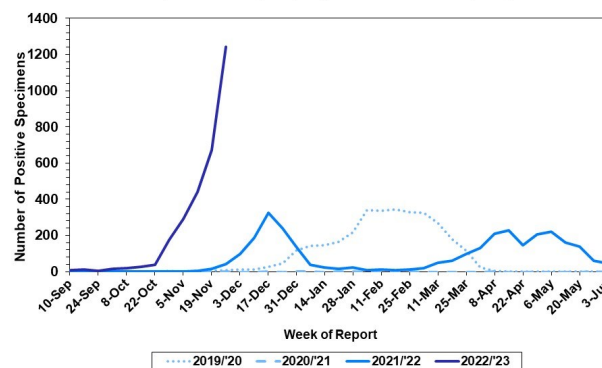
For week 47, influenza-like illness climbed across all age groups. In addition, detections of influenza, primarily influenza A, have continued to rise sharply at local hospital laboratories. Overall, the mid-Atlantic region is seeing very high influenza activity. Due to gaps in severe influenza case (Philadelphia resident, positive by rapid test, PCR or culture, and hospitalized for ≥ 24 hrs) reporting, data for severe cases is on hold and will be included in future reports. Seven influenza outbreaks have been reported (≥ 1 case of laboratory confirmed flu reported in a long term care facility) so far this season.

Febrile/Flu-like Illnesses at Philadelphia Emergency Departments, Current Season Compared with Previous Season



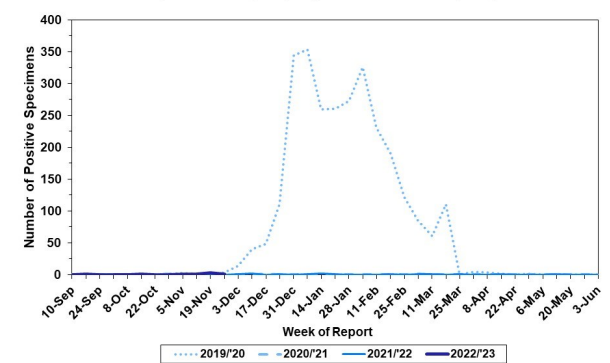
Laboratory-Based Surveillance for Influenza A Philadelphia, 2019/2020 through 2022/2023 Seasons*

*Based on select hospital laboratories participating in surveillance across respiratory virus seasons



Laboratory-Based Surveillance for Influenza B Philadelphia, 2019/2020 through 2022/2023 Seasons*

*Based on select hospital laboratories participating in surveillance across respiratory virus seasons



Pennsylvania

As of November 26, 2022 The Pennsylvania Department of Health (PDH) has reported that flu activity in the state is high and is higher than the past five flu seasons at week 47. Emergency department visits for flu-like symptoms are higher than usual for this time of year. Influenza A (H3N2) viruses have been identified as the predominant type detected. There have been a total of 48,948 laboratory confirmed cases of influenza (positive by rapid test, PCR, or culture), with reports received from all 67 counties. There have been seven influenza associated deaths this season. For more information, please visit: <https://www.health.pa.gov/topics/disease/Flu/Pages/2022-23-Flu.aspx>

United States

As of November 26, 2022, the CDC reports that influenza activity is high and continuing to increase nationwide. The cumulative hospitalization rate is higher than the rate observed in week 47 during every previous season since 2010-2011. Clinical laboratories have reported 32,733 influenza detections out of 130,584 specimens tested (25.1%), 99.1% of which tested positive for influenza A. Of influenza A viruses that have been subtyped, 79% have been H3N2 and 21% have been H1N1. Fourteen pediatric deaths have been recorded so far this season. In week 47, two jurisdictions experienced moderate flu activity, while 47 had high or very high activity. For more information, please visit: <https://www.cdc.gov/flu/weekly/index.htm>

All institutional outbreaks and hospitalized and fatal cases of influenza are to be reported to PDPH.

Phone: (215) 685-6742 Fax: (215) 238-6947 Email: ACD@phila.gov Reporting requirements and forms are posted online at hip.phila.gov