



PHILLY FLU FINDINGS

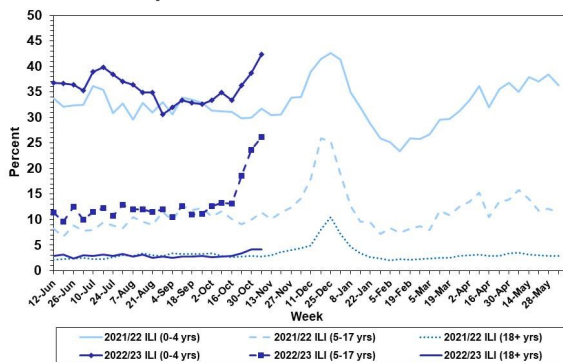
Philadelphia Department of Public Health
Seasonal Influenza Surveillance Report
MMWR Week 46: November 13, 2022—November 19, 2022

Philadelphia Influenza Activity

Please note these data are provisional and subject to change.

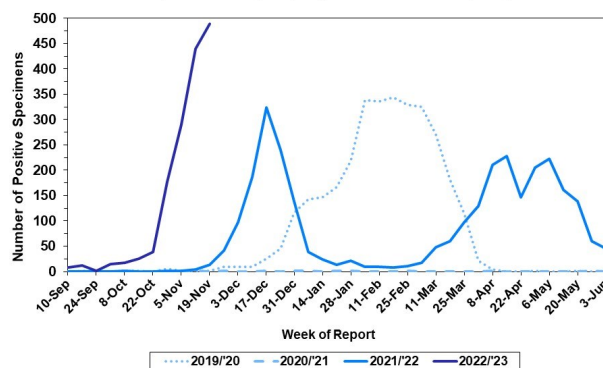
Please note: One sentinel hospital is pending data updates, as well as our influenza like illness data. Updates will be included in the next report. For week 46, detections of influenza, primarily influenza A, have continued to rise sharply at local hospital laboratories. Overall, the mid-Atlantic region is seeing moderate to high influenza activity. Due to gaps in severe influenza case (Philadelphia resident, positive by rapid test, PCR or culture, and hospitalized for ≥ 24 hrs) reporting, data for severe cases is on hold and will be included in future reports. Four influenza outbreaks have been reported (≥ 1 case of laboratory confirmed flu reported in a long term care facility) so far this season.

Febrile/Flu-like Illnesses at Philadelphia Emergency Departments, Current Season Compared with Previous Season



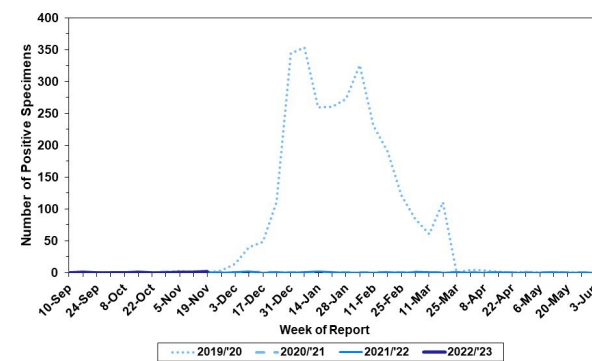
Laboratory-Based Surveillance for Influenza A Philadelphia, 2019/2020 through 2022/2023 Seasons*

*Based on select hospital laboratories participating in surveillance across respiratory virus seasons



Laboratory-Based Surveillance for Influenza B Philadelphia, 2019/2020 through 2022/2023 Seasons*

*Based on select hospital laboratories participating in surveillance across respiratory virus seasons



Pennsylvania

Please note that PADOH influenza data is on hold, and updates will begin again on November 30, 2022. As of November 5, 2022 The Pennsylvania Department of Health (PDOH) has reported that flu activity is high and is higher than the past five flu seasons at week 44. Emergency department visits with flu-like symptoms remains low. Influenza A (H3N2) viruses have been identified as the predominant type detected. There has been a total of 12,065 laboratory confirmed cases of influenza (positive by rapid test, PCR, or culture), these reports were received from 66 of the 67 counties. There have been two influenza associated deaths this season. For more information, please visit: <https://www.health.pa.gov/topics/disease/Flu/Pages/2022-23-Flu.aspx>

United States

As of November 19, 2022, the CDC reports that influenza activity remains elevated across the country. The cumulative hospitalization rate is higher than the rate observed in week 46 during every previous season since 2010-2011. Clinical laboratories have reported 21,796 influenza detections out of 119,615 specimens tested (18.2%), 98.9% of which tested positive for influenza A. Influenza A(H3N2) has been the predominant subtype; however, the proportion of influenza A(H1N1) is increasing. Twelve pediatric deaths have been recorded so far this season. For more information, please visit: <https://www.cdc.gov/flu/weekly/index.htm>

All institutional outbreaks and hospitalized and fatal cases of influenza are to be reported to PDPH.

Phone: (215) 685-6742 Fax: (215) 238-6947 Email: ACD@phila.gov Reporting requirements and forms are posted online at hip.phila.gov