



PHILLY FLU FINDINGS

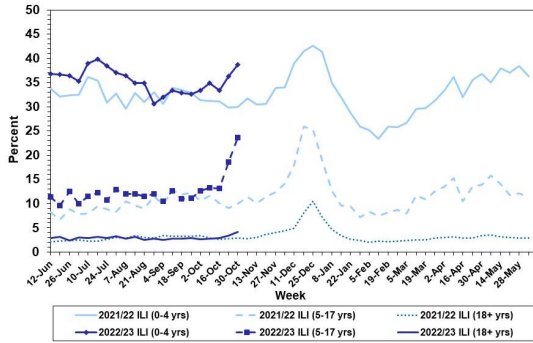
Philadelphia Department of Public Health
 Seasonal Influenza Surveillance Report
 MMWR Week 44: October 30, 2022—November 5, 2022

Philadelphia Influenza Activity

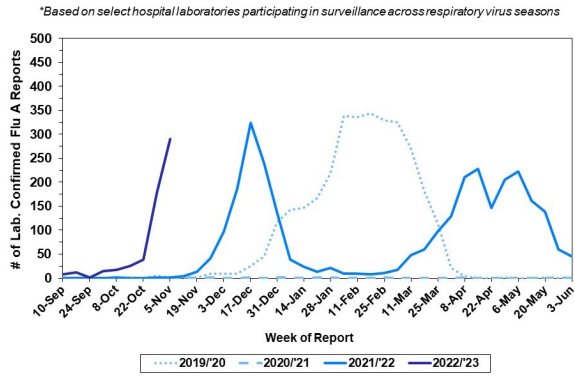
Please note these data are provisional and subject to change.

For week 44, influenza-like illnesses increased among all age groups, particularly among children and adolescents. Similarly, reports of positive detections of influenza at select local hospital laboratories have indicated a sharp rise in detections for influenza A. Since Oct 2, 2022, there have been 6 reports of severe influenza (Philadelphia resident, positive by rapid test, PCR or culture, and hospitalized for ≥ 24 hrs). One influenza outbreak has been reported (≥ 1 case of laboratory confirmed flu reported in a long term care facility) so far this season.

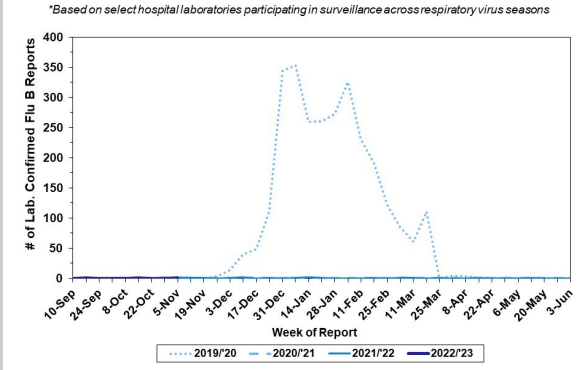
Febrile/Flu-like Illnesses at Philadelphia Emergency Departments, Current Season Compared with Previous Season



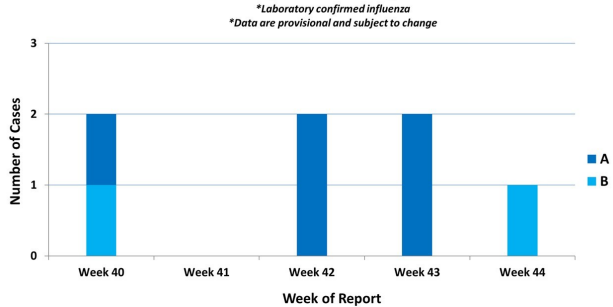
Laboratory-Based Surveillance for Influenza A Philadelphia, 2019/2020 through 2022/2023 Seasons*



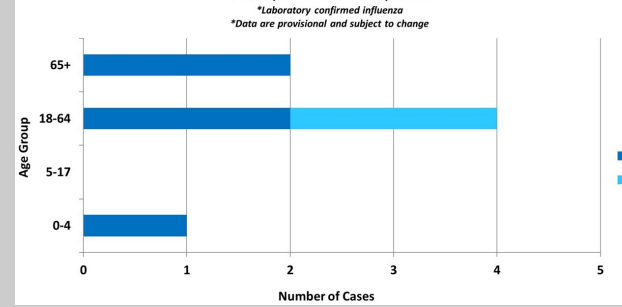
Laboratory-Based Surveillance for Influenza B Philadelphia, 2019/2020 through 2022/2023 Seasons*



Weekly Counts of Hospitalizations by Influenza Type* Oct. 2, 2022 - Nov. 5, 2022



Hospitalized Influenza* by Age Group and Influenza Type Oct. 2, 2022 - Nov. 5, 2022



Pennsylvania

As of November 4, 2022 The Pennsylvania Department of Health (PDOH) has reported that flu activity is high and is higher than the past five flu seasons at week 44. Emergency department visits with flu-like symptoms remains low. Influenza A (H3N2) viruses have been identified as the predominant type detected. There has been a total of 12,065 laboratory confirmed cases of influenza (positive by rapid test, PCR, or culture), these reports were received from 66 of the 67 counties. There have been two influenza associated deaths this season. For more information, please visit: <https://www.health.pa.gov/topics/disease/Flu/Pages/2022-23-Flu.aspx>

United States

As of November 4, 2022, the CDC reports that flu activity has increased, with most activity happening in the south-east and south-central parts of the country. The cumulative hospitalization rate is higher than the rate observed in week 44 during every previous season since 2010-2022. Clinical laboratories have reported out of 103,311 specimens tested 13,178 (12.8%) were positive, 99.3% of which tested positive for influenza A. Three pediatric deaths have been recorded this week. For more information, please visit: <https://www.cdc.gov/flu/weekly/index.htm>

All institutional outbreaks and hospitalized and fatal cases of influenza are to be reported to PDPH.

Phone: (215) 685-6742 Fax: (215) 238-6947 Email: ACD@phila.gov Reporting requirements and forms are posted online at hip.phila.gov