



# PHILLY FLU FINDINGS

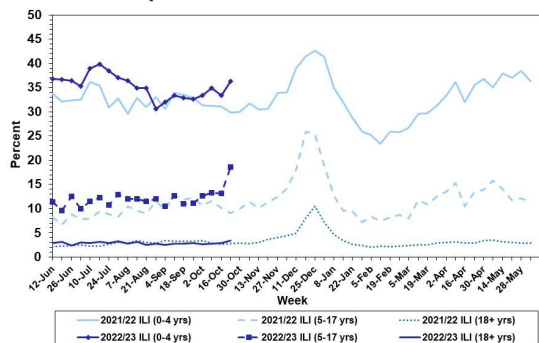
Philadelphia Department of Public Health  
Seasonal Influenza Surveillance Report  
MMWR Week 43: October 23, 2022—October 29, 2022

## Philadelphia Influenza Activity

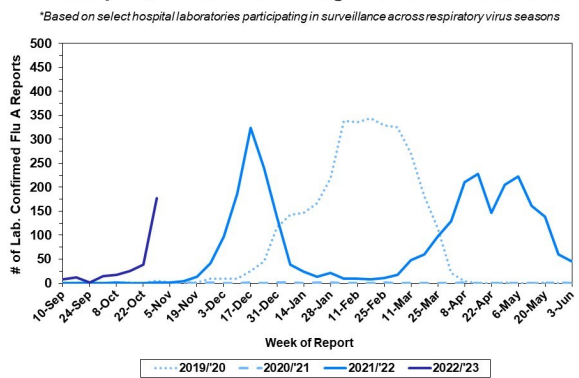
Please note these data are provisional and subject to change.

For week 43, influenza-like illnesses increased among all age groups, particularly among children and adolescents. Similarly, reports of positive detections of influenza at select local hospital laboratories have indicated a sharp rise in detections for influenza A. Since Oct 2, 2022, there have been 6 reports of severe influenza (Philadelphia resident, positive by rapid test, PCR or culture, and hospitalized for  $\geq 24$  hrs). One influenza outbreak has been reported ( $\geq 1$  case of laboratory confirmed flu reported in a long term care facility) so far this season.

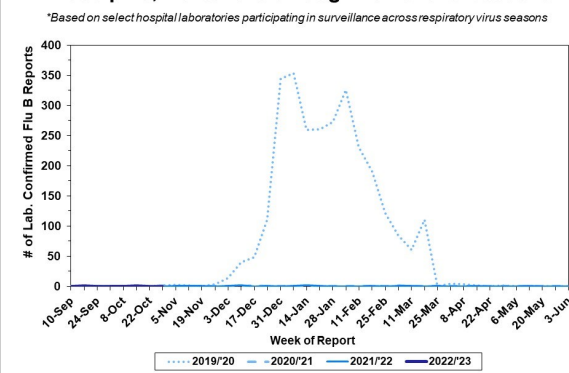
### Febrile/Flu-like Illnesses at Philadelphia Emergency Departments, Current Season Compared with Previous Season



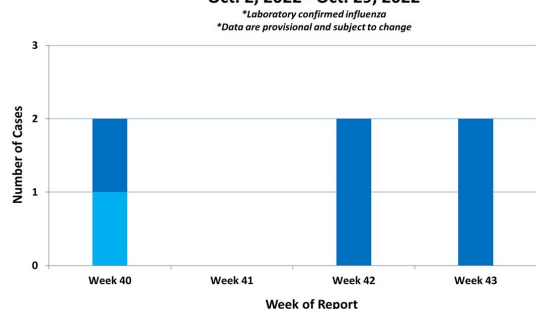
### Laboratory-Based Surveillance for Influenza A Philadelphia, 2019/2020 through 2022/2023 Seasons\*



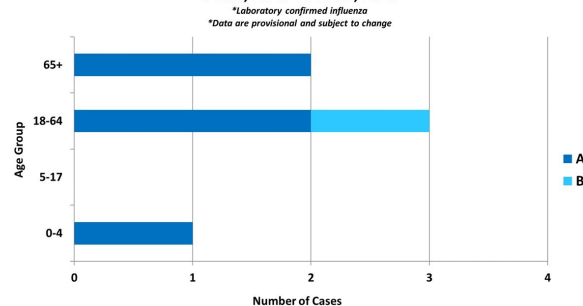
### Laboratory-Based Surveillance for Influenza B Philadelphia, 2019/2020 through 2022/2023 Seasons\*



### Weekly Counts of Hospitalizations by Influenza Type\* Oct. 2, 2022 - Oct. 29, 2022



### Hospitalized Influenza\* by Age Group and Influenza Type Oct. 2, 2022 - Oct. 29, 2022



## Pennsylvania

As of October 29, 2022, the Pennsylvania Department of Health (PDOH) has reported that flu activity remains low, however there is greater flu activity this year than the past five flu seasons. Emergency department visits with flu-like symptoms remains low. Influenza A (H3N2) viruses have been identified as the predominant type detected this season. Two influenza-associated deaths have been reported so far. There has been a total of 5,585 laboratory-confirmed influenza cases this season (positive by rapid test, PCR, or culture), with reports received from 64 out of 67 counties. For more information, please visit: <https://www.health.pa.gov/topics/disease/Flu/Pages/2022-23-Flu.aspx>

## United States

As of October 29, 2022, the CDC reports that flu activity has increased, with most activity happening in the south-east and south-central parts of the country. A novel influenza A virus was detected in New Mexico this past week. The cumulative hospitalization rate for week 43 has been recorded as the highest activity in the past five years. Clinical laboratories have reported 7,504 specimens (9.0%) of 83,742 tested, with 98.9% of those who tested positive having influenza A. A second pediatric death has been recorded for this flu season. For more information, please visit: <https://www.cdc.gov/flu/weekly/index.htm>

All institutional outbreaks and hospitalized and fatal cases of influenza are to be reported to PDPH.

Phone: (215) 685-6742 Fax: (215) 238-6947 Email: [ACD@phila.gov](mailto:ACD@phila.gov) Reporting requirements and forms are posted online at [hip.phila.gov](http://hip.phila.gov)