



# PHILLY FLU FINDINGS

Philadelphia Department of Public Health  
Seasonal Influenza Surveillance Report

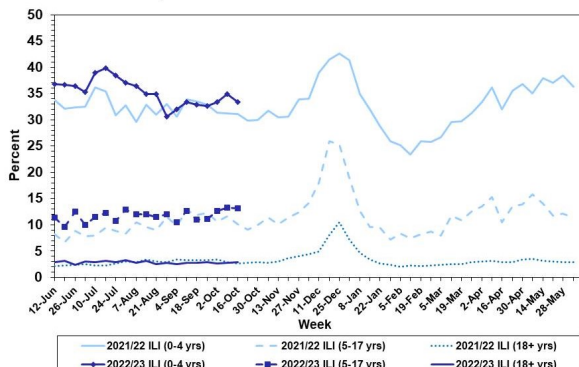
MMWR Week 42: October 16, 2022—October 22, 2022

## Philadelphia Influenza Activity

Please note these data are provisional and subject to change.

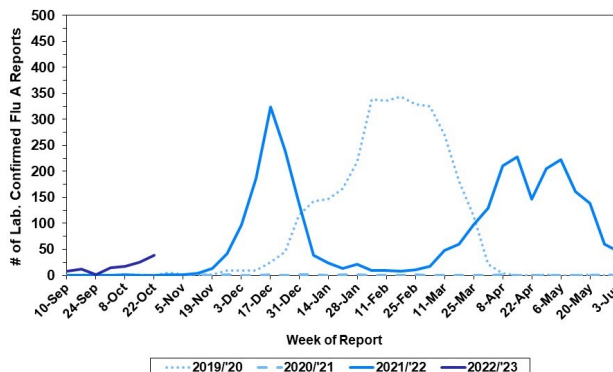
Over the last couple of weeks, influenza-like illnesses among pediatric ages have increased a bit higher than what was seen last season. Similarly, reports of positive detections of influenza at select local hospital laboratories have indicated a steady rise in detections for influenza A. Data on severe influenza (Philadelphia resident, positive by rapid test, PCR or culture, and hospitalized for  $\geq 24$  hrs) is forthcoming and will be released in a future flu report. One influenza outbreak has been reported ( $\geq 1$  case of laboratory confirmed flu reported in a long term care facility) so far this season.

### Febrile/Flu-like Illnesses at Philadelphia Emergency Departments, Current Season Compared with Previous Season



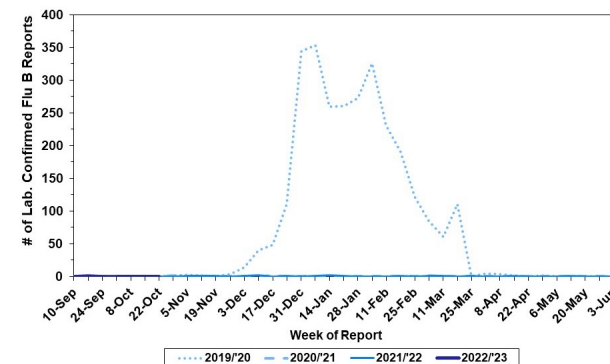
### Laboratory-Based Surveillance for Influenza A Philadelphia, 2019/2020 through 2022/2023 Seasons\*

\*Based on select hospital laboratories participating in surveillance across respiratory virus seasons



### Laboratory-Based Surveillance for Influenza B Philadelphia, 2019/2020 through 2022/2023 Seasons\*

\*Based on select hospital laboratories participating in surveillance across respiratory virus seasons



## Pennsylvania

As of October 22, 2022, the Pennsylvania Department of Health (PADOH) reported that flu activity was low so far this season, but that activity is higher than previous seasons for this time of year. Emergency department visits for influenza-like illness is also low. There has been a total of 2,480 laboratory confirmed cases of influenza reported (positive by rapid test, PCR, or culture), with reports received from 60 of 67 counties. Influenza A has been the predominant type detected this season. One death has been reported so far. For more information, please visit: <https://www.health.pa.gov/topics/disease/Flu/Pages/2022-23-Flu.aspx>

## United States

As of October 22, 2022, the CDC reports that seasonal influenza activity has increased early, with the southeast and south-central areas of the country experiencing the highest levels of activity. In week 42, clinical laboratories reported 4,129 specimens (6.2%) of 66,955 specimens tested positive for influenza, the majority of which have been influenza A. The cumulative hospitalization rate is higher than the rate for previous seasons for this time of year, while outpatient visits for influenza like illness has increased compared to the previous week. One jurisdiction reported moderate flu activity and 13 jurisdictions reported high levels of flu activity. For more information, please visit: <https://www.cdc.gov/flu/weekly/index.htm>

**All institutional outbreaks and hospitalized and fatal cases of influenza are to be reported to PDPH.**

Phone: (215) 685-6742 Fax: (215) 238-6947 Email: [ACD@phila.gov](mailto:ACD@phila.gov) Reporting requirements and forms are posted online at [hip.phila.gov](http://hip.phila.gov)