



PHILLY FLU FINDINGS

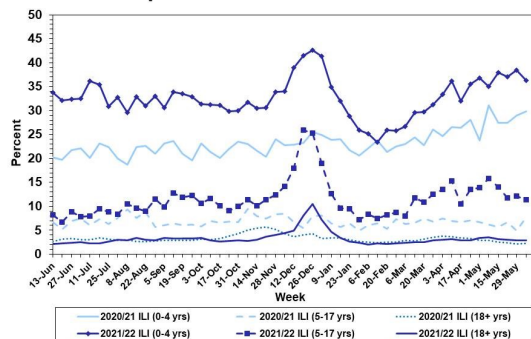
Philadelphia Department of Public Health
 Seasonal Influenza Surveillance Report
 MMWR Week 23: June 5, 2022—June 11, 2022

Philadelphia Influenza Activity

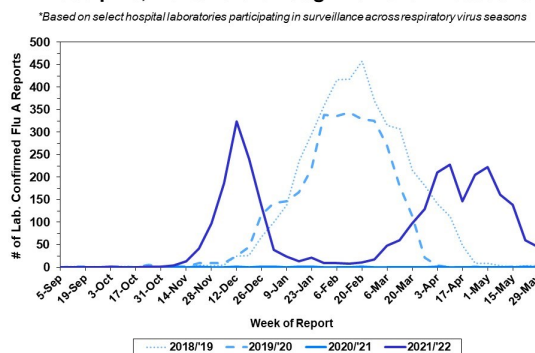
Please note these data are provisional and subject to change.

For week 23, flu-like illnesses at emergency departments decreased for pediatric and adolescents age groups. Additionally, 30 specimens were reported as positive for influenza A or B from our sentinel hospitals. Influenza activity has continued to decrease in the past few weeks, though activity remains higher than previous seasons. Since Oct 3, 2021, there have been 249 reports of severe influenza (Philadelphia resident, positive by rapid test, PCR or culture, and hospitalized for ≥ 24 hrs). Thirteen influenza outbreaks have been reported this season (≥ 1 case of lab confirmed flu reported in a long term care facility or other high-risk congregate setting). No influenza-associated death was reported for week 23, and five have been reported thus far this season.

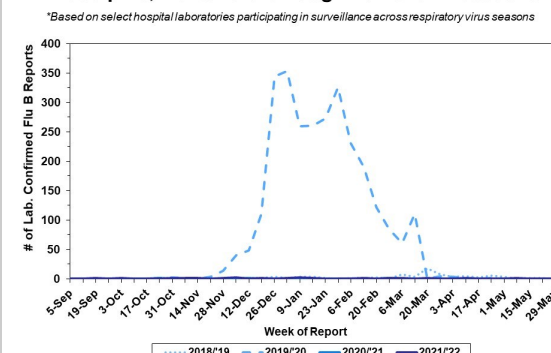
Febrile/Flu-like Illnesses at Philadelphia Emergency Departments, Current Season Compared with Previous Season



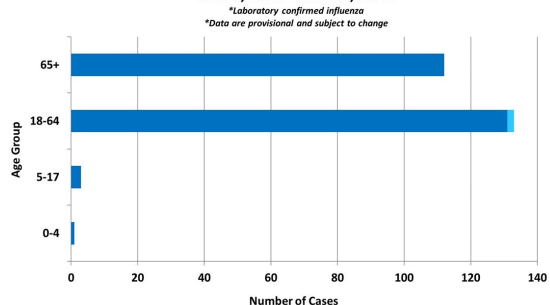
Laboratory-Based Surveillance for Influenza A Philadelphia, 2018/2019 through 2021/2022 Seasons*



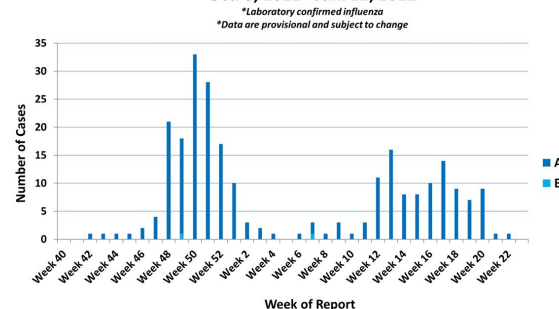
Laboratory-Based Surveillance for Influenza B Philadelphia, 2018/2019 through 2021/2022 Seasons*



Hospitalized Influenza* by Age Group and Influenza Type Oct. 3, 2021 - Jun. 11, 2022



Weekly Counts of Hospitalizations by Influenza Type* Oct. 3, 2021 - Jun. 11, 2022



Pennsylvania

As of June 11, 2022, the Pennsylvania Department of Health (PADOH) reported that flu activity decreased significantly, with low activity overall; however, activity is still higher than previous seasons for this time of year. There have been 85,266 laboratory confirmed cases of influenza (positive by rapid test, PCR, or culture) reported so far this season, with influenza A remaining as the predominant type. There have been confirmed reports from all 67 counties. Sixty five deaths have been reported so far this season. One pediatric death has been reported. For more information, please visit: <https://www.health.pa.gov/topics/disease/Flu/Pages/2021-22-Flu.aspx>

United States

As of June 11, 2022, the CDC reported that seasonal influenza was decreasing nationwide. In week 23, clinical laboratories reported 1,877 specimens (3.4%) of 55,572 specimens tested positive for influenza. The majority of virus detections have been influenza A(H3N2). Outpatient visits for respiratory illness declined in week 23. Hospitalizations for influenza also decreased, and overall have continued trending downwards. Three jurisdictions reported moderate activity and no jurisdictions reported very high influenza activity. For more information, please visit: <https://www.cdc.gov/flu/weekly/index.htm>

All institutional outbreaks and hospitalized and fatal cases of influenza are to be reported to PDPH.

Phone: (215) 685-6742 Fax: (215) 238-6947 Email: ACD@phila.gov Reporting requirements and forms are posted online at hip.phila.gov