



PHILLY FLU FINDINGS

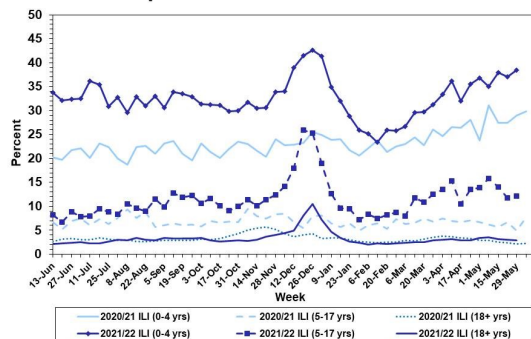
Philadelphia Department of Public Health
 Seasonal Influenza Surveillance Report
 MMWR Week 22: May 30, 2022—June 4, 2022

Philadelphia Influenza Activity

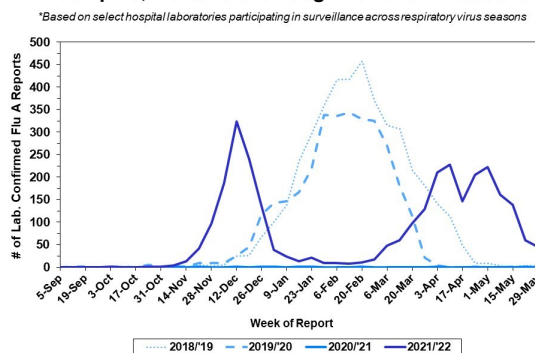
Please note these data are provisional and subject to change.

For week 22, flu-like illnesses at emergency departments increased for pediatric and adolescents age groups. Additionally, 45 specimens were reported as positive for influenza A or B from our sentinel hospitals. Influenza activity has continued to decrease in the past few weeks, though activity remains higher than previous seasons. Since Oct 3, 2021, there have been 248 reports of severe influenza (Philadelphia resident, positive by rapid test, PCR or culture, and hospitalized for ≥ 24 hrs). Thirteen influenza outbreaks have been reported this season (≥ 1 case of lab confirmed flu reported in a long term care facility or other high-risk congregate setting). No influenza-associated death was reported for week 22, and five have been reported thus far this season.

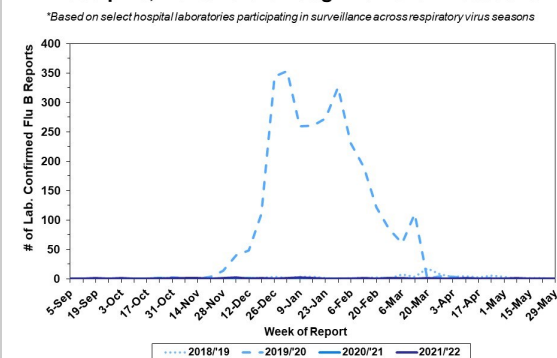
Febrile/Flu-like Illnesses at Philadelphia Emergency Departments, Current Season Compared with Previous Season



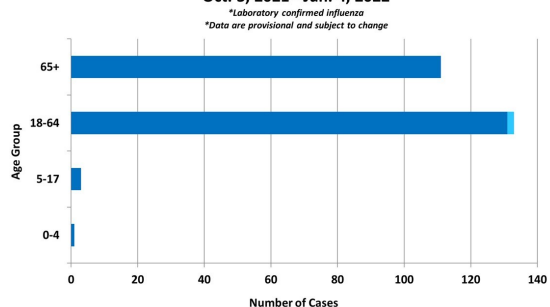
Laboratory-Based Surveillance for Influenza A Philadelphia, 2018/2019 through 2021/2022 Seasons*



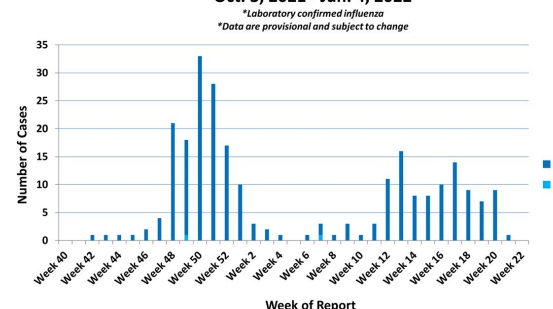
Laboratory-Based Surveillance for Influenza B Philadelphia, 2018/2019 through 2021/2022 Seasons*



Hospitalized Influenza* by Age Group and Influenza Type Oct. 3, 2021 - Jun. 4, 2022



Weekly Counts of Hospitalizations by Influenza Type* Oct. 3, 2021 - Jun. 4, 2022



Pennsylvania

As of June 4, 2022, the Pennsylvania Department of Health (PADOH) reported that flu activity decreased significantly, though activity overall is still higher than previous seasons for this time of year. There have been 84,666 laboratory confirmed cases of influenza (positive by rapid test, PCR, or culture) reported so far this season, with influenza A remaining as the predominant type. There have been confirmed reports from all 67 counties. Sixty five deaths have been reported so far this season. For more information, please visit: <https://www.health.pa.gov/topics/disease/Flu/Pages/2021-22-Flu.aspx>

United States

As of June 4, 2022, the CDC reported that seasonal influenza was still circulating and that activity is increasing in certain parts of the country. In week 22, clinical laboratories reported 3,365 specimens (5.9%) of 57,221 specimens tested positive for influenza. The majority of virus detections have been influenza A(H3N2). Outpatient visits for respiratory illness declined in week 22. Hospitalizations for influenza were stable, and overall are trending downwards. Two jurisdictions reported moderate activity and two jurisdictions reported very high influenza activity. For more information, please visit: <https://www.cdc.gov/flu/weekly/index.htm>

All institutional outbreaks and hospitalized and fatal cases of influenza are to be reported to PDPH.

Phone: (215) 685-6742 Fax: (215) 238-6947 Email: ACD@phila.gov Reporting requirements and forms are posted online at hip.phila.gov