



PHILLY FLU FINDINGS

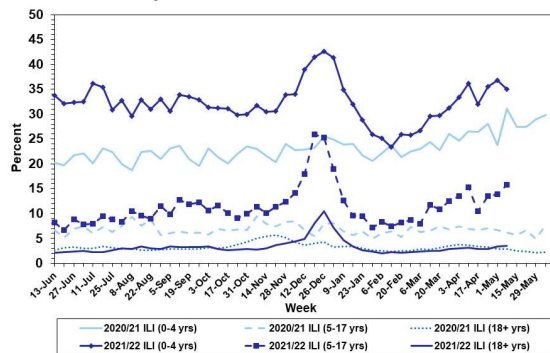
Philadelphia Department of Public Health
 Seasonal Influenza Surveillance Report
 MMWR Week 19: May 9, 2022—May 14, 2022

Philadelphia Influenza Activity

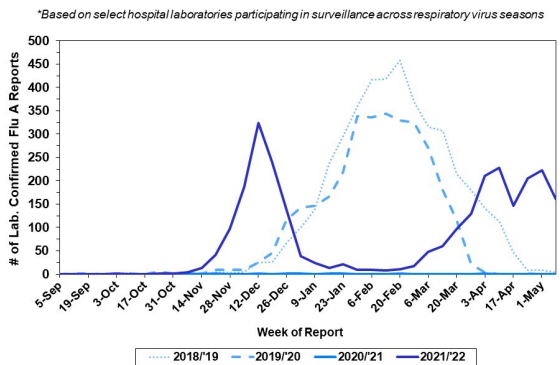
Please note these data are provisional and subject to change.

For week 19, flu-like illnesses at emergency departments increased for adolescents and adult age groups. Additionally, 162 specimens were reported as positive for influenza A or B from our sentinel hospitals. Influenza activity decreased in week 19, though activity remains high for this time of year. Since Oct 3, 2021, there have been 227 reports of severe influenza (Philadelphia resident, positive by rapid test, PCR or culture, and hospitalized for ≥ 24 hrs). Thirteen influenza outbreaks have been reported this season (≥ 1 case of lab confirmed flu reported in a long term care facility or other high-risk congregate setting). No influenza-associated death was reported for week 19, and four have been reported thus far this season.

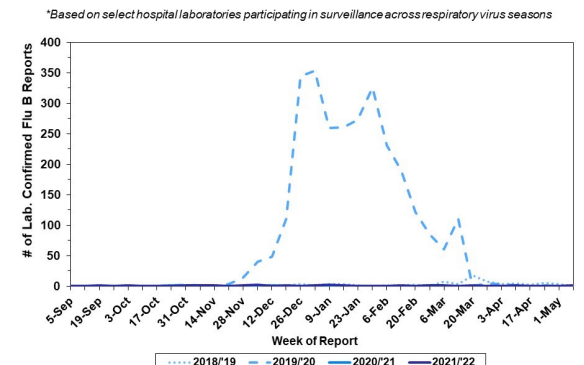
Febrile/Flu-like Illnesses at Philadelphia Emergency Departments, Current Season Compared with Previous Season



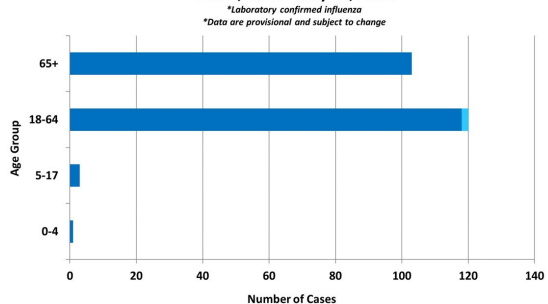
Laboratory-Based Surveillance for Influenza A Philadelphia, 2018/2019 through 2021/2022 Seasons*



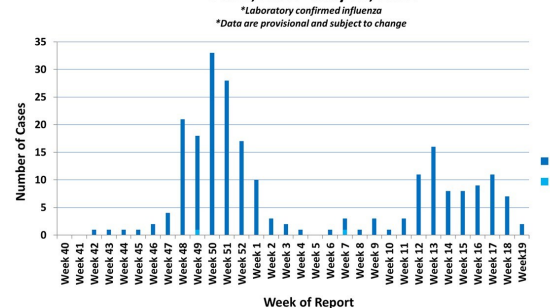
Laboratory-Based Surveillance for Influenza B Philadelphia, 2018/2019 through 2021/2022 Seasons*



Hospitalized Influenza* by Age Group and Influenza Type Oct. 3, 2021 - May 14, 2022



Weekly Counts of Hospitalizations by Influenza Type* Oct. 3, 2021 - May 14, 2022



Pennsylvania

As of May 14, 2022, the Pennsylvania Department of Health (PADOH) reported that flu activity decreased slightly again this week, with activity overall remaining higher than previous seasons for this time of year. There have been 78,892 laboratory confirmed cases of influenza (positive by rapid test, PCR, or culture) reported so far this season, with influenza A remaining as the predominant type. There have been confirmed reports from all 67 counties. Sixty two deaths have been reported so far this season. For more information, please visit: <https://www.health.pa.gov/topics/disease/Flu/Pages/2021-22-Flu.aspx>

United States

As of May 14, 2022, the CDC reported that seasonal influenza activity was still increasing in certain parts of the country, with circulation continuing across the country. In week 19, clinical laboratories reported 4,418 specimens (7.0%) of 62,961 specimens tested positive for influenza. The majority of virus detections have been influenza A(H3N2). Outpatient visits for respiratory illness were stable in week 19, and remain below the national baseline. However, outpatient visits are trending upwards, and hospitalizations for influenza increased slightly. Seven jurisdiction reported moderate activity and three jurisdictions reported high influenza activity. For more information, please visit: <https://www.cdc.gov/flu/weekly/index.htm>

All institutional outbreaks and hospitalized and fatal cases of influenza are to be reported to PDPH.

Phone: (215) 685-6742 Fax: (215) 238-6947 Email: ACD@phila.gov Reporting requirements and forms are posted online at hip.phila.gov