



PHILLY FLU FINDINGS

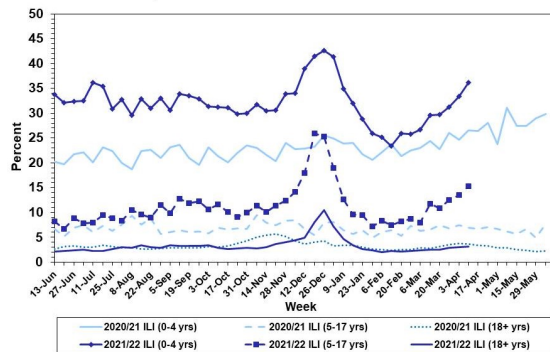
Philadelphia Department of Public Health
 Seasonal Influenza Surveillance Report
 MMWR Week 15: Apr. 10, 2022—Apr. 16, 2022

Philadelphia Influenza Activity

Please note these data are provisional and subject to change.

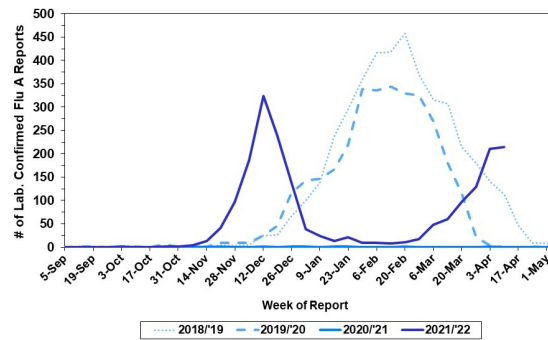
For week 15, flu-like illnesses at emergency departments increased for all age groups. Additionally, 214 specimens were reported as positive for influenza A or B from our sentinel hospitals. Influenza activity continues to increase, though activity has slowed compared to previous weeks. Since Oct 3, 2021, there have been 183 reports of severe influenza (Philadelphia resident, positive by rapid test, PCR or culture, and hospitalized for ≥ 24 hrs). Ten influenza outbreaks have been reported this season (≥ 1 case of lab confirmed flu reported in a long term care facility or other high-risk congregate setting). No influenza-associated death was reported for week 15, and three have been reported thus far this season.

Febrile/Flu-like Illnesses at Philadelphia Emergency Departments, Current Season Compared with Previous Season



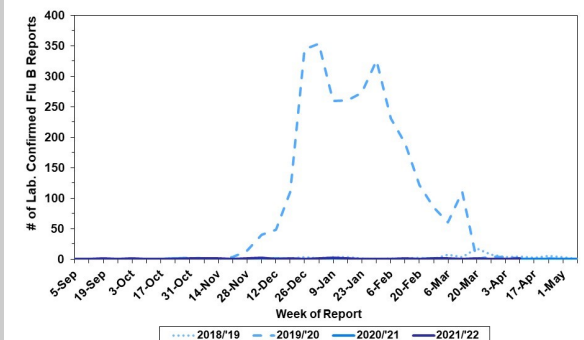
Laboratory-Based Surveillance for Influenza A Philadelphia, 2018/2019 through 2021/2022 Seasons*

*Based on select hospital laboratories participating in surveillance across respiratory virus seasons



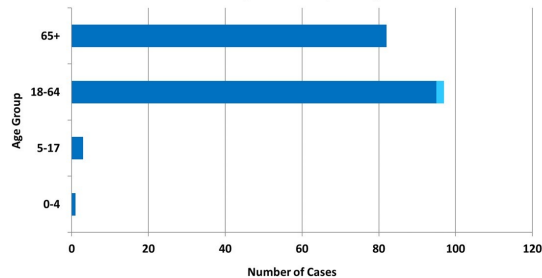
Laboratory-Based Surveillance for Influenza B Philadelphia, 2018/2019 through 2021/2022 Seasons*

*Based on select hospital laboratories participating in surveillance across respiratory virus seasons



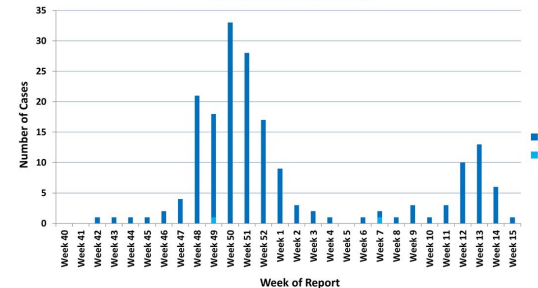
Hospitalized Influenza* by Age Group and Influenza Type Oct. 3, 2021 - Apr. 16, 2022

*Laboratory confirmed influenza
 *Data are provisional and subject to change



Weekly Counts of Hospitalizations by Influenza Type* Oct. 3, 2021 - Apr. 16, 2022

*Laboratory confirmed influenza
 *Data are provisional and subject to change



Pennsylvania

As of April 16, 2022, the Pennsylvania Department of Health (PADOH) reported that flu activity decreased slightly this week, with moderate activity overall. There have been 66,143 laboratory confirmed cases of influenza (positive by rapid test, PCR, or culture) reported so far this season, with influenza A remaining as the predominant type. There have been confirmed reports from all 67 counties. Fifty five deaths have been reported so far this season. For more information, please visit: <https://www.health.pa.gov/topics/disease/Flu/Pages/2021-22-Flu.aspx>

United States

Please note CDC's week 15 update is pending. As of April 9, 2022, the CDC reported that seasonal influenza activity was still increasing across the country. In week 14, clinical laboratories reported 3,902 specimens (8.4%) of 46,198 specimens tested positive for influenza. The majority of virus detections have been influenza A(H3N2). Outpatient visits for respiratory illness increased slightly in week 14, and remain below the national baseline. However, hospitalizations for influenza have continued to increase. Three jurisdictions reported moderate activity and one jurisdiction reported high influenza activity. For more information, please visit: <https://www.cdc.gov/flu/weekly/index.htm>

All institutional outbreaks and hospitalized and fatal cases of influenza are to be reported to PDPH.

Phone: (215) 685-6742 Fax: (215) 238-6947 Email: ACD@phila.gov Reporting requirements and forms are posted online at hip.phila.gov