



PHILLY FLU FINDINGS

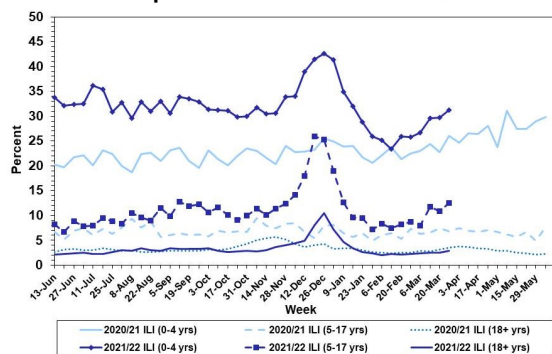
Philadelphia Department of Public Health
 Seasonal Influenza Surveillance Report
 MMWR Week 13: Mar. 27, 2022—Apr. 2, 2022

Philadelphia Influenza Activity

Please note these data are provisional and subject to change.

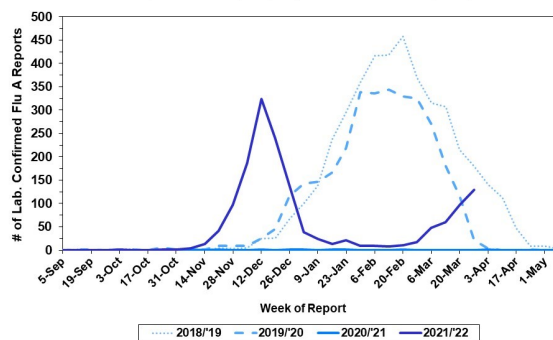
For week 13, flu-like illnesses at emergency departments increased for all age groups. Additionally, 129 specimens were reported as positive for influenza A or B from 5 of 6 sentinel hospitals, another increase from the previous week. Since Oct 3, 2021, there have been 144 reports of severe influenza (Philadelphia resident, positive by rapid test, PCR or culture, and hospitalized for ≥ 24 hrs). Ten influenza outbreaks have been reported this season (≥ 1 case of lab confirmed flu reported in a long term care facility or other high-risk congregate setting). No influenza-associated death was reported for week 13, and three have been reported thus far this season.

Febrile/Flu-like Illnesses at Philadelphia Emergency Departments, Current Season Compared with Previous Season



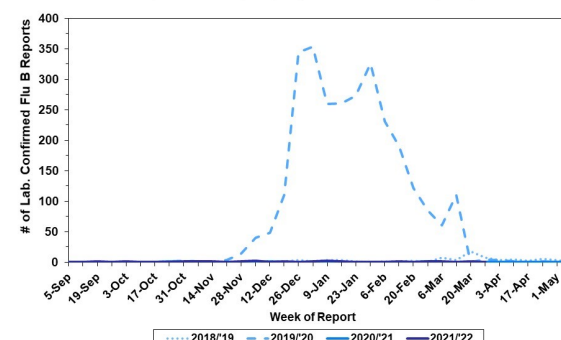
Laboratory-Based Surveillance for Influenza A Philadelphia, 2018/2019 through 2021/2022 Seasons*

*Based on select hospital laboratories participating in surveillance across respiratory virus seasons



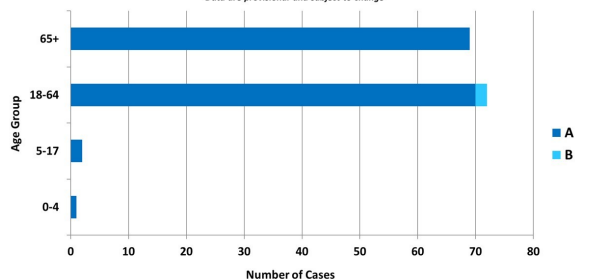
Laboratory-Based Surveillance for Influenza B Philadelphia, 2018/2019 through 2021/2022 Seasons*

*Based on select hospital laboratories participating in surveillance across respiratory virus seasons



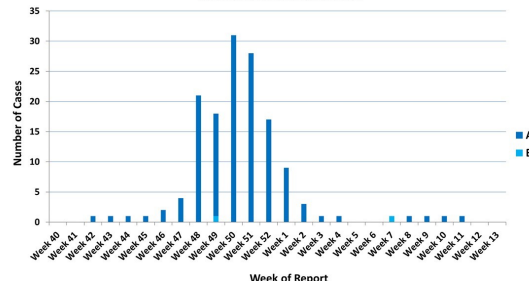
Hospitalized Influenza* by Age Group and Influenza Type Oct. 3, 2021 - Apr. 02, 2022

*Laboratory confirmed influenza
 *Data are provisional and subject to change



Weekly Counts of Hospitalizations by Influenza Type* Oct. 3, 2021 - Apr. 02, 2022

*Laboratory confirmed influenza
 *Data are provisional and subject to change



Pennsylvania

As of April 2, 2022, the Pennsylvania Department of Health (PADOH) reported that flu activity continued to increase this week, with moderate activity overall. There have been 55,061 laboratory confirmed cases of influenza (positive by rapid test, PCR, or culture) reported so far this season, with influenza A remaining as the predominant type. There have been confirmed reports from all 67 counties. Fifty one deaths have been reported so far this season. For more information, please visit: <https://www.health.pa.gov/topics/disease/Flu/Pages/2021-22-Flu.aspx>

United States

Please note CDC's week 13 update is pending. As of March 26, 2022, the CDC reported that seasonal influenza activity was still increasing in the NE and NW regions of the country. In week 12, clinical laboratories reported 2,947 specimens (6.5%) of 45,280 specimens tested positive for influenza. The majority of virus detections have been influenza A(H3N2). Outpatient visits for respiratory illness were stable in week 12, and remain below the national baseline. However, hospitalizations for influenza have continued to increase. Four jurisdictions reported moderate activity and one jurisdiction reported high influenza activity. For more information, please visit: <https://www.cdc.gov/flu/weekly/index.htm>

All institutional outbreaks and hospitalized and fatal cases of influenza are to be reported to PDPH.

Phone: (215) 685-6742 Fax: (215) 238-6947 Email: ACD@phila.gov Reporting requirements and forms are posted online at hip.phila.gov