



# PHILLY FLU FINDINGS

Philadelphia Department of Public Health  
Seasonal Influenza Surveillance Report

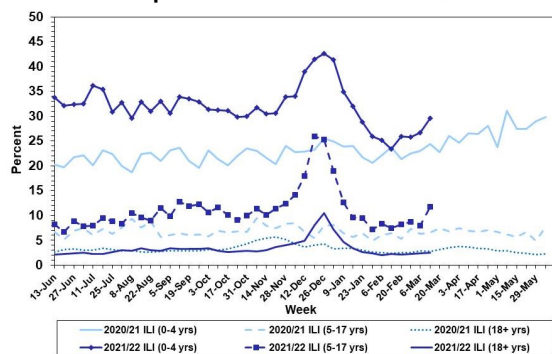
MMWR Week 11: Mar. 13, 2022—Mar. 19, 2022

## Philadelphia Influenza Activity

Please note these data are provisional and subject to change.

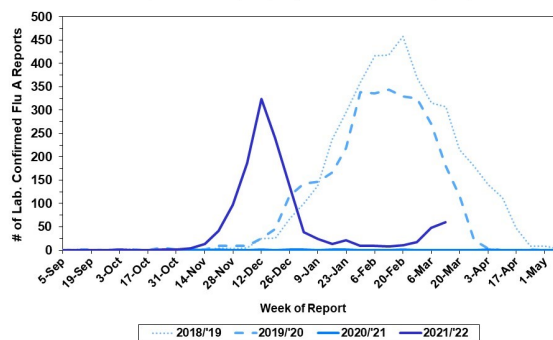
For week 11, flu-like illnesses at emergency departments increased for all age groups. Additionally, 60 specimens were reported as positive for influenza A or B from our 6 sentinel hospitals, another increase from the previous week. Since Oct 3, 2021, there have been 141 reports of severe influenza (Philadelphia resident, positive by rapid test, PCR or culture, and hospitalized for  $\geq 24$  hrs). Ten influenza outbreaks have been reported this season ( $\geq 1$  case of lab. confirmed flu reported in a long term care facility or other high-risk congregate setting). No influenza-associated death was reported for week 11, and three have been reported thus far this season.

**Febrile/Flu-like Illnesses at Philadelphia Emergency Departments, Current Season Compared with Previous Season**



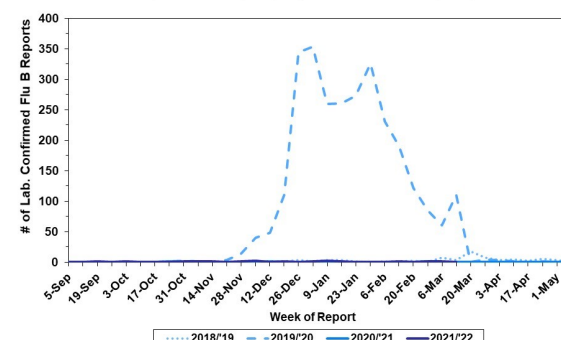
**Laboratory-Based Surveillance for Influenza A Philadelphia, 2018/2019 through 2021/2022 Seasons\***

\*Based on select hospital laboratories participating in surveillance across respiratory virus seasons



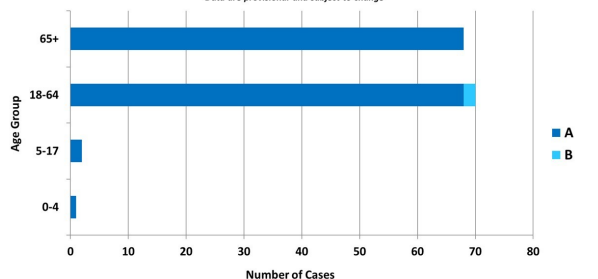
**Laboratory-Based Surveillance for Influenza B Philadelphia, 2018/2019 through 2021/2022 Seasons\***

\*Based on select hospital laboratories participating in surveillance across respiratory virus seasons



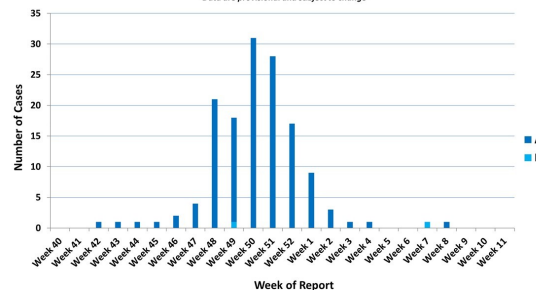
**Hospitalized Influenza\* by Age Group and Influenza Type Oct. 3, 2021 - Mar. 19, 2022**

\*Laboratory confirmed influenza  
\*Data are provisional and subject to change



**Weekly Counts of Hospitalizations by Influenza Type\***

Oct. 3, 2021 - Mar. 19, 2022  
\*Laboratory confirmed influenza  
\*Data are provisional and subject to change



## Pennsylvania

As of March 19, 2022, the Pennsylvania Department of Health (PADOH) reported that flu activity continued to increase this week, with moderate activity overall. There have been 47,309 laboratory confirmed cases of influenza (positive by rapid test, PCR, or culture) reported so far this season, with influenza A remaining as the predominant type. There have been confirmed reports from all 67 counties. Forty nine deaths have been reported so far this season. For more information, please visit: <https://www.health.pa.gov/topics/disease/Flu/Pages/2021-22-Flu.aspx>

## United States

As of March 19, 2022, the CDC reported that seasonal influenza activity was increasing across most of the country. In week 11, clinical laboratories reported 3,248 specimens (7.7%) of 43,370 specimens tested positive for influenza, an increase from the previous week. The majority of virus detections have been influenza A(H3N2). Outpatient visits for respiratory illness increased slightly this week, but remains below the national baseline. However, hospitalizations for influenza have continued to increase. This week, there were seven jurisdictions reporting moderate activity and one jurisdiction that reported high influenza activity. For more information, please visit: <https://www.cdc.gov/flu/weekly/index.htm>

**All institutional outbreaks and hospitalized and fatal cases of influenza are to be reported to PDPH.**

Phone: (215) 685-6742 Fax: (215) 238-6947 Email: [ACD@phila.gov](mailto:ACD@phila.gov) Reporting requirements and forms are posted online at [hip.phila.gov](http://hip.phila.gov)