



PHILLY FLU FINDINGS

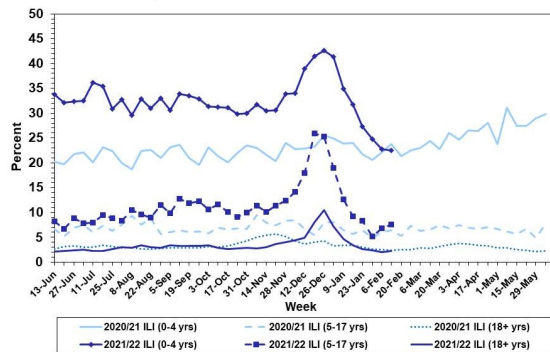
Philadelphia Department of Public Health
 Seasonal Influenza Surveillance Report
 MMWR Week 7: Feb. 13, 2022—Feb. 19, 2022

Philadelphia Influenza Activity

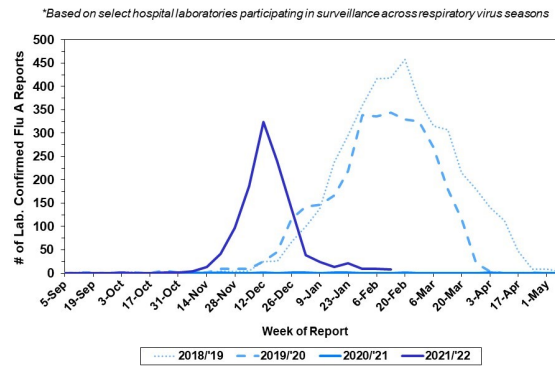
Please note these data are provisional and subject to change.

For week 7, flu-like illnesses at emergency departments declined for children 0-4 years, but increased slightly for those 5-17 years and adults. Additionally, 9 specimens were reported as positive for influenza A or B from our 6 sentinel hospitals, a decrease from the previous week. Since Oct 3, 2021, there have been 140 reports of severe influenza (Philadelphia resident, positive by rapid test, PCR or culture, and hospitalized for ≥ 24 hrs). Nine influenza outbreaks have been reported this season (≥ 1 case of lab. confirmed flu reported in a long term care facility or other high-risk congregate setting). No influenza-associated death was reported for week 7, and two have been reported thus far this season.

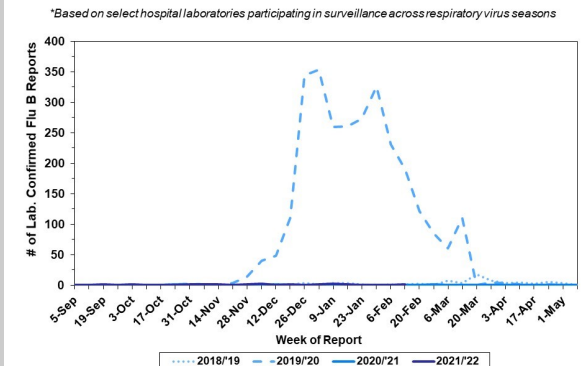
Febrile/Flu-like Illnesses at Philadelphia Emergency Departments, Current Season Compared with Previous Season



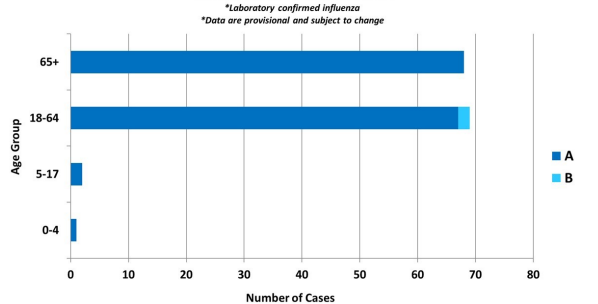
Laboratory-Based Surveillance for Influenza A Philadelphia, 2018/2019 through 2021/2022 Seasons*



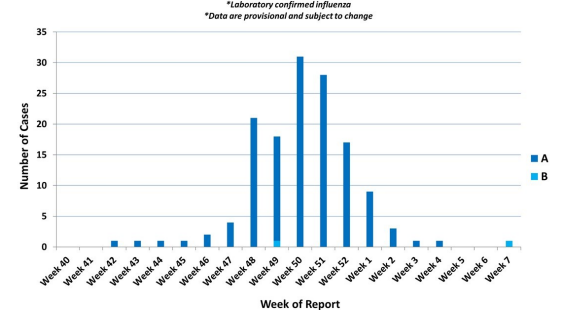
Laboratory-Based Surveillance for Influenza B Philadelphia, 2018/2019 through 2021/2022 Seasons*



Hospitalized Influenza* by Age Group and Influenza Type Oct. 3, 2021 - Feb. 19, 2022



Weekly Counts of Hospitalizations by Influenza Type* Oct. 3, 2021 - Feb. 19, 2022



Pennsylvania

As of February 19, 2022, the Pennsylvania Department of Health (PADOH) reported that flu activity increased slightly this week, with moderate activity overall. There have been 35,703 laboratory confirmed cases of influenza (positive by rapid test, PCR, or culture) reported so far this season, with influenza A remaining as the predominant type. There have been confirmed reports from all 67 counties. Thirty five deaths have been reported so far this season. For more information, please visit: <https://www.health.pa.gov/topics/disease/Flu/Pages/2021-22-Flu.aspx>

United States

As of February 19, 2022, the CDC reported that seasonal influenza activity was sporadic across the country, though activity is increasing in some areas. In week 7, clinical laboratories reported 1,807 specimens (4.2%) of 43,078 specimens tested positive for influenza, an increase from the previous week. The majority of virus detections have been influenza A. Outpatient visits for respiratory illness were stable this week, and is below the national baseline. However, hospitalizations for influenza have continued to increase. This week, there were two jurisdictions reporting moderate activity, though no jurisdictions reported high influenza activity. For more information, please visit: <https://www.cdc.gov/flu/weekly/index.htm>

All institutional outbreaks and hospitalized and fatal cases of influenza are to be reported to PDPH.

Phone: (215) 685-6742 Fax: (215) 238-6947 Email: ACD@phila.gov Reporting requirements and forms are posted online at hip.phila.gov