



# PHILLY FLU FINDINGS

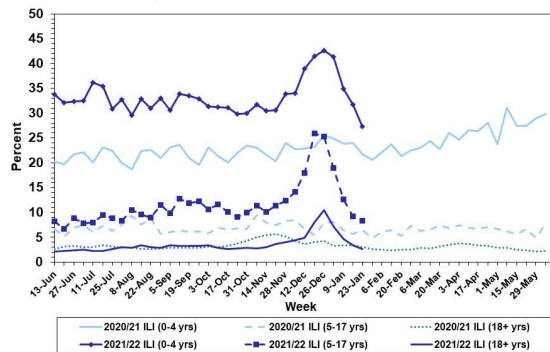
Philadelphia Department of Public Health  
 Seasonal Influenza Surveillance Report  
 MMWR Week 4: Jan 23 2022—Jan. 29, 2022

## Philadelphia Influenza Activity

Please note these data are provisional and subject to change.

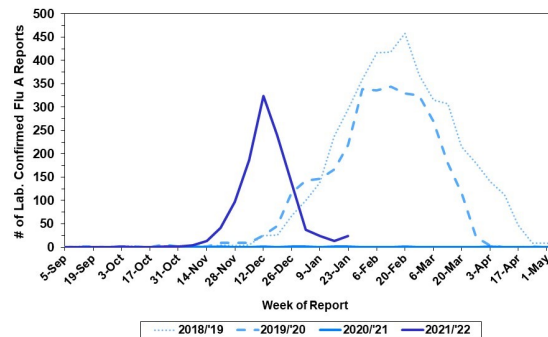
Febrile/flu-like illnesses at emergency departments declined for all age groups during week 4. Additionally, 24 specimens were reported as positive for influenza A or B from our 6 sentinel hospitals, a slight increase from the previous week. Since Oct 3, 2021, there have been 136 reports of severe influenza (Philadelphia resident, positive by rapid test, PCR or culture, and hospitalized for  $\geq 24$  hrs). Eight influenza outbreaks have been reported this season ( $\geq 1$  case of laboratory confirmed flu reported in a long term care facility or other high-risk congregate setting). No influenza-associated death was reported for week 4, and two have been reported thus far this season.

**Febrile/Flu-like Illnesses at Philadelphia Emergency Departments, Current Season Compared with Previous Season**



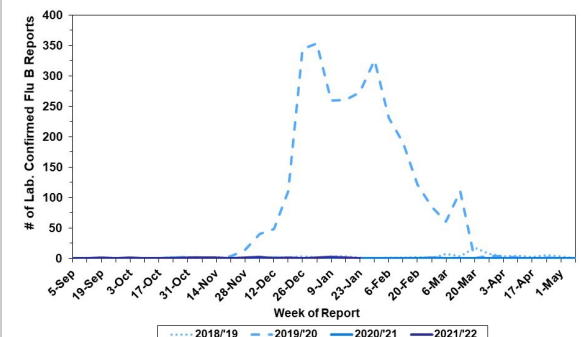
**Laboratory-Based Surveillance for Influenza A Philadelphia, 2018/2019 through 2021/2022 Seasons\***

\*Based on select hospital laboratories participating in surveillance across respiratory virus seasons



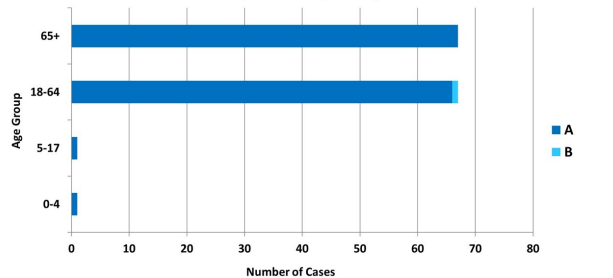
**Laboratory-Based Surveillance for Influenza B Philadelphia, 2018/2019 through 2021/2022 Seasons\***

\*Based on select hospital laboratories participating in surveillance across respiratory virus seasons



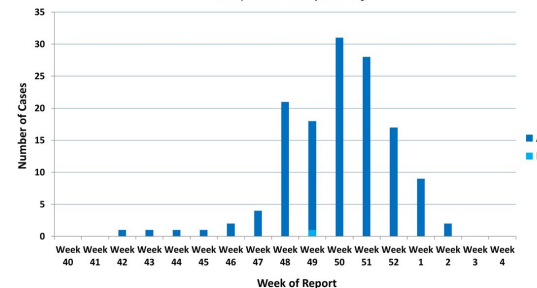
**Hospitalized Influenza\* by Age Group and Influenza Type Oct. 3, 2021 - Jan 29, 2022**

\*Laboratory confirmed influenza  
 \*Data are provisional and subject to change



**Weekly Counts of Hospitalizations by Influenza Type\* Oct. 3, 2021 - Jan 29, 2022**

\*Laboratory confirmed influenza  
 \*Data are provisional and subject to change



## Pennsylvania

As of January 29, 2022, the Pennsylvania Department of Health (PADOH) reported another decrease in flu activity this week. There have been 31,245 laboratory confirmed cases of influenza (positive by rapid test, PCR, or culture) reported so far this season, with influenza A remaining as the predominant type. There have been confirmed reports from all 67 counties. Twenty seven deaths have been reported so far this season. For more information, please visit: <https://www.health.pa.gov/topics/disease/Flu/Pages/2021-22-Flu.aspx>

## United States

As of January 29, 2022, the CDC reports that seasonal influenza activity was stable, with similar activity to the previous week. In week 4, clinical laboratories reported 1,543 specimens (1.9%) of 79,667 specimens tested positive for influenza. The majority of virus detections have been influenza A. Outpatient visits for respiratory illness decreased again this week, but is still above the national baseline. Hospitalizations for influenza have also slightly declined. This week, six jurisdictions reported moderate levels of flu activity and 12 jurisdictions had high activity. For more information, please visit: <https://www.cdc.gov/flu/weekly/index.htm>

**All institutional outbreaks and hospitalized and fatal cases of influenza are to be reported to PDPH.**

Phone: (215) 685-6742 Fax: (215) 238-6947 Email: [ACD@phila.gov](mailto:ACD@phila.gov) Reporting requirements and forms are posted online at [hip.phila.gov](http://hip.phila.gov)