



# PHILLY FLU FINDINGS

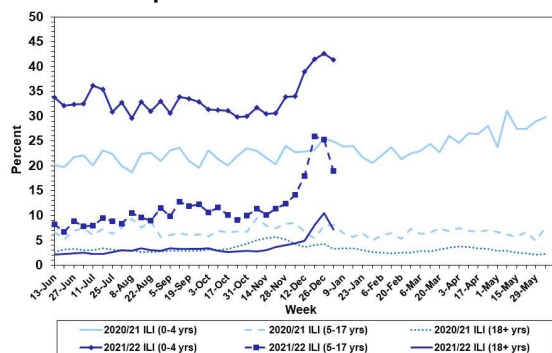
Philadelphia Department of Public Health  
 Seasonal Influenza Surveillance Report  
 MMWR Week 1: Jan 2, 2022—Jan. 8, 2022

## Philadelphia Influenza Activity

Please note these data are provisional and subject to change.

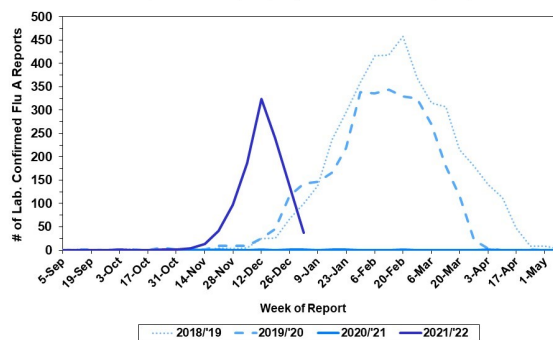
Febrile/flu-like illnesses at emergency departments declined for all age groups during week 1. Additionally, 38 specimens were reported as positive for influenza A or B from our 6 sentinel hospitals, a continued decrease from previous weeks. Since Oct 3, 2021, there have been 128 reports of severe influenza (Philadelphia resident, positive by rapid test, PCR or culture, and hospitalized for  $\geq 24$  hrs). Seven influenza outbreaks have been reported this season ( $\geq 1$  case of laboratory confirmed flu reported in a long term care facility or other high-risk congregate setting). No influenza-associated death was reported for week 1, and two have been reported thus far this season.

**Febrile/Flu-like Illnesses at Philadelphia Emergency Departments, Current Season Compared with Previous Season**



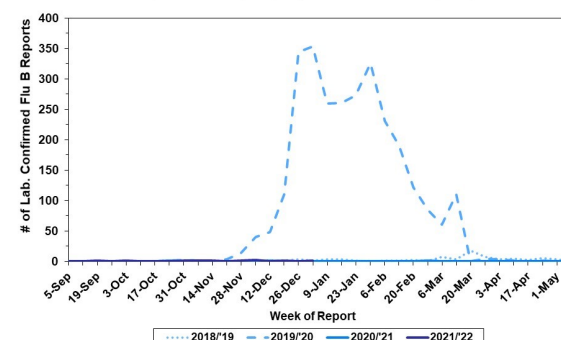
**Laboratory-Based Surveillance for Influenza A Philadelphia, 2018/2019 through 2021/2022 Seasons\***

\*Based on select hospital laboratories participating in surveillance across respiratory virus seasons



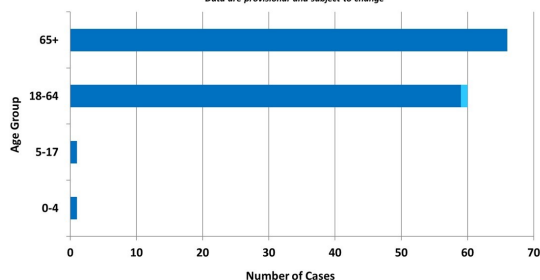
**Laboratory-Based Surveillance for Influenza B Philadelphia, 2018/2019 through 2021/2022 Seasons\***

\*Based on select hospital laboratories participating in surveillance across respiratory virus seasons



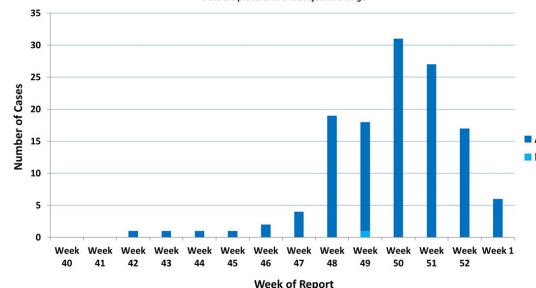
**Hospitalized Influenza\* by Age Group and Influenza Type Oct. 3, 2021 - Jan 8, 2022**

\*Laboratory confirmed influenza  
 \*Data are provisional and subject to change



**Weekly Counts of Hospitalizations by Influenza Type\* Oct 3, 2021 - Jan 8, 2022**

\*Laboratory confirmed influenza  
 \*Data are provisional and subject to change



## Pennsylvania

As of January 8, 2022, the Pennsylvania Department of Health (PADOH) reported a slight decrease in flu activity this week. There have been 26,143 laboratory confirmed cases of influenza (positive by rapid test, PCR, or culture) reported so far this season, with influenza A remaining as the predominant type. There have been confirmed reports from all 67 counties. Fourteen deaths have been reported so far this season. For more information, please visit: <https://www.health.pa.gov/topics/disease/Flu/Pages/2021-22-Flu.aspx>

## United States

As of January 8, 2022, the CDC reports that seasonal influenza activity decreased slightly this past week, though overall activity is still elevated. In week 1, clinical laboratories reported 2,203 specimens (2.2%) of 102,412 specimens tested positive for influenza. The majority of virus detections have been influenza A. Outpatient visits for respiratory illness decreased this week, but is still above the national baseline. Hospitalizations for influenza have also declined. This week, fourteen jurisdictions reported moderate levels of flu activity and 21 jurisdictions had high activity. For more information, please visit: <https://www.cdc.gov/flu/weekly/index.htm>

**All institutional outbreaks and hospitalized and fatal cases of influenza are to be reported to PDPH.**

Phone: (215) 685-6742 Fax: (215) 238-6947 Email: [ACD@phila.gov](mailto:ACD@phila.gov) Reporting requirements and forms are posted online at [hip.phila.gov](http://hip.phila.gov)