



# PHILLY FLU FINDINGS

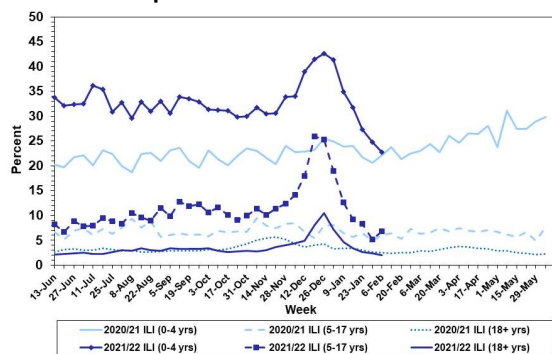
Philadelphia Department of Public Health  
 Seasonal Influenza Surveillance Report  
 MMWR Week 6: Feb. 6, 2022—Feb. 12, 2022

## Philadelphia Influenza Activity

Please note these data are provisional and subject to change.

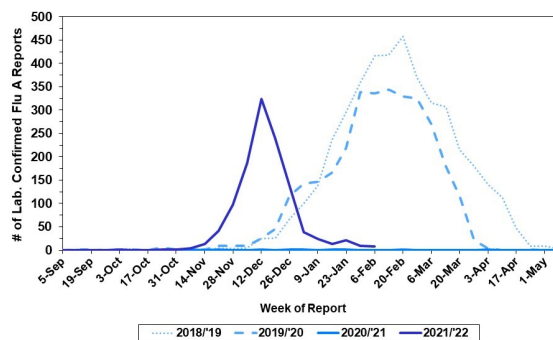
Flu-like illnesses at emergency departments declined for children 0-4 years and adults, but increased for those 5-17 years for week 6. Additionally, 8 specimens were reported as positive for influenza A or B from 5 of our 6 sentinel hospitals (one facility missing data), a decrease from the previous week. Since Oct 3, 2021, there have been 138 reports of severe influenza (Philadelphia resident, positive by rapid test, PCR or culture, and hospitalized for ≥ 24 hrs). Nine influenza outbreaks have been reported this season (≥ 1 case of lab. confirmed flu reported in a long term care facility or other high-risk congregate setting). No influenza-associated death was reported for week 6, and two have been reported thus far this season.

**Febrile/Flu-like Illnesses at Philadelphia Emergency Departments, Current Season Compared with Previous Season**



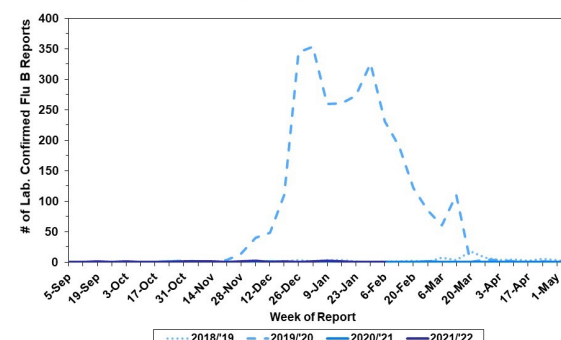
**Laboratory-Based Surveillance for Influenza A Philadelphia, 2018/2019 through 2021/2022 Seasons\***

\*Based on select hospital laboratories participating in surveillance across respiratory virus seasons



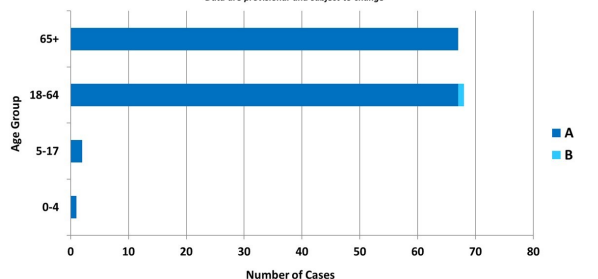
**Laboratory-Based Surveillance for Influenza B Philadelphia, 2018/2019 through 2021/2022 Seasons\***

\*Based on select hospital laboratories participating in surveillance across respiratory virus seasons



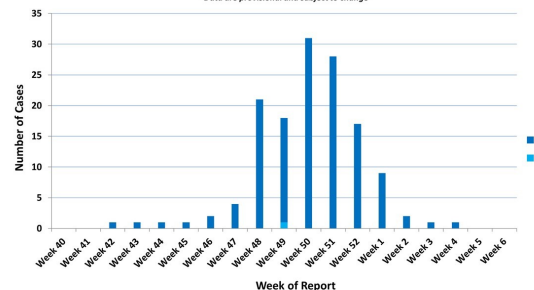
**Hospitalized Influenza\* by Age Group and Influenza Type Oct. 3, 2021 - Feb. 12, 2022**

\*Laboratory confirmed influenza  
 \*Data are provisional and subject to change



**Weekly Counts of Hospitalizations by Influenza Type\* Oct. 3, 2021 - Feb. 12, 2022**

\*Laboratory confirmed influenza  
 \*Data are provisional and subject to change



## Pennsylvania

As of February 12, 2022, the Pennsylvania Department of Health (PADOH) reported that flu activity was stable this week, with moderate activity overall. There have been 33,881 laboratory confirmed cases of influenza (positive by rapid test, PCR, or culture) reported so far this season, with influenza A remaining as the predominant type. There have been confirmed reports from all 67 counties. Thirty one deaths have been reported so far this season. For more information, please visit: <https://www.health.pa.gov/topics/disease/Flu/Pages/2021-22-Flu.aspx>

## United States

As of February 12, 2022, the CDC reported that seasonal influenza activity was sporadic across the country, though activity is increasing in some areas. In week 6, clinical laboratories reported 1,324 specimens (3.0%) of 40,934 specimens tested positive for influenza. The majority of virus detections have been influenza A. Outpatient visits for respiratory illness decreased this week, and is below the national baseline. However, hospitalizations for influenza have slightly increased. This week, there were no jurisdictions reporting moderate or high influenza activity. For more information, please visit: <https://www.cdc.gov/flu/weekly/index.htm>

**All institutional outbreaks and hospitalized and fatal cases of influenza are to be reported to PDPH.**

Phone: (215) 685-6742 Fax: (215) 238-6947 Email: [ACD@phila.gov](mailto:ACD@phila.gov) Reporting requirements and forms are posted online at [hip.phila.gov](http://hip.phila.gov)