



Philadelphia Department of Public Health Division of Disease Control

DONALD F. SCHWARZ, MD, MPH
Deputy Mayor, Health & Opportunity
Health Commissioner

NAN FEYLER, JD, MPH
Chief of Staff

CAROLINE C. JOHNSON, MD
Director, Division of Disease Control

Health Advisory

Respiratory Virus Surveillance Summary - RSV Circulating Broadly

November 22, 2011

Surveillance Summary

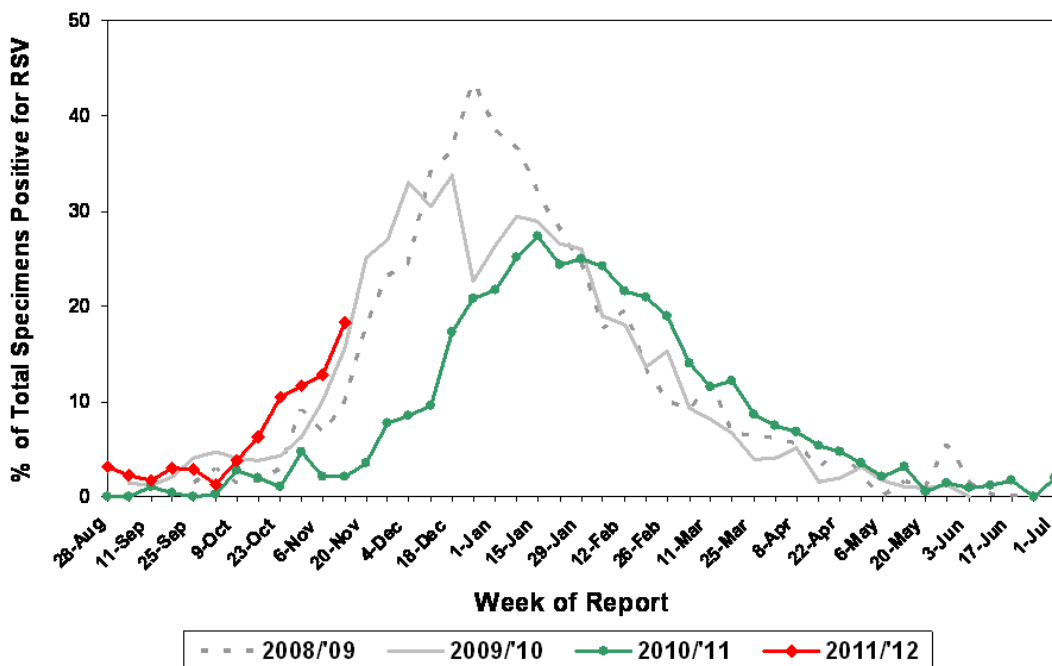
The Division of Disease Control (DDC) of the Philadelphia Department of Public Health monitors trends in the circulation of common respiratory viruses throughout each year. During the past several weeks, identification of respiratory syncytial virus (RSV) in respiratory specimens has increased steadily, with percent positivity approaching 20% last week (figure). Those at high risk for severe RSV-related illness include children under 2 years of age with chronic lung disease, premature infants < 35 weeks gestation at birth, and immunocompromised individuals. Although no vaccine exists, appropriate hand hygiene can help prevent RSV transmission to high risk individuals. Additionally, selected high-risk children < 24 months of age may benefit from palivizumab, the RSV monoclonal antibody preparation given monthly during RSV season to prevent RSV lower respiratory tract disease. For detailed information, please consult the Red Book 2009 Report of the Committee on Infectious Diseases, 28th ed. American Academy of Pediatrics; 2009: 560-569 or visit the website <http://aapredbook.aappublications.org/>.

In addition to RSV, rhinoviruses, parainfluenza viruses (all types) and adenoviruses are circulating in the metropolitan area. Only 2 confirmed cases of influenza have been reported locally since September. Sporadic cases have also occurred in Pennsylvania over the last several weeks. Indicators of influenza-like illness activity (emergency department and medical visits for influenza-like illness) remain low throughout Philadelphia and Pennsylvania. Influenza vaccine should be offered to all persons over 6 months of age who have not yet been immunized this season.



Laboratory-Based Surveillance for RSV (%): Philadelphia, 2008/2009 through 2011/2012 Seasons*

*Based on five hospital laboratories with RSV testing capabilities across respiratory virus seasons



Message #: PDPH-HAN-00156V-11-22-11
Philadelphia Department of Public Health

Division of Disease Control • 500 South Broad Street, Philadelphia, PA 19146
215-685-6740 (phone) • 215-686-4514 (after hours) • 215-238-6947 (fax) • www.phila.gov/health/DiseaseControl • hip.phila.gov