



PHILLY FLU FINDINGS

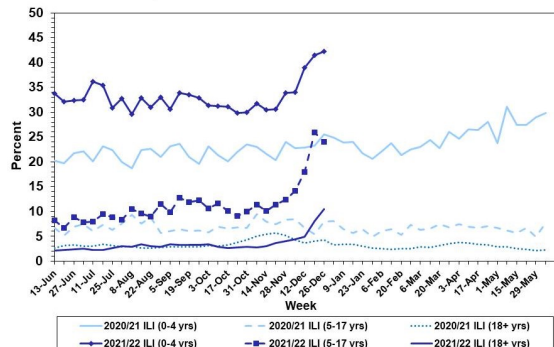
Philadelphia Department of Public Health
 Seasonal Influenza Surveillance Report
 MMWR Week 52: Dec 26, 2021—Jan. 1, 2022

Philadelphia Influenza Activity

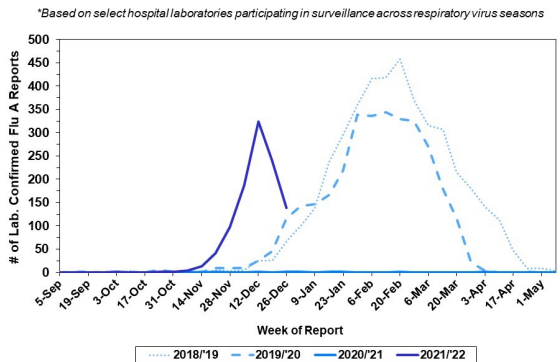
Please note these data are provisional and subject to change.

Febrile/flu-like illnesses at emergency departments increased for children 0–4 years and adults, while slightly dropping for children 5–17 years for week 52. Additionally, 139 specimens were reported as positive for influenza A or B from our 6 sentinel hospitals, a significant drop from previous weeks. Since Oct 3, 2021, there have been 104 reports of severe influenza (Philadelphia resident, positive by rapid test, PCR or culture, and hospitalized for ≥ 24 hrs). Seven influenza outbreaks have been reported this season (≥ 1 case of laboratory confirmed flu reported in a long term care facility or other high-risk congregate setting). No influenza-associated death was reported for week 52, and two have been reported thus far this season.

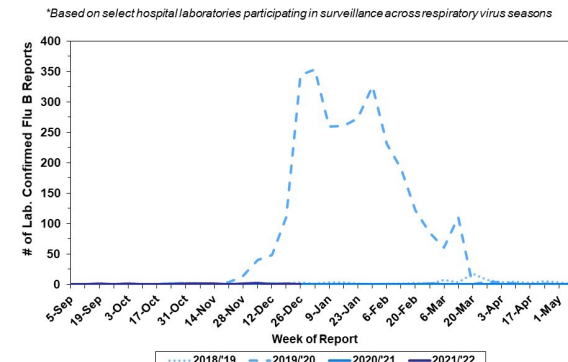
Febrile/Flu-like Illnesses at Philadelphia Emergency Departments, Current Season Compared with Previous Season



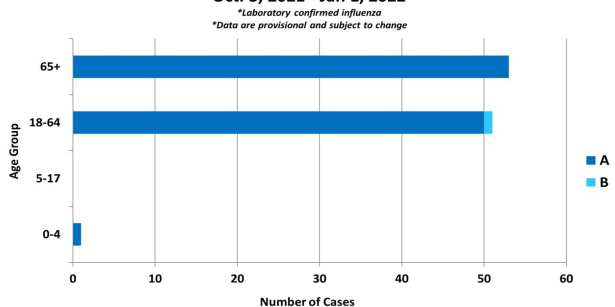
Laboratory-Based Surveillance for Influenza A Philadelphia, 2018/2019 through 2021/2022 Seasons*



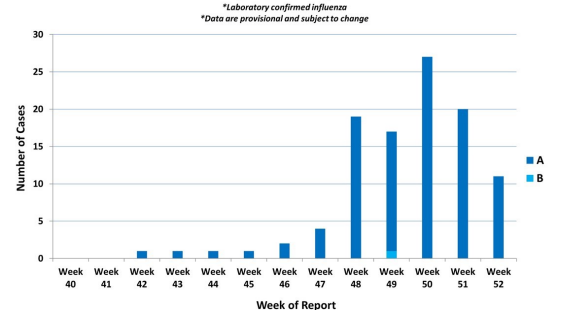
Laboratory-Based Surveillance for Influenza B Philadelphia, 2018/2019 through 2021/2022 Seasons*



Hospitalized Influenza* by Age Group and Influenza Type Oct. 3, 2021 - Jan 1, 2022



Weekly Counts of Hospitalizations by Influenza Type* Oct 3, 2021 - Jan 1, 2022



Pennsylvania

As of January 1, 2022, the Pennsylvania Department of Health (PADOH) reported continued increases in flu activity. There have been 22,792 laboratory confirmed cases of influenza (positive by rapid test, PCR, or culture) reported so far this season, with influenza A remaining as the predominant type. There have been confirmed reports from all 67 counties. Twelve deaths have been reported so far this season. For more information, please visit: <https://www.health.pa.gov/topics/disease/Flu/Pages/2021-22-Flu.aspx>

United States

As of January 1, 2022, the CDC reports that seasonal influenza activity continues to increase, with the eastern and central parts of the country seeing the most circulation. In week 52, clinical laboratories reported 4,413 specimens (3.8%) of 115,580 specimens tested positive for influenza. The majority of virus detections have been influenza A, and have been predominately detected from children and young adults; however, infections among those 25 years and older has increased. Hospitalizations for influenza are also increasing. This week, ten jurisdictions reported moderate levels of flu activity and 31 jurisdictions had high activity. For more information, please visit: <https://www.cdc.gov/flu/weekly/index.htm>

All institutional outbreaks and hospitalized and fatal cases of influenza are to be reported to PDPH.

Phone: (215) 685-6742 Fax: (215) 238-6947 Email: ACD@phila.gov Reporting requirements and forms are posted online at hip.phila.gov