



PHILLY FLU FINDINGS

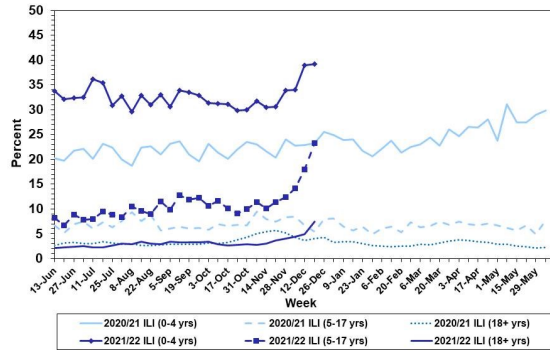
Philadelphia Department of Public Health
 Seasonal Influenza Surveillance Report
 MMWR Week 50: Dec 12, 2021—Dec. 18, 2021

Philadelphia Influenza Activity

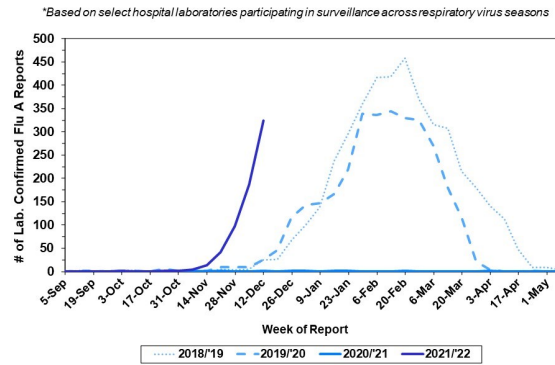
Please note these data are provisional and subject to change.

Febrile/flu-like illnesses continued to increase for all ages during week 50. During that week, 324 specimens were reported as positive for influenza A or B from our 6 sentinel hospitals, another significant increase from the previous week. Since Oct 3, 2021, there have been 36 reports of severe influenza (Philadelphia resident, positive by rapid test, PCR or culture, and hospitalized for ≥ 24 hrs). Three influenza outbreaks have been reported this season (≥ 1 case of laboratory confirmed flu reported in a long term care facility or other high-risk congregate setting). No influenza-associated death was reported for week 50, and only one has been reported thus far this season.

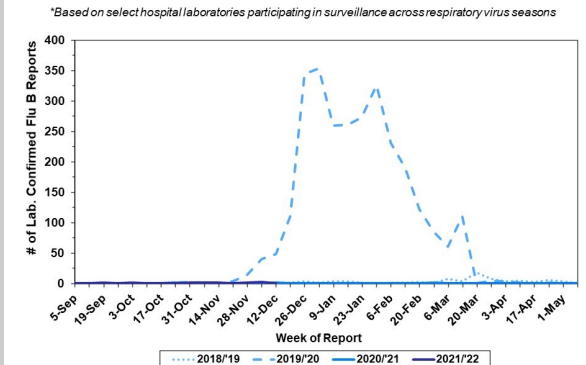
Febrile/Flu-like Illnesses at Philadelphia Emergency Departments, Current Season Compared with Previous Season



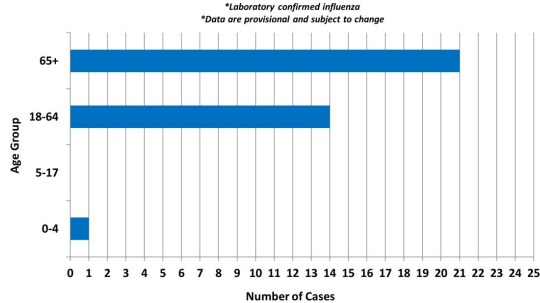
Laboratory-Based Surveillance for Influenza A Philadelphia, 2018/2019 through 2021/2022 Seasons*



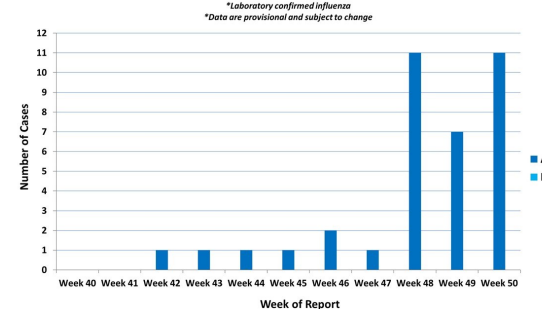
Laboratory-Based Surveillance for Influenza B Philadelphia, 2018/2019 through 2021/2022 Seasons*



Hospitalized influenza* by Age Group and Influenza Type Oct. 3, 2021 - Dec. 18, 2021



Weekly Counts of Hospitalizations by Influenza Type* Oct 3, 2021 - Dec 18, 2021



Pennsylvania

As of December 18, 2021, the Pennsylvania Department of Health (PADOH) reported continued increases in flu activity, with high activity overall. There have been 12,950 laboratory confirmed cases of influenza (positive by rapid test, PCR, or culture) reported so far this season, with influenza A as the predominant type. There have been confirmed reports from 66 out of 67 counties. Nine deaths have been reported so far this season. For more information, please visit: <https://www.health.pa.gov/topics/disease/Flu/Pages/2021-22-Flu.aspx>

United States

Note: CDC has not yet posted week 50 data. As of December 11, 2021, the CDC reports that seasonal influenza activity is increasing, with the eastern and central parts of the country seeing the most significant increases. In week 49, clinical laboratories reported 2,438 specimens (3.5%) of 70,157 specimens tested positive for influenza. The majority of virus detections have been influenza A, and have been predominately detected from children and young adults; however, infections among those 25 years and older has increased. Hospitalizations for influenza are also increasing. This week, ten jurisdictions reported moderate levels of flu activity and two jurisdictions had high activity. For more information, please visit: <https://www.cdc.gov/flu/weekly/index.htm>

All institutional outbreaks and hospitalized and fatal cases of influenza are to be reported to PDPH.

Phone: (215) 685-6742 Fax: (215) 238-6947 Email: ACD@phila.gov Reporting requirements and forms are posted online at hip.phila.gov