



PHILLY FLU FINDINGS

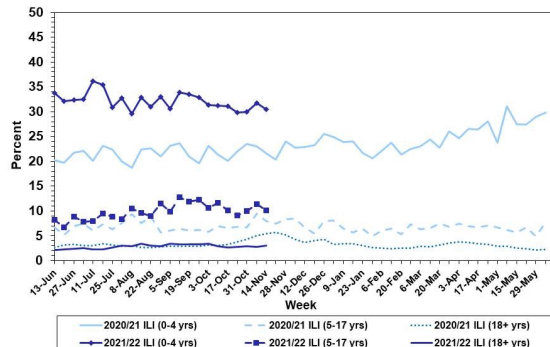
Philadelphia Department of Public Health
 Seasonal Influenza Surveillance Report
 MMWR Week 46: Nov. 14, 2021—Nov. 20, 2021

Philadelphia Influenza Activity

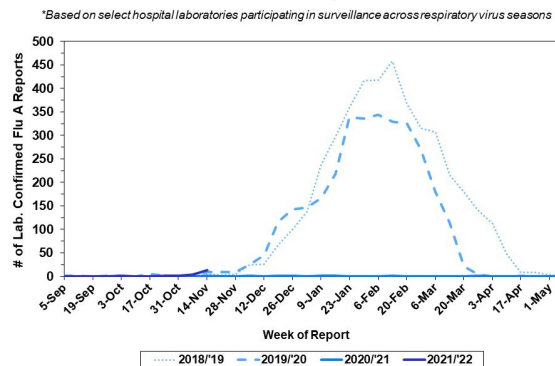
Please note these data are provisional and subject to change.

Febrile/flu-like illnesses have trended higher for children 5-17 years since the start of the school year, while visits for children 0-4 years remain flat and visits for adults are below normal. Fifteen specimens were reported as positive for influenza A or B from our 6 sentinel hospital laboratories for week 46. Since Oct 3, 2021, there have been 6 reports of severe influenza (Philadelphia resident, positive by rapid test, PCR or culture, and hospitalized for \geq 24 hrs). One influenza outbreak has been reported (\geq 1 case of laboratory confirmed flu reported in a long term care facility). No influenza-associated deaths have been reported thus far.

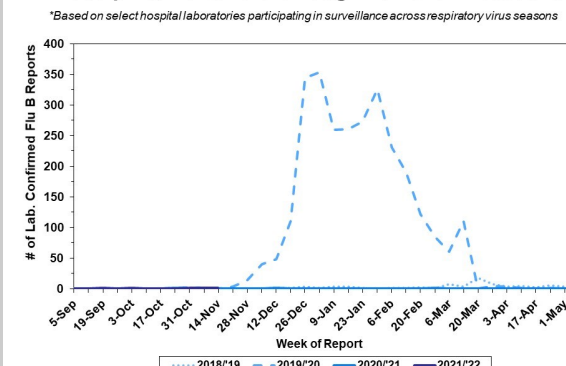
Febrile/Flu-like Illnesses at Philadelphia Emergency Departments, Current Season Compared with Previous Season



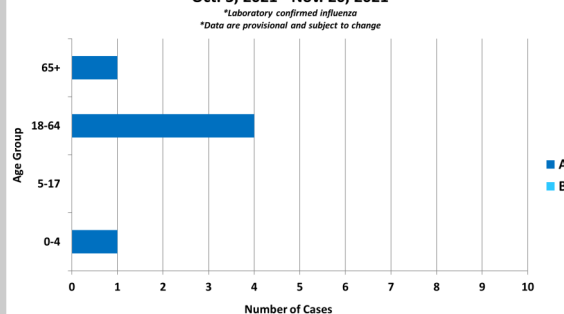
Laboratory-Based Surveillance for Influenza A Philadelphia, 2018/2019 through 2021/2022 Seasons*



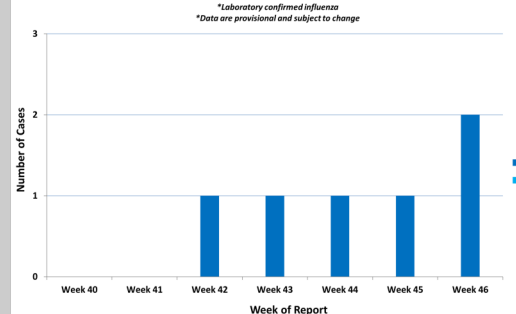
Laboratory-Based Surveillance for Influenza B Philadelphia, 2018/2019 through 2021/2022 Seasons*



Hospitalized Influenza* by Age Group and Influenza Type Oct. 3, 2021 - Nov. 20, 2021



Weekly Counts of Hospitalizations by Influenza Type* Oct. 3, 2021 - Nov. 20, 2021



Pennsylvania

As of November 20, 2021, the Pennsylvania Department of Health (PADOH) reported a slight decrease in flu activity, with overall activity remaining low. There have been 1,651 laboratory confirmed cases of influenza (positive by rapid test, PCR, or culture) reported in week 46, with influenza A as the predominant type. There have been confirmed reports from 53 out of 67 counties. One death has been reported. For more information, please visit: <https://www.health.pa.gov/topics/disease/Flu/Pages/2021-22-Flu.aspx>

United States

As of November 20, 2021, the CDC reports that seasonal influenza activity remained low, but that influenza positive reports from clinical and public health laboratories have increased in recent weeks, along with visits for influenza-like illness. In week 46, clinical laboratories reported 415 specimens (1.0%) of 40,167 specimens tested positive for influenza. The majority of virus detections have been influenza A, and have been predominately detected from children and young adults. Most jurisdictions reported minimal levels of flu activity, while two jurisdictions had moderate activity and one jurisdiction had high activity. For more information, please visit: <https://www.cdc.gov/flu/weekly/index.htm>

All institutional outbreaks and hospitalized and fatal cases of influenza are to be reported to PDPH.

Phone: (215) 685-6742 Fax: (215) 238-6947 Email: ACD@phila.gov Reporting requirements and forms are posted online at hip.phila.gov