



PHILLY FLU FINDINGS

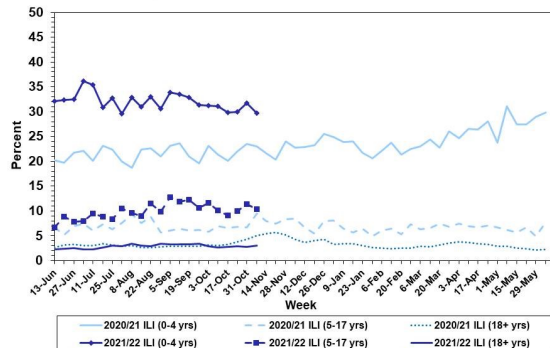
Philadelphia Department of Public Health
 Seasonal Influenza Surveillance Report
 MMWR Week 45: Nov. 7, 2021—Nov. 13, 2021

Philadelphia Influenza Activity

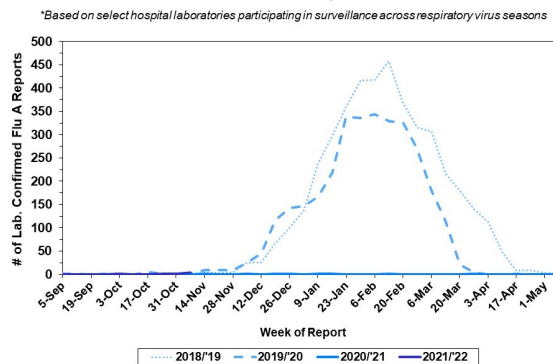
Please note these data are provisional and subject to change.

Febrile/flu-like illnesses have trended higher for children 5-17 years since the start of the school year, while visits for children 0-4 years remain flat and visits for adults are now below normal. Only five specimens were reported as positive for influenza A or B from our 6 sentinel hospital laboratories for week 45. Since Oct 3, 2021, there have been 3 reports of severe influenza (Philadelphia resident, positive by rapid test, PCR or culture, and hospitalized for ≥ 24 hrs). Zero influenza outbreaks were reported (≥ 1 case of laboratory confirmed flu reported in a long term care facility). No influenza-associated deaths have been reported thus far.

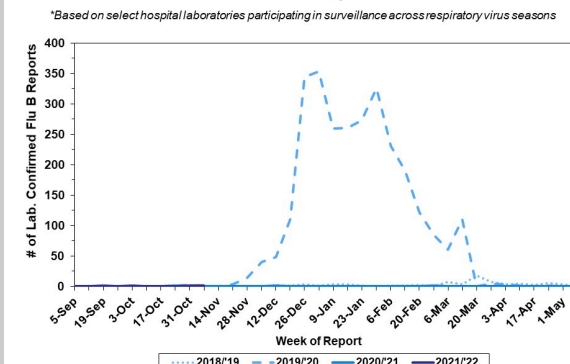
Febrile/Flu-like Illnesses at Philadelphia Emergency Departments, Current Season Compared with Previous Season



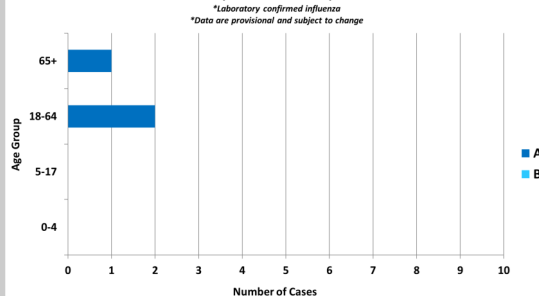
Laboratory-Based Surveillance for Influenza A Philadelphia, 2018/2019 through 2021/2022 Seasons*



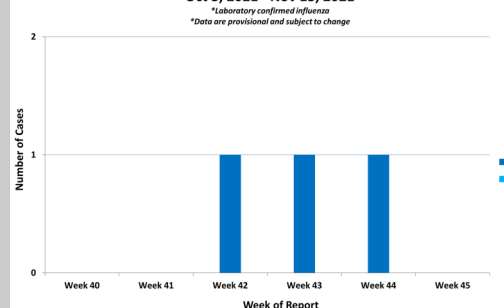
Laboratory-Based Surveillance for Influenza B Philadelphia, 2018/2019 through 2021/2022 Seasons*



Hospitalized Influenza* by Age Group and Influenza Type Oct. 3, 2021 - Nov. 13, 2021



Weekly Counts of Hospitalizations by Influenza Type* Oct 3, 2021 - Nov 13, 2021



Pennsylvania

As of November 13, 2021, the Pennsylvania Department of Health (PADOH) reported significant increases in flu activity this week, though overall activity remains low. There have been 1,076 laboratory confirmed cases of influenza (positive by rapid test, PCR, or culture) reported so far this season, with influenza A as the predominant type. There have been confirmed reports from 52 out of 67 counties. One death has been reported so far this season. For more information, please visit: <https://www.health.pa.gov/topics/disease/Flu/Pages/2021-22-Flu.aspx>

United States

As of November 13, 2021, the CDC reports that seasonal influenza activity remained low, but that influenza positive reports from clinical and public health laboratories have increased in recent weeks, along with visits for influenza-like illness. In week 45, clinical laboratories reported 257 specimens (0.7%) of 38,685 specimens tested positive for influenza. The majority of virus detections have been influenza A, and have been predominately detected from children and young adults. Most jurisdictions reported minimal levels of flu activity, while one jurisdiction had moderate activity and one jurisdiction had high activity. For more information, please visit: <https://www.cdc.gov/flu/weekly/index.htm>

All institutional outbreaks and hospitalized and fatal cases of influenza are to be reported to PDPH.

Phone: (215) 685-6742 Fax: (215) 238-6947 Email: ACD@phila.gov Reporting requirements and forms are posted online at hip.phila.gov