



# PHILLY FLU FINDINGS

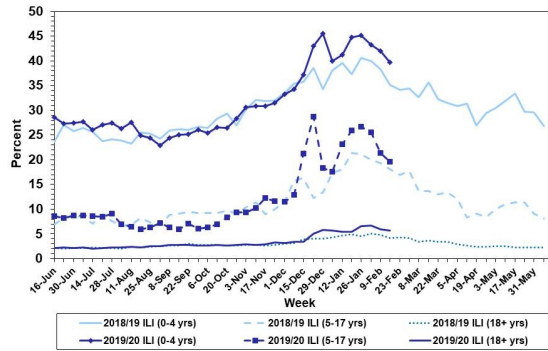
Philadelphia Department of Public Health  
 Seasonal Influenza Surveillance Report  
 MMWR Week 8: Feb 16, 2020 —Feb 22, 2020

## Philadelphia Influenza Activity

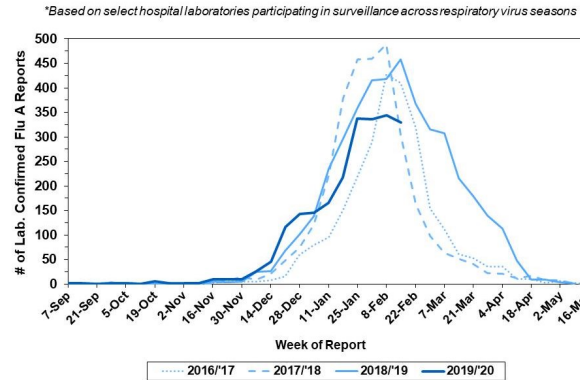
Please note these data are provisional and subject to change.

Febrile/flu-like illnesses decreased among all age groups during week 7. 451 specimens were reported from our sentinel hospital laboratory surveillance for influenza A and B during the same time period among the 6 participating laboratories, a majority of which (329) was influenza A. 50 reports of severe influenza (Philadelphia resident, positive by rapid test, PCR or culture, and hospitalized for ≥ 24 hrs) have been reported this week (season-to-date = 889), with 45 reports (90%) positive for influenza A. 3 influenza outbreaks (≥ 1 case of laboratory confirmed influenza reported in a long term care facility) were reported. 17 influenza-associated deaths have been reported with no pediatric mortalities to date.

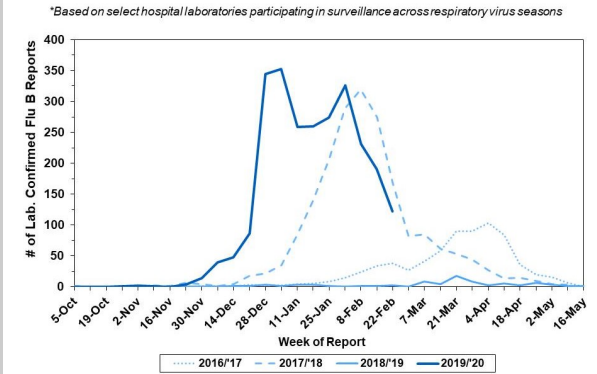
**Febrile/Flu-like Illnesses at Philadelphia Emergency Departments, Current Season Compared with Previous Season**



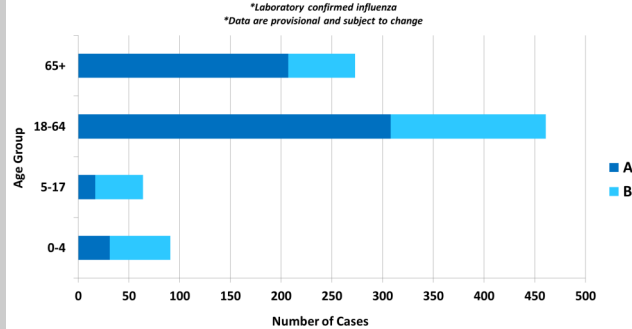
**Laboratory-Based Surveillance for Influenza A Philadelphia, 2016/2017 through 2019/2020 Seasons\***



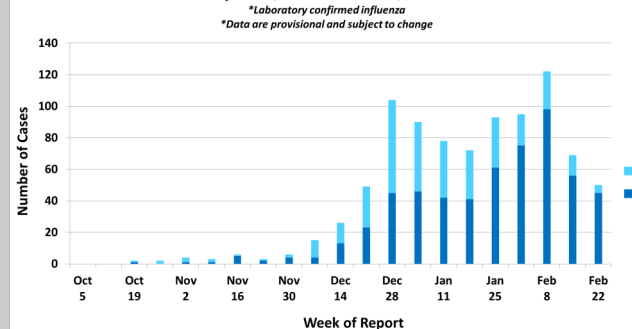
**Laboratory-Based Surveillance for Influenza B Philadelphia, 2016/2017 through 2019/2020 Seasons\***



**Hospitalized Influenza\* by Age Group and Influenza Type Sept. 29, 2019 - Feb. 22, 2020**



**Weekly Counts of Hospitalizations by Influenza Type\* Sept. 29, 2019 - Feb. 22, 2020**



## Pennsylvania

The Pennsylvania Department of Health continues to report widespread activity, with a decrease in positive laboratory tests from over 10,000 cases reported last week to above 7,000 cases reported this week. Of Influenza A, A/pH1N1 is the most prominent strain, as 82% of the 225 sub-typing results from the state public health lab was positive for A/pH1N1. 2,228 flu-associated hospitalizations and 66 flu-associated deaths have been reported. For more information, please visit: <https://www.health.pa.gov/topics/disease/Flu/Pages/2019-20-Flu.aspx>

## United States

Flu activity has decreased for the second week in a row, with percentage of specimen testing positive for influenza B reducing while the percentage testing positive for influenza A continuing to increase. Interim estimates of flu vaccine effectiveness (VE) for preventing medically attended, laboratory-confirmed flu virus infection shows VE was 45% against influenza A and B virus types combined, 50% against influenza B/Victoria, and 37% against A(H1N1)pdm09. 125 influenza-associated deaths in children have been reported this season. For more information, please visit: <https://www.cdc.gov/flu/weekly/index.htm>

**All institutional outbreaks and hospitalized and fatal cases of influenza are to be reported to PDPH.**

Phone: (215) 685-6742 Fax: (215) 238-6947 Email: [ACD@phila.gov](mailto:ACD@phila.gov) Reporting requirements and forms are posted online at [hip.phila.gov](http://hip.phila.gov)