



PHILLY FLU FINDINGS

Philadelphia Department of Public Health
Seasonal Influenza Surveillance Report

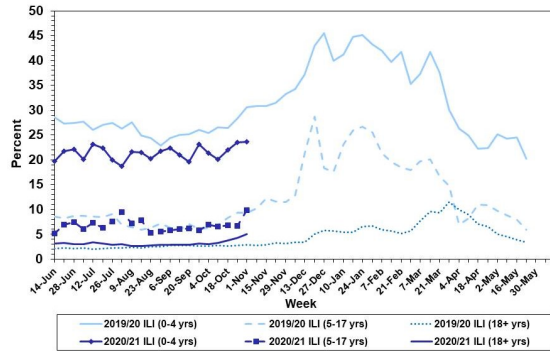
MMWR Week 40-46: September 27, 2020 — November 14, 2020

Philadelphia Influenza Activity

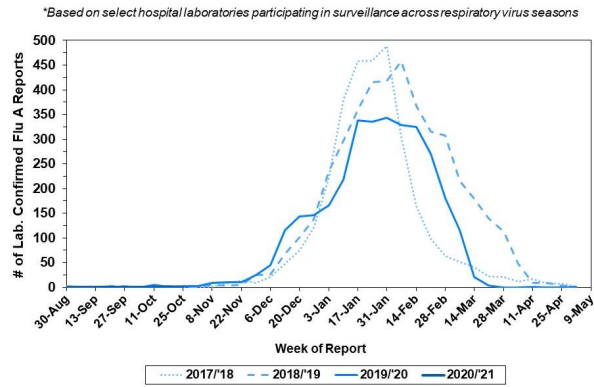
Please note these data are provisional and subject to change.

Febrile/flu-like illnesses have increased for persons 5 yrs and older recently. Only a couple specimens were reported as positive for influenza A from our 6 sentinel hospital laboratories in the last several weeks. Since Sept. 27, 2020, there have been 4 reports of severe influenza (Philadelphia resident, positive by rapid test, PCR or culture, and hospitalized for \geq 24 hrs). All four cases were influenza A positive from rapid antigen tests and none tested positive for COVID-19. One influenza outbreak was reported (\geq 1 case of laboratory confirmed flu reported in a long term care facility). Zero influenza-associated deaths have been reported.

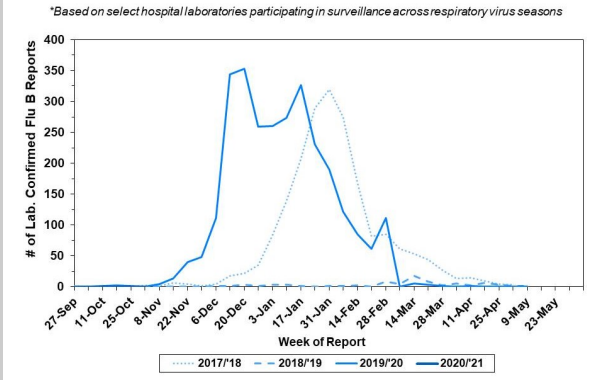
Febrile/Flu-like Illnesses at Philadelphia Emergency Departments, Current Season Compared with Previous Season



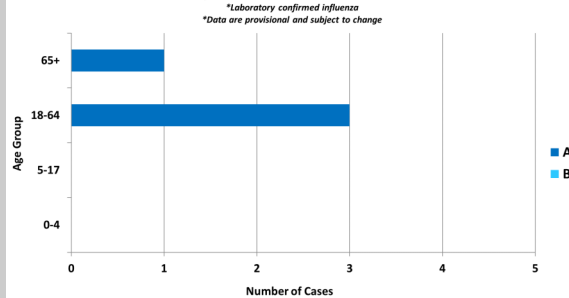
Laboratory-Based Surveillance for Influenza A Philadelphia, 2017/2018 through 2020/2021 Seasons*



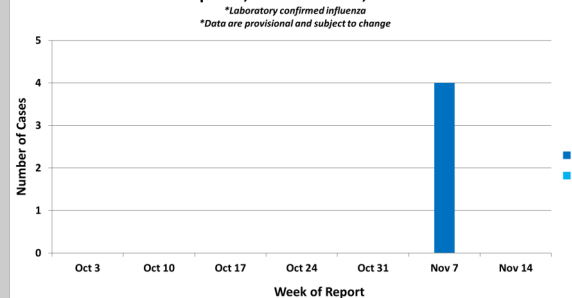
Laboratory-Based Surveillance for Influenza B Philadelphia, 2017/2018 through 2020/2021 Seasons*



Hospitalized Influenza* by Age Group and Influenza Type
Sept. 27, 2020 - Nov. 14, 2020



Weekly Counts of Hospitalizations by Influenza Type*
Sept. 27, 2020 - Nov. 14, 2020



Pennsylvania

The Pennsylvania Department of Health (PADOH) reports low activity levels across the state. Since Sept 27, 2020 there have been 383 laboratory confirmed cases of influenza (positive by rapid test, PCR, or culture). Nine influenza-associated hospitalizations and 1 death have been reported. For more information, please visit: <https://www.health.pa.gov/topics/disease/Flu/Pages/2019-20-Flu.aspx>

United States

Seasonal influenza activity remains low in the United States. Influenza-related illness (ILI) activity in outpatient settings remains minimal, except with very high activity in Iowa. In clinical laboratories, 30 (.2%) of 15,656 specimens tested positive for influenza, which is lower than the 5% of specimens testing positive last year in week 45 (1489 positive out of 28,842 specimen). There were similar low amounts of positive specimen in public health laboratories. Hospitalization rates will be updated later this season. This week, 8.9% of deaths due to pneumonia, influenza and COVID-19 remain above the epidemic threshold at 6.1%. For more information, please visit: <https://www.cdc.gov/flu/weekly/index.htm>

All institutional outbreaks and hospitalized and fatal cases of influenza are to be reported to PDPH.

Phone: (215) 685-6742 Fax: (215) 238-6947 Email: ACD@phila.gov Reporting requirements and forms are posted online at hip.phila.gov