



# PHILLY FLU FINDINGS

Philadelphia Department of Public Health  
Seasonal Influenza Surveillance Report

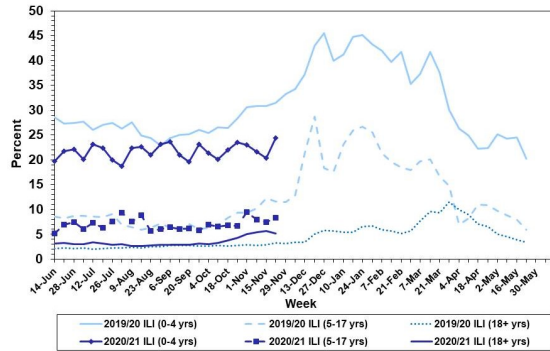
MMWR Week 49: November 29, 2020 — December 5, 2020

## Philadelphia Influenza Activity

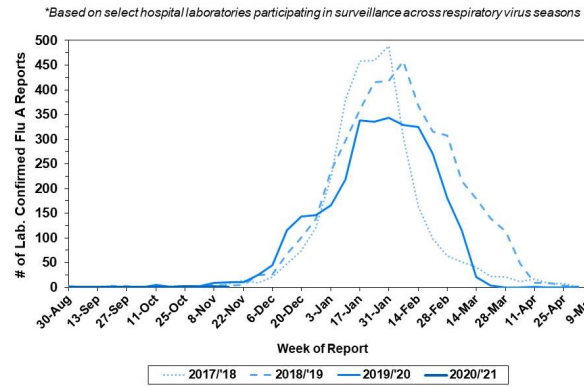
Please note these data are provisional and subject to change.

Febrile/flu-like illnesses have increased for children and adolescents for week 49. No specimens were reported as positive for influenza A or B from our 6 sentinel hospital laboratories last week. Since Sept. 27, 2020, there have been 8 reports of severe influenza (Philadelphia resident, positive by rapid test, PCR or culture, and hospitalized for  $\geq 24$  hrs). Seven cases were influenza A positive and 1 influenza B positive. No cases also tested positive for COVID-19. Zero influenza outbreaks were reported ( $\geq 1$  case of laboratory confirmed flu reported in a long term care facility). Zero influenza-associated deaths have been reported.

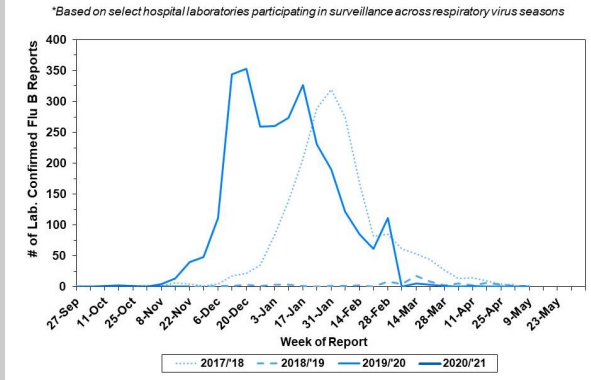
**Febrile/Flu-like Illnesses at Philadelphia Emergency Departments, Current Season Compared with Previous Season**



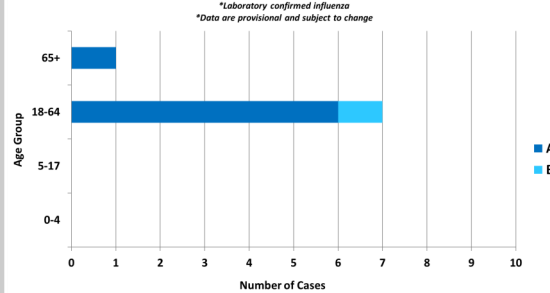
**Laboratory-Based Surveillance for Influenza A Philadelphia, 2017/2018 through 2020/2021 Seasons\***



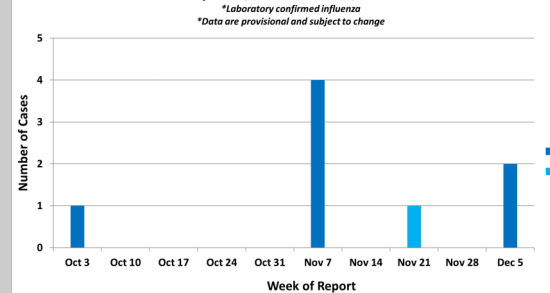
**Laboratory-Based Surveillance for Influenza B Philadelphia, 2017/2018 through 2020/2021 Seasons\***



**Hospitalized Influenza\* by Age Group and Influenza Type Sept. 27, 2020 - Dec. 5, 2020**



**Weekly Counts of Hospitalizations by Influenza Type\* Sept. 27, 2020 - Dec. 5, 2020**



## Pennsylvania

The Pennsylvania Department of Health (PADOH) reports low activity levels across the state. Since Sept 27, 2020 there have been 480 laboratory confirmed cases of influenza (positive by rapid test, PCR, or culture). 12 influenza-associated hospitalizations and 1 death have been reported. For more information, please visit: <https://www.health.pa.gov/topics/disease/Flu/Pages/2019-20-Flu.aspx>

## United States

As of November 28, 2020, the CDC reports that seasonal influenza activity remains lower than usual for this time of year. In clinical laboratories, (0.1%) of specimens tested positive for influenza this week, which is lower than the 10.2% of specimens testing positive for influenza last year at the same time. There were similar low amounts of positive specimen in public health laboratories. Influenza-like activity seen in outpatient settings is below region specific baselines in all 10 U.S. regions. For more information, please visit: <https://www.cdc.gov/flu/weekly/index.htm>

**All institutional outbreaks and hospitalized and fatal cases of influenza are to be reported to PDPH.**

Phone: (215) 685-6742 Fax: (215) 238-6947 Email: [ACD@phila.gov](mailto:ACD@phila.gov) Reporting requirements and forms are posted online at [hip.phila.gov](http://hip.phila.gov)