



PHILLY FLU FINDINGS

Philadelphia Department of Public Health
Seasonal Influenza Surveillance Report

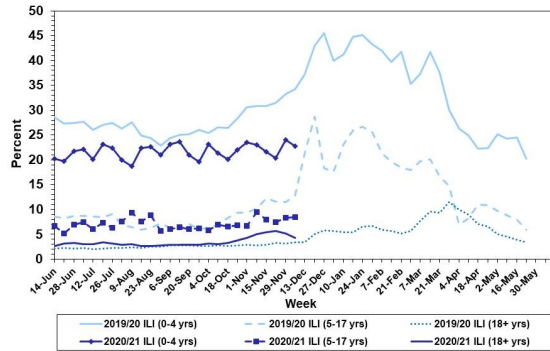
MMWR Week 50: December 6, 2020 —December 12, 2020

Philadelphia Influenza Activity

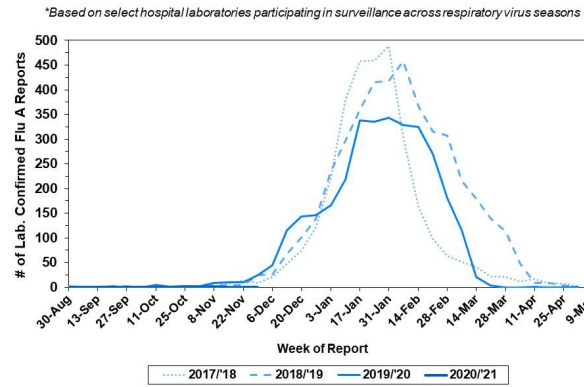
Please note these data are provisional and subject to change.

Febrile/flu-like illnesses decreased for children 0-4 years and adults 65+ years for week 50, while staying level for those 5-17 years. No specimens were reported as positive for influenza A or B from our 6 sentinel hospital laboratories for week 50. Since Sept. 27, 2020, there have been 8 reports of severe influenza (Philadelphia resident, positive by rapid test, PCR or culture, and hospitalized for ≥ 24 hrs), with no new cases seen in Week 50. Seven cases were influenza A positive and 1 influenza B positive. No cases also tested positive for COVID-19. Zero influenza outbreaks were reported (≥ 1 case of laboratory confirmed flu reported in a long term care facility). Zero influenza-associated deaths have been reported.

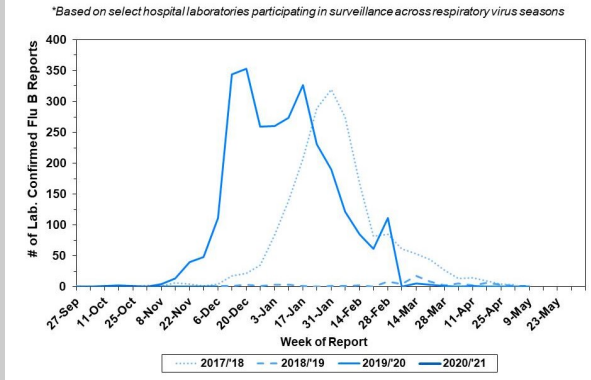
Febrile/Flu-like Illnesses at Philadelphia Emergency Departments, Current Season Compared with Previous Season



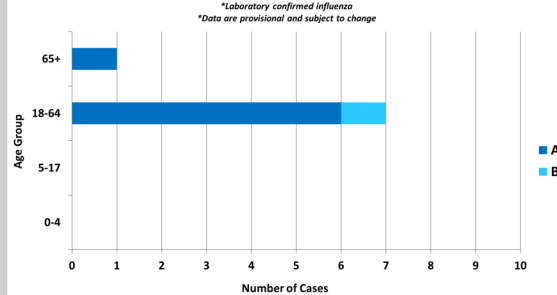
Laboratory-Based Surveillance for Influenza A Philadelphia, 2017/2018 through 2020/2021 Seasons*



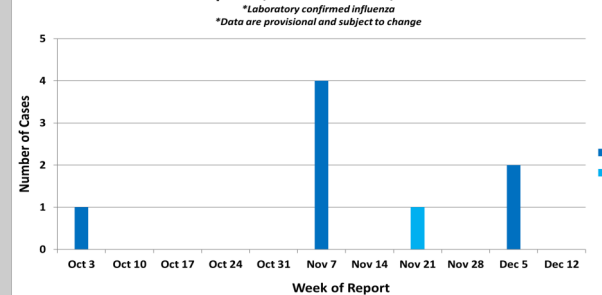
Laboratory-Based Surveillance for Influenza B Philadelphia, 2017/2018 through 2020/2021 Seasons*



Hospitalized Influenza* by Age Group and Influenza Type Sept. 27, 2020 - Dec. 12, 2020



Weekly Counts of Hospitalizations by Influenza Type* Sept. 27, 2020 - Dec. 12, 2020



Pennsylvania

The Pennsylvania Department of Health (PADOH) reports low activity levels across the state. Since Sept 27, 2020 there have been 643 laboratory confirmed cases of influenza (positive by rapid test, PCR, or culture), with 94 new laboratory confirmed cases of influenza seen in Week 50. 16 influenza-associated hospitalizations and 5 deaths have been reported. For more information, please visit: <https://www.health.pa.gov/topics/disease/Flu/Pages/2020-21-Flu.aspx>

United States

As of December 12, 2020, the CDC reports that seasonal influenza activity remains lower than usual for this time of year. In clinical laboratories, 75 (0.3%) of 29,578 specimens tested positive for influenza in Week 50 compared to 5,515 (16.3%) of 33,918 specimens testing positive for influenza last year at the same time. There were similar low amounts of positive specimen in public health laboratories. Influenza-like activity seen in outpatient settings is below region specific baselines in all 10 U.S. regions. 1 influenza-associated pediatric death has been reported this season. For more information, please visit: <https://www.cdc.gov/flu/weekly/index.htm>

All institutional outbreaks and hospitalized and fatal cases of influenza are to be reported to PDPH.

Phone: (215) 685-6742 Fax: (215) 238-6947 Email: ACD@phila.gov Reporting requirements and forms are posted online at hip.phila.gov