



PHILLY FLU FINDINGS

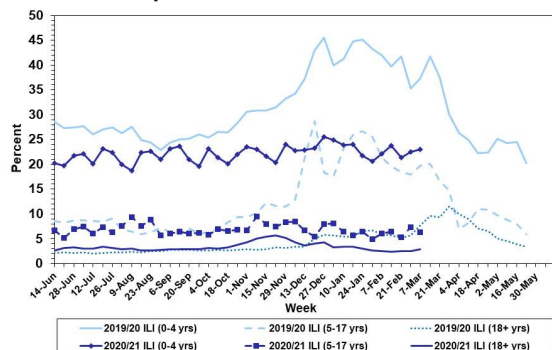
Philadelphia Department of Public Health
 Seasonal Influenza Surveillance Report
 MMWR Week 10: March 7 2021—March 13, 2021

Philadelphia Influenza Activity

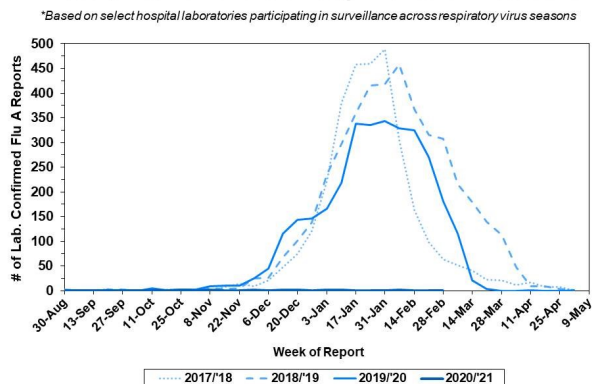
Please note these data are provisional and subject to change.

Febrile/flu-like illnesses continued to remain lower than normal for week 10 among all age groups. No specimen was reported as positive for influenza A or B from our 6 sentinel hospital laboratories for week 10. Since Sept. 27, 2020, there have been 11 reports of severe influenza (Philadelphia resident, positive by rapid test, PCR or culture, and hospitalized for ≥ 24 hrs). Zero influenza outbreaks were reported (≥ 1 case of laboratory confirmed flu reported in a long term care facility). Zero influenza-associated deaths confirmed by PCR have been reported.

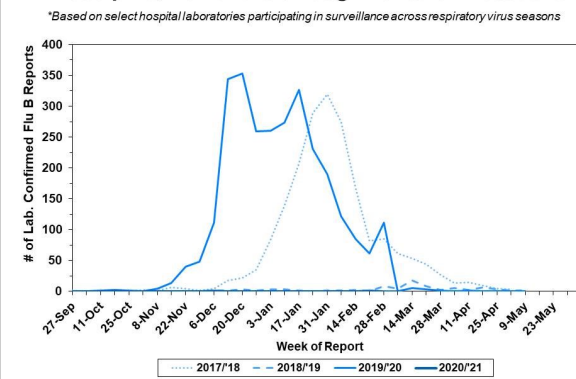
Febrile/Flu-like Illnesses at Philadelphia Emergency Departments, Current Season Compared with Previous Season



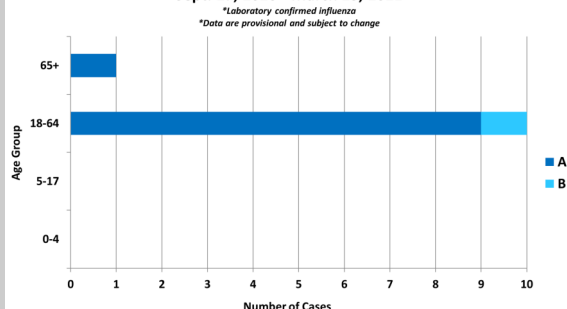
Laboratory-Based Surveillance for Influenza A Philadelphia, 2017/2018 through 2020/2021 Seasons*



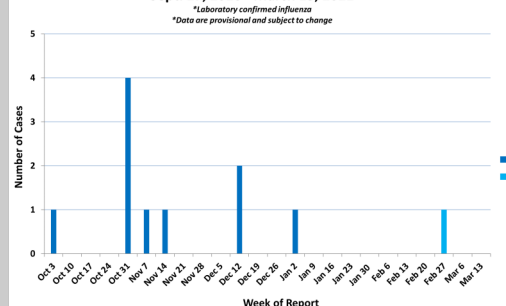
Laboratory-Based Surveillance for Influenza B Philadelphia, 2017/2018 through 2020/2021 Seasons*



Hospitalized Influenza* by Age Group and Influenza Type Sept. 27, 2020 - March 13, 2021



Weekly Counts of Hospitalizations by Influenza Type* Sept. 27, 2020 - March 13, 2021



Pennsylvania

The Pennsylvania Department of Health (PADOH) continues to report low activity levels across the state. Since Sept 27, 2020 there have been 2,991 laboratory confirmed cases of influenza (positive by rapid test, PCR, or culture). 38 influenza-associated hospitalizations have been reported across PA, with an increase of 1 hospitalization in the past week. 15 deaths have been reported this flu season. For more information, please visit: <https://www.health.pa.gov/topics/disease/Flu/Pages/2020-21-Flu.aspx>

United States

As of March 13, 2021, the CDC reports that seasonal influenza activity remains lower than usual for this time of year. In clinical laboratories, 27 (0.1%) of 23,618 specimens tested positive for influenza in Week 10, with similar low reports of influenza positives reported in public health laboratories. All jurisdictions reported minimal level of flu activity. The current cumulative hospitalization rate is 0.7 per 100,000, which is about 1/4 the rate at this time during the low severity 2011-2012 year. For more information, please visit: <https://www.cdc.gov/flu/weekly/index.htm>

All institutional outbreaks and hospitalized and fatal cases of influenza are to be reported to PDPH.

Phone: (215) 685-6742 Fax: (215) 238-6947 Email: ACD@phila.gov Reporting requirements and forms are posted online at hip.phila.gov