



# PHILLY FLU FINDINGS

Philadelphia Department of Public Health  
Seasonal Influenza Surveillance Report

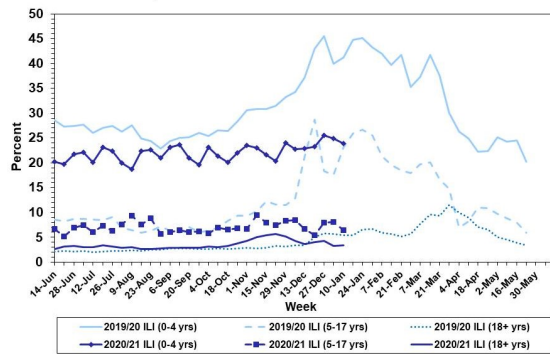
MMWR Week 2: January 10, 2021—January 16, 2021

## Philadelphia Influenza Activity

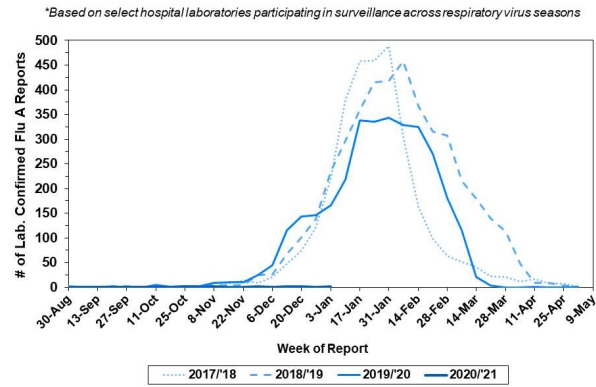
Please note these data are provisional and subject to change.

Febrile/flu-like illnesses continued to remain lower than normal for week 2 among all age groups. Only one specimen was reported as positive for influenza A or B from our 6 sentinel hospital laboratories for week 2. Since Sept. 27, 2020, there have been 9 reports of severe influenza (Philadelphia resident, positive by rapid test, PCR or culture, and hospitalized for ≥ 24 hrs), with 0 new cases seen during Week 2. Eight cases were influenza A positive and 1 influenza B positive. No cases also tested positive for COVID-19. Zero influenza outbreaks were reported (≥ 1 case of laboratory confirmed flu reported in a long term care facility). Zero influenza-associated deaths have been reported.

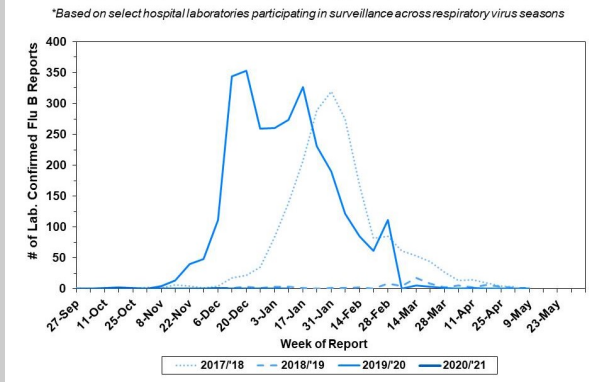
**Febrile/Flu-like Illnesses at Philadelphia Emergency Departments, Current Season Compared with Previous Season**



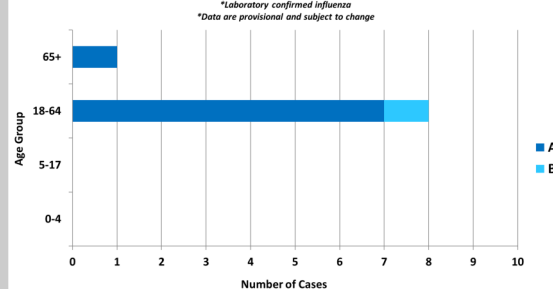
**Laboratory-Based Surveillance for Influenza A Philadelphia, 2017/2018 through 2020/2021 Seasons\***



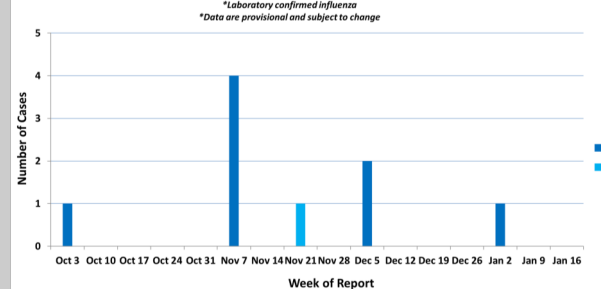
**Laboratory-Based Surveillance for Influenza B Philadelphia, 2017/2018 through 2020/2021 Seasons\***



**Hospitalized Influenza\* by Age Group and Influenza Type Sept. 27, 2020 - Jan. 16, 2021**



**Weekly Counts of Hospitalizations by Influenza Type\* Sept. 27, 2020 - Jan. 16, 2021**



## Pennsylvania

The Pennsylvania Department of Health (PADOH) reports low activity levels across the state. Since Sept 27, 2020 there have been 2,195 laboratory confirmed cases of influenza (positive by rapid test, PCR, or culture), which increased by 148 reports since last week. 25 influenza-associated hospitalizations and 10 deaths have been reported. For more information, please visit: <https://www.health.pa.gov/topics/disease/Flu/Pages/2020-21-Flu.aspx>

## United States

As of January 16, 2021, the CDC reports that seasonal influenza activity remains lower than usual for this time of year. In clinical laboratories, 23 (0.1%) of 21,244 specimens tested positive for influenza in Week 1. To date, clinical laboratories have seen 732 (63.2%) influenza B positive specimens and 427 (36.8%) of influenza A positive samples. 136 laboratory-confirmed influenza hospitalizations have been reported through FluSurv-Net, bringing hospitalization rate to 0.5 per 100,000 population. In comparison, the hospitalization rate at this time last year was 19.9 per 100,000 population. For more information, please visit: <https://www.cdc.gov/flu/weekly/index.htm>

**All institutional outbreaks and hospitalized and fatal cases of influenza are to be reported to PDPH.**

Phone: (215) 685-6742 Fax: (215) 238-6947 Email: [ACD@phila.gov](mailto:ACD@phila.gov) Reporting requirements and forms are posted online at [hip.phila.gov](http://hip.phila.gov)