



PHILLY FLU FINDINGS

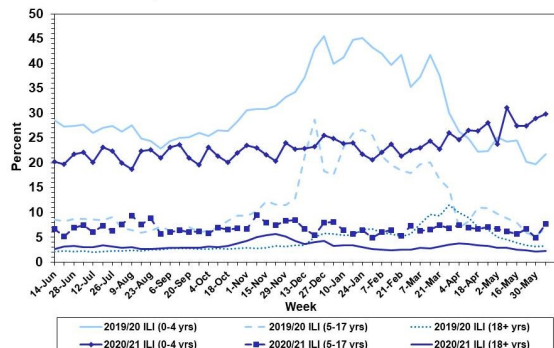
Philadelphia Department of Public Health
 Seasonal Influenza Surveillance Report
 MMWR Week 23: June 6, 2021—June 12, 2021

Philadelphia Influenza Activity

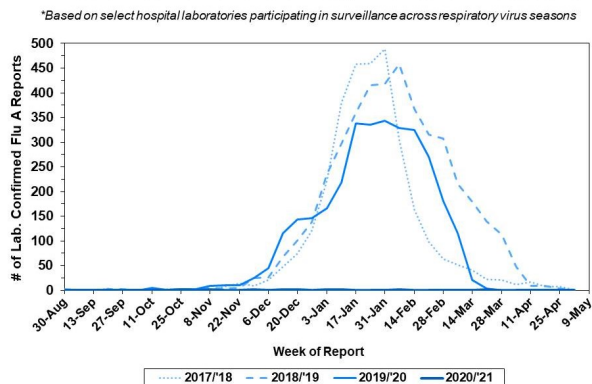
Please note these data are provisional and subject to change.

After remaining below normal for much of the season, febrile/flu-like illnesses have trended upwards over the last several weeks for pediatric age groups. This is not the result of increasing influenza activity, however, as once again no specimen was reported as positive for influenza A or B from our 6 sentinel hospital laboratories for week 23. Since Sept. 27, 2020, there have been 11 reports of severe influenza (Philadelphia resident, positive by rapid test, PCR or culture, and hospitalized for ≥ 24 hrs). Zero influenza outbreaks were reported (≥ 1 case of laboratory confirmed flu reported in a long term care facility). Zero influenza-associated deaths confirmed by PCR have been reported.

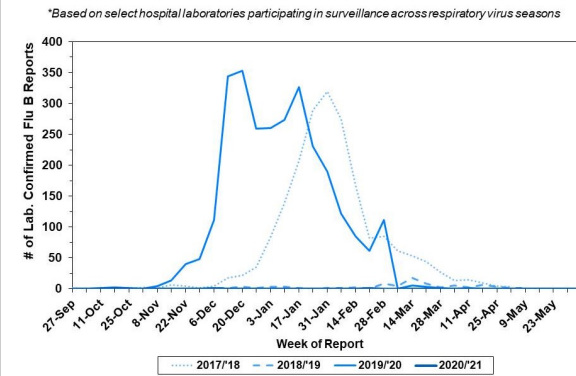
Febrile/Flu-like Illnesses at Philadelphia Emergency Departments, Current Season Compared with Previous Season



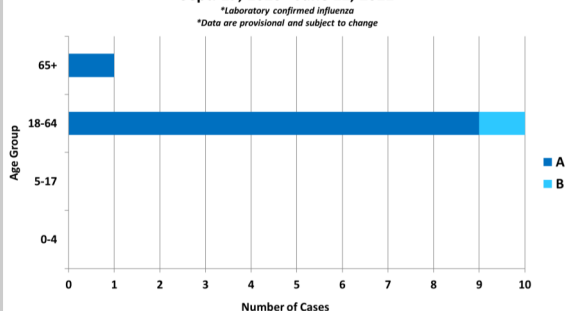
Laboratory-Based Surveillance for Influenza A Philadelphia, 2017/2018 through 2020/2021 Seasons*



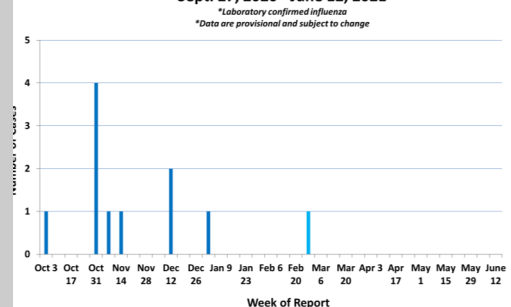
Laboratory-Based Surveillance for Influenza B Philadelphia, 2017/2018 through 2020/2021 Seasons*



Hospitalized Influenza* by Age Group and Influenza Type Sept. 27, 2020 - June 12, 2021



Weekly Counts of Hospitalizations by Influenza Type* Sept. 27, 2020 - June 12, 2021



Pennsylvania

As of May 22, 2021, the Pennsylvania Department of Health (PADOH) reported low level of flu activity this season. There were a total of 3,664 laboratory confirmed cases of influenza (positive by rapid test, PCR, or culture), a 95% decrease from the cumulative case count last year at this time. 45 influenza-associated hospitalizations have been reported across PA. 21 deaths have been reported this flu season. For more information, please visit: <https://www.health.pa.gov/topics/disease/Flu/Pages/2020-21-Flu.aspx>

United States

As of June 12, 2021, the CDC reports that seasonal influenza activity remained much lower than usual this season. In week 23, clinical laboratories reported 22 specimens (0.1%) of 20,056 specimens tested positive for influenza. Similar low reports of influenza positives reported in public health laboratories. All jurisdictions reported minimal level of flu activity. For more information, please visit: <https://www.cdc.gov/flu/weekly/index.htm>

All institutional outbreaks and hospitalized and fatal cases of influenza are to be reported to PDPH.

Phone: (215) 685-6742 Fax: (215) 238-6947 Email: ACD@phila.gov Reporting requirements and forms are posted online at hip.phila.gov