



# PHILLY FLU FINDINGS

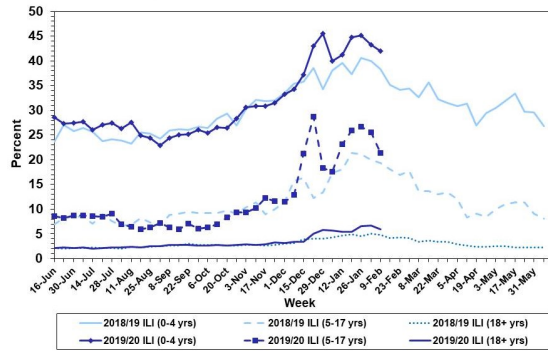
Philadelphia Department of Public Health  
 Seasonal Influenza Surveillance Report  
 MMWR Week 7: Feb 9, 2020 — Feb 15, 2020

## Philadelphia Influenza Activity

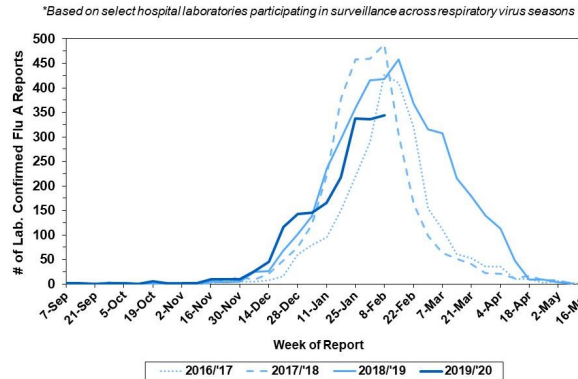
Please note these data are provisional and subject to change.

Febrile/flu-like illnesses decreased among all age groups during week 7. 534 specimens were reported from our sentinel hospital laboratory surveillance for influenza A and B during the same time period among the 6 participating laboratories, a majority of which (344) was influenza A. 70 reports of severe influenza (Philadelphia resident, positive by rapid test, PCR or culture, and hospitalized for ≥ 24 hrs) have been reported this week (season-to-date = 840), with 56 reports (80%) positive for influenza A. 3 influenza outbreaks (≥ 1 case of laboratory confirmed influenza reported in a long term care facility) were reported. 16 influenza-associated deaths have been reported with no pediatric mortalities to date.

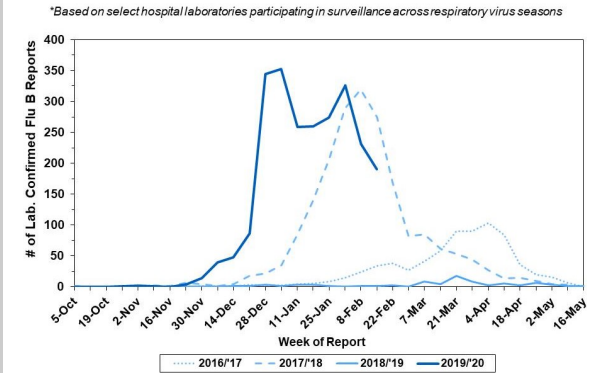
**Febrile/Flu-like Illnesses at Philadelphia Emergency Departments, Current Season Compared with Previous Season**



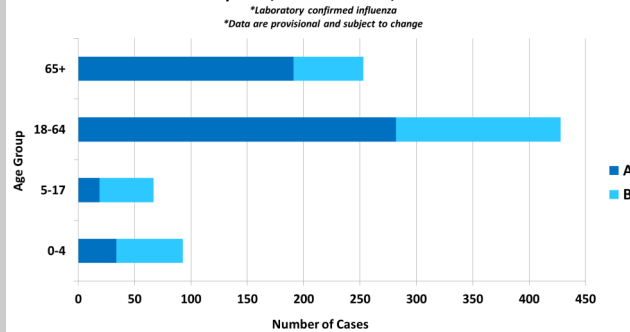
**Laboratory-Based Surveillance for Influenza A Philadelphia, 2016/2017 through 2019/2020 Seasons\***



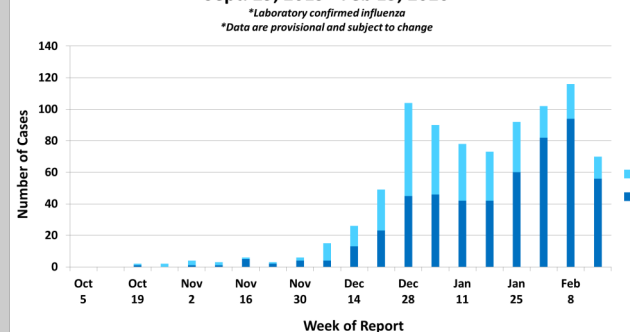
**Laboratory-Based Surveillance for Influenza B Philadelphia, 2016/2017 through 2019/2020 Seasons\***



**Hospitalized Influenza\* by Age Group and Influenza Type Sept. 29, 2019 - Feb. 15, 2020**



**Weekly Counts of Hospitalizations by Influenza Type\* Sept. 29, 2019 - Feb 15, 2020**



## Pennsylvania

The Pennsylvania Department of Health continues to report widespread activity, with slight decrease in positive laboratory tests from about 12,000 cases reported last week to just under 8000 cases reported this week. Of the 198 sub-typing results from the state public health lab, A/pH1N1 was reported in 74% of tests. 1,871 flu-associated hospitalizations and 54 flu-associated deaths have been reported. For more information, please visit: <https://www.health.pa.gov/topics/disease/Flu/Pages/2019-20-Flu.aspx>

## United States

Flu activity has decreased slightly this week, with percentage of specimen testing positive for influenza B reducing while the percentage testing positive for influenza A continuing to increase. Interim estimates of flu vaccine effectiveness (VE) for preventing medically attended, laboratory-confirmed flu virus infection shows VE was 45% against influenza A and B virus types combined, 50% against influenza B/Victoria, and 37% against A(H1N1)pdm09. 105 influenza-associated deaths in children have been reported this season. For more information, please visit: <https://www.cdc.gov/flu/weekly/index.htm>

**All institutional outbreaks and hospitalized and fatal cases of influenza are to be reported to PDPH.**

Phone: (215) 685-6742 Fax: (215) 238-6947 Email: [ACD@phila.gov](mailto:ACD@phila.gov) Reporting requirements and forms are posted online at [hip.phila.gov](http://hip.phila.gov)