



# PHILLY FLU FINDINGS

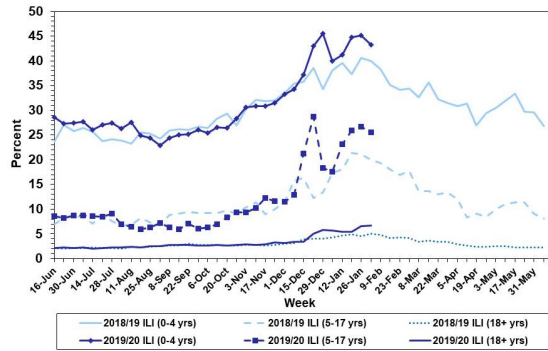
Philadelphia Department of Public Health  
 Seasonal Influenza Surveillance Report  
 MMWR Week 6: Feb 2, 2020 —Feb 8, 2020

## Philadelphia Influenza Activity

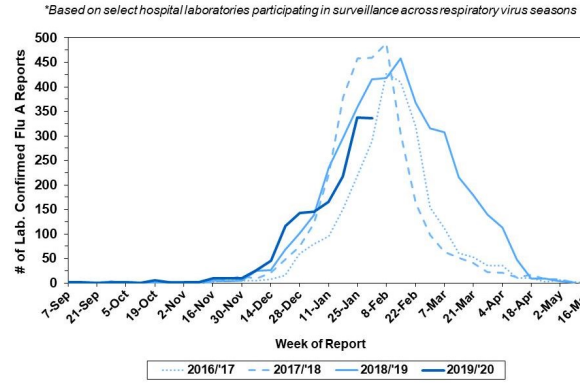
Please note these data are provisional and subject to change.

Febrile/flu-like illnesses decreased among all age groups during week 6. 567 specimens were reported from our sentinel hospital laboratory surveillance for influenza A and B during the same time period among the 6 participating laboratories, a majority of which (336) was influenza A. 99 reports of severe influenza (Philadelphia resident, positive by rapid test, PCR or culture, and hospitalized for ≥ 24 hrs) have been reported this week (season-to-date = 746), with 80 (81%) positive for influenza A. 2 influenza outbreaks (≥ 1 case of laboratory confirmed influenza reported in a long term care facility) were reported during Week 6. 10 influenza-associated deaths have been reported season-to-date.

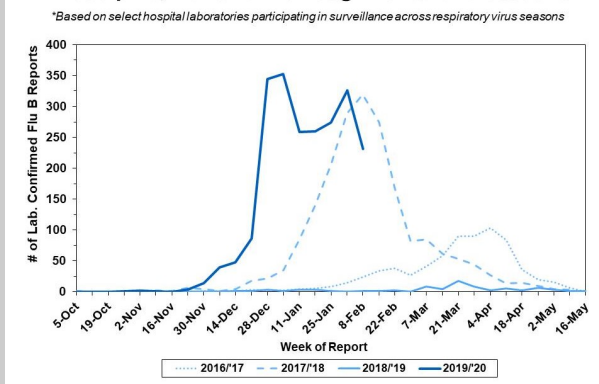
**Febrile/Flu-like Illnesses at Philadelphia Emergency Departments, Current Season Compared with Previous Season**



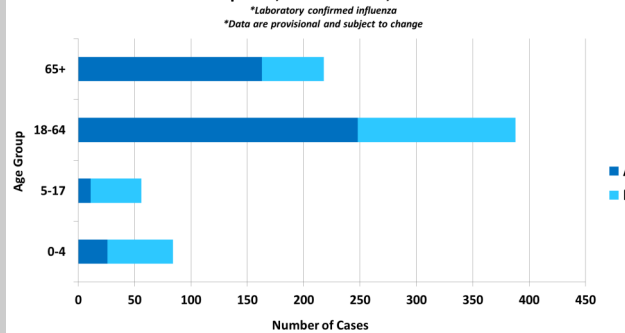
**Laboratory-Based Surveillance for Influenza A Philadelphia, 2016/2017 through 2019/2020 Seasons\***



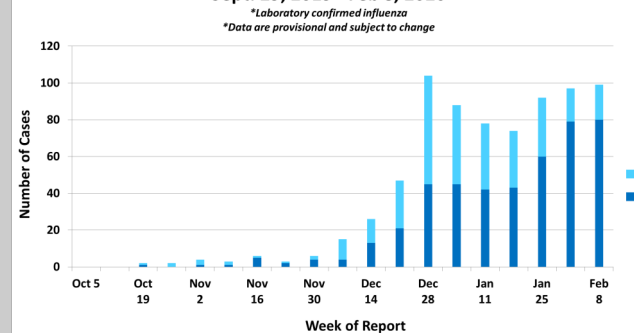
**Laboratory-Based Surveillance for Influenza B Philadelphia, 2016/2017 through 2019/2020 Seasons\***



**Hospitalized Influenza\* by Age Group and Influenza Type**  
 Sept. 29, 2019 - Feb. 8, 2020



**Weekly Counts of Hospitalizations by Influenza Type\***  
 Sept. 29, 2019 - Feb. 8, 2020



## Pennsylvania

The Pennsylvania Department of Health continues to report widespread activity, with influenza A(H1N1)pdm09 being the most detected flu virus. Of the 72,260 season-to-date, lab-confirmed cases of influenza (positive by rapid test, PCR, or culture), 25,542 have been identified as influenza A. 1,632 flu-associated hospitalizations and 47 flu-associated deaths have been reported. 0 deaths have been reported for 0-18 year olds. For more information, please visit: <https://www.health.pa.gov/topics/disease/Flu/Pages/2019-20-Flu.aspx>

## United States

Flu activity has increased over the past four weeks. Hospitalization rates among children and young adults are higher at this time than in recent seasons. This week, from 1,258 positive specimens tested at clinical laboratories, 833 (66.2%) were positive for influenza A. 92 influenza-associated deaths in children have been reported this season. For more information, please visit: <https://www.cdc.gov/flu/weekly/index.htm>

**All institutional outbreaks and hospitalized and fatal cases of influenza are to be reported to PDPH.**

Phone: (215) 685-6742 Fax: (215) 238-6947 Email: [ACD@phila.gov](mailto:ACD@phila.gov) Reporting requirements and forms are posted online at [hip.phila.gov](http://hip.phila.gov)