



PHILLY FLU FINDINGS

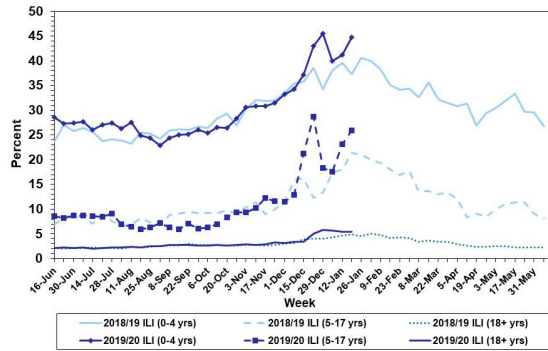
Philadelphia Department of Public Health
 Seasonal Influenza Surveillance Report
 MMWR Week 4 Jan 19, 2020 —Jan 25, 2020

Philadelphia Influenza Activity

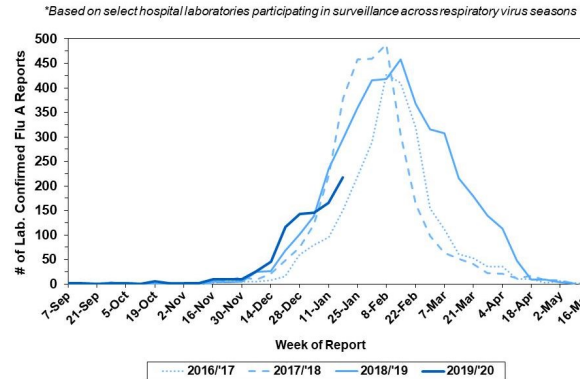
Please note these data are provisional and subject to change.

Febrile/flu-like illnesses increased in children and adolescents during week 4. 492 specimens were reported from our sentinel hospital laboratory surveillance for influenza A and B during the same time period among the 6 participating laboratories, a majority of which (274) was influenza B. 57 reports of severe influenza (Philadelphia resident, positive by rapid test, PCR or culture, and hospitalized for ≥ 24 hrs) have been reported this week (season-to-date = 516), with 37 (65%) positive for influenza A. 3 influenza outbreaks (≥ 1 case of laboratory confirmed influenza reported in a long term care facility) were reported during Week 4. 7 influenza-associated deaths have been reported season-to-date.

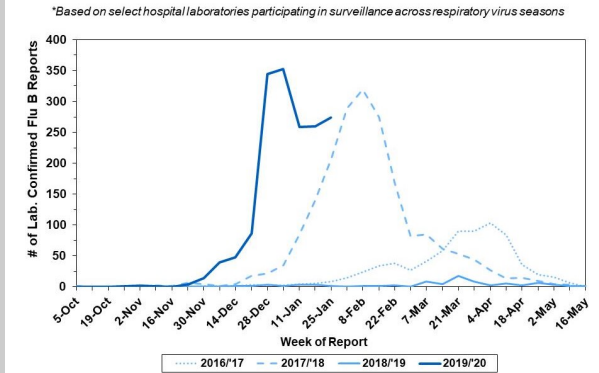
Febrile/Flu-like Illnesses at Philadelphia Emergency Departments, Current Season Compared with Previous Season



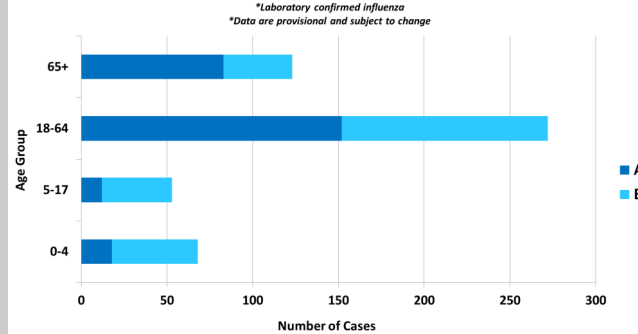
Laboratory-Based Surveillance for Influenza A Philadelphia, 2016/2017 through 2019/2020 Seasons*



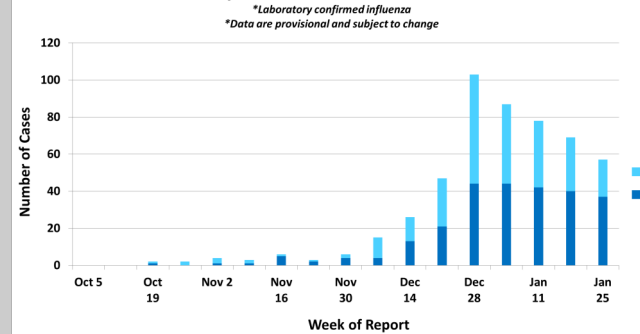
Laboratory-Based Surveillance for Influenza B Philadelphia, 2016/2017 through 2019/2020 Seasons*



Hospitalized Influenza* by Age Group and Influenza Type
 Sept. 29, 2019 - Jan. 25, 2020



Weekly Counts of Hospitalizations by Influenza Type*
 Sept. 29, 2019 - Jan. 25, 2020



Pennsylvania

The Pennsylvania Department of Health reports widespread activity, with a slight decrease in positive laboratory tests but a slight increase in outpatient ILI visits. Of the 48,510 season-to-date, lab-confirmed cases of influenza (positive by rapid test, PCR, or culture), 32,598 have been identified as influenza B. 1,089 flu-associated hospitalizations and 33 flu-associated deaths have been reported. For more information, please visit: <https://www.health.pa.gov/topics/disease/Flu/Pages/2019-20-Flu.aspx>

United States

Flu activity has increased over the past two weeks. The percentage of laboratory positive specimen from clinical labs has increased and the number of jurisdictions experiencing high ILI activity increased from 37 last week to 44 this week. Pneumonia and influenza mortality remain low. This week, from 1,129 positive specimens tested at public health laboratories, 629 (55.7%) were influenza A, with 96.1% A(H1N1)pdm09 viruses. For more information, please visit: <https://www.cdc.gov/flu/weekly/index.htm>

All institutional outbreaks and hospitalized and fatal cases of influenza are to be reported to PDPH.

Phone: (215) 685-6742 Fax: (215) 238-6947 Email: ACD@phila.gov Reporting requirements and forms are posted online at hip.phila.gov