



# PHILLY FLU FINDINGS

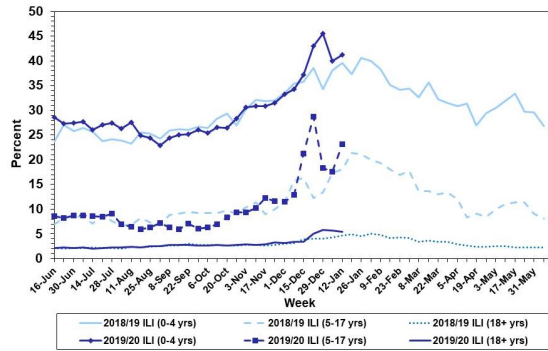
Philadelphia Department of Public Health  
 Seasonal Influenza Surveillance Report  
 MMWR Week 3 Jan 12, 2020 —Jan 18, 2020

## Philadelphia Influenza Activity

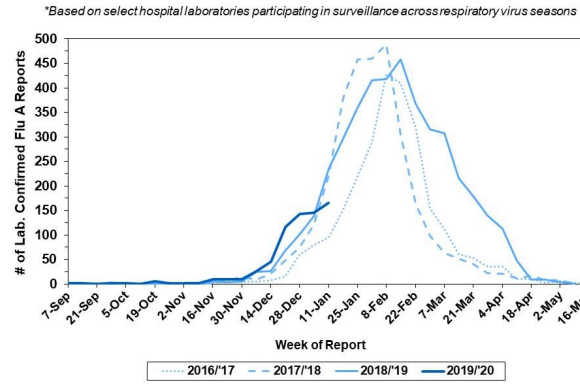
Please note these data are provisional and subject to change.

Febrile/flu-like illnesses increased in children and adolescents during week 3. 426 specimens were reported from our sentinel hospital laboratory surveillance for influenza A and B during the same time period among the 6 participating laboratories, a majority of which (260) was influenza B. 63 reports of severe influenza (Philadelphia resident, positive by rapid test, PCR or culture, and hospitalized for ≥ 24 hrs) have been reported this week (season-to-date= 445), with 38 (63%) positive for influenza A. 10 influenza outbreaks (≥ 1 case of laboratory confirmed influenza reported in a long term care facility) have been reported thus far. 6 influenza-associated deaths have been reported season-to-date.

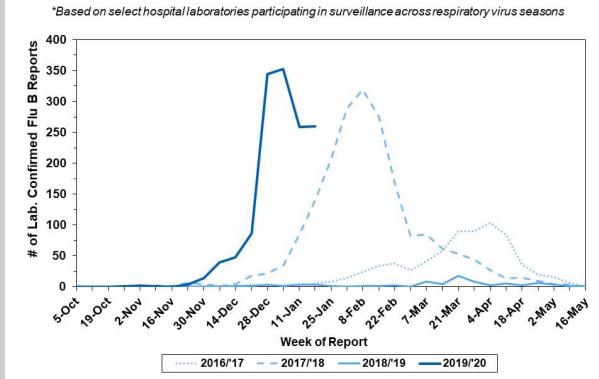
**Febrile/Flu-like Illnesses at Philadelphia Emergency Departments, Current Season Compared with Previous Season**



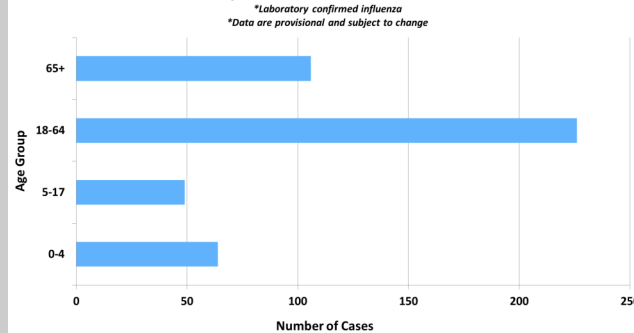
**Laboratory-Based Surveillance for Influenza A Philadelphia, 2016/2017 through 2019/2020 Seasons\***



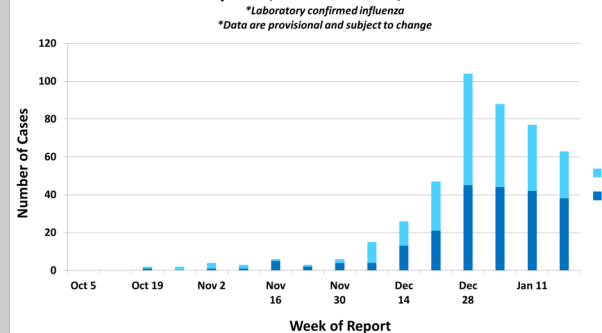
**Laboratory-Based Surveillance for Influenza B Philadelphia, 2016/2017 through 2019/2020 Seasons\***



**Hospitalized Influenza\* by Age Group Sept. 29, 2019 - Jan. 18, 2020**



**Weekly Counts of Hospitalizations by Influenza Type\* Sept. 29, 2019 - Jan. 18, 2020**



## Pennsylvania

The Pennsylvania Department of Health reports widespread activity, with a decrease in positive influenza laboratory tests. Of the 39,421 season-to-date, lab-confirmed cases of influenza (positive by rapid test, PCR, or culture), 27,156 have been identified as influenza B. Of the 115 specimen tested for subtyping, 72.7% have been identified as A/pH1N1. 836 flu-associated hospitalizations and 24 flu-associated deaths have been reported. For more information, please visit: <https://www.health.pa.gov/topics/disease/Flu/Pages/2019-20-Flu.aspx>

## United States

The percentage of laboratory positive specimen from clinical labs (25.6%) and outpatient ILI activity (5.0%) increased slightly this week. Hospitalization rates (24.1 per 100,000) remain similar to what has been seen at this time during recent seasons. Approximately equal numbers of B/Victoria and A(H1N1)pdm09 viruses have been reported from clinical and public health laboratories. Almost all (>99%) tested viruses show susceptibility to antiviral medications. For more information, please visit: <https://www.cdc.gov/flu/weekly/index.htm>

**All institutional outbreaks and hospitalized and fatal cases of influenza are to be reported to PDPH.**

Phone: (215) 685-6742 Fax: (215) 238-6947 Email: [ACD@phila.gov](mailto:ACD@phila.gov) Reporting requirements and forms are posted online at [hip.phila.gov](http://hip.phila.gov)