



# PHILLY FLU FINDINGS

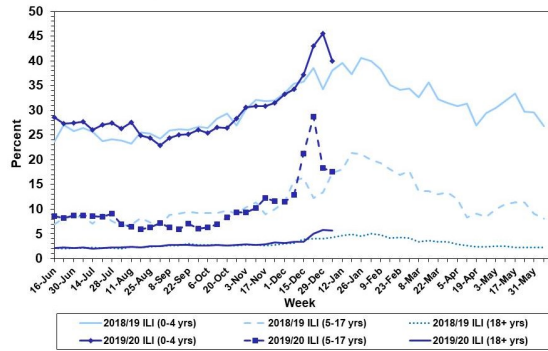
Philadelphia Department of Public Health  
 Seasonal Influenza Surveillance Report  
 MMWR Week 2: Jan 5, 2020 — Jan 11, 2020

## Philadelphia Influenza Activity

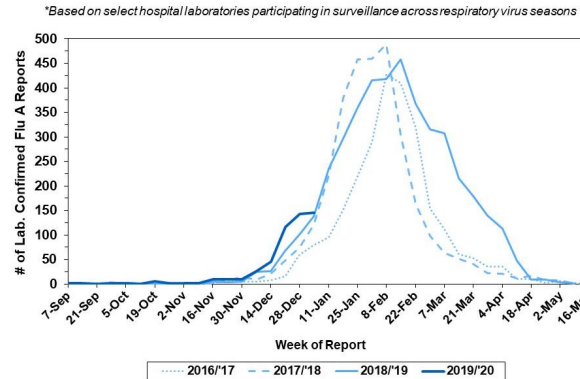
Please note these data are provisional and subject to change.

Febrile/flu-like illnesses decreased among all age groups. Four-hundred and five positive specimens were reported from our sentinel hospital laboratory surveillance for influenza A and B during the same time period among the 6 participating laboratories, a majority of which (259) was influenza B. 19 reports of severe influenza (Philadelphia resident, positive by rapid test, PCR or culture, and hospitalized for  $\geq 24$  hrs) have been reported this week, with 13 positive for influenza A. 1 influenza outbreak ( $\geq 1$  case of laboratory confirmed influenza reported in a long term care facility) was reported this week. 4 influenza-associated deaths have been reported season-to-date.

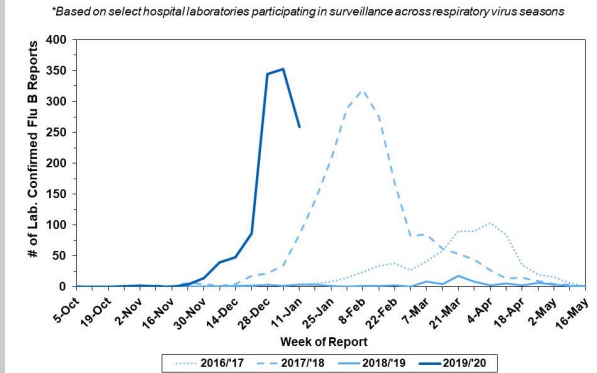
**Febrile/Flu-like Illnesses at Philadelphia Emergency Departments, Current Season Compared with Previous Season**



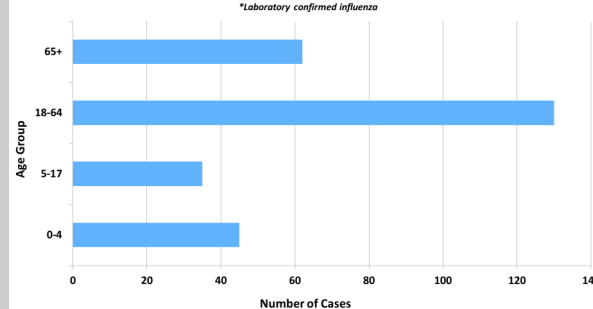
**Laboratory-Based Surveillance for Influenza A Philadelphia, 2016/2017 through 2019/2020 Seasons\***



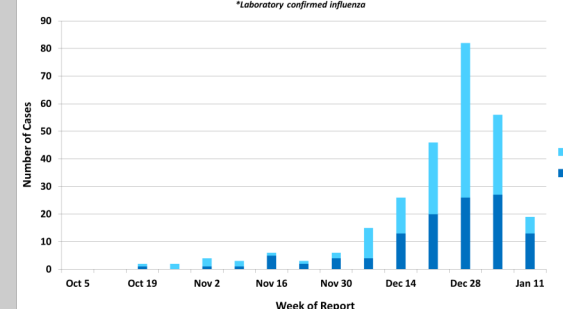
**Laboratory-Based Surveillance for Influenza B Philadelphia, 2016/2017 through 2019/2020 Seasons\***



**Hospitalized Influenza\* by Age Group Sept. 29, 2019 - Jan. 11, 2020**



**Weekly Counts of Hospitalizations by Influenza Type\* Sept. 29, 2019 - Jan. 11, 2020**



## Pennsylvania

The Pennsylvania Department of Health reports widespread activity, with a decrease in influenza cases and emergency visits associated with influenza-like-illness (ILI). Of the 32,322 season-to-date, lab-confirmed cases of influenza (positive by rapid test, PCR, or culture), 22,906 (70.9%) have been identified as influenza B. 688 flu-associated hospitalizations and 24 influenza-associated deaths have been reported. For more information, please visit: <https://www.health.pa.gov/topics/disease/Flu/Pages/2019-20-Flu.aspx>

## United States

Visits to healthcare providers for ILI has decreased from 5.7% to 4.7%, while the rate of laboratory confirmed hospitalizations increased to 19.9 per 100,000, which is similar to previous influenza seasons. In recent weeks, there has been an increase of influenza A(H1N1)pdm09 viruses reported nationally, with week 2 reporting 50.4% influenza A positive specimen from public health laboratories. CDC has antigenically characterized 70 A(H1N1)pdm09 influenza viruses and all were antigenically similar to the cell-grown reference viruses in the current vaccine. Almost all (>99%) tested viruses show susceptibility antiviral medications. For more information, please visit: <https://www.cdc.gov/flu/weekly/index.htm>

**All institutional outbreaks and hospitalized and fatal cases of influenza are to be reported to PDPH.**

Phone: (215) 685-6742 Fax: (215) 238-6947 Email: [ACD@phila.gov](mailto:ACD@phila.gov) Reporting requirements and forms are posted online at [hip.phila.gov](http://hip.phila.gov)