



# PHILLY FLU FINDINGS

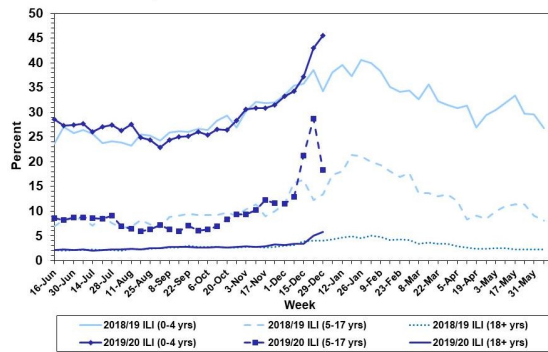
Philadelphia Department of Public Health  
 Seasonal Influenza Surveillance Report  
 MMWR Week 1: Dec 29, 2019 — Jan 4, 2020

## Philadelphia Influenza Activity

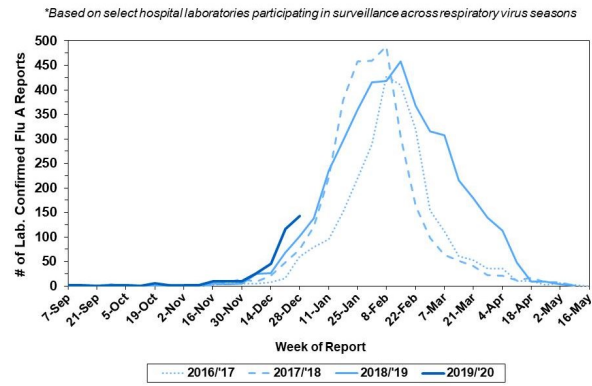
Please note these data are provisional and subject to change.

Febrile/flu-like illnesses increased among children ages 0-4 years and adults (18 years and older). Four-hundred and ninety-six positive specimens were reported from our sentinel hospital laboratory surveillance for influenza A and B during the same time period among the 6 participating laboratories, a majority of which (353) was influenza B. 56 reports of severe influenza (Philadelphia resident, positive by rapid test, PCR or culture, and hospitalized for  $\geq 24$  hrs) have been reported this week, with 27 positive for influenza A. 2 influenza outbreaks ( $\geq 1$  case of laboratory confirmed influenza reported in a long term care facility) were reported this week. 3 influenza-associated deaths have been reported season-to-date.

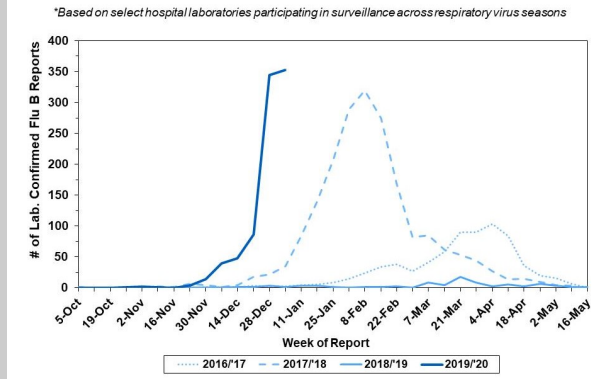
**Febrile/Flu-like Illnesses at Philadelphia Emergency Departments, Current Season Compared with Previous Season**



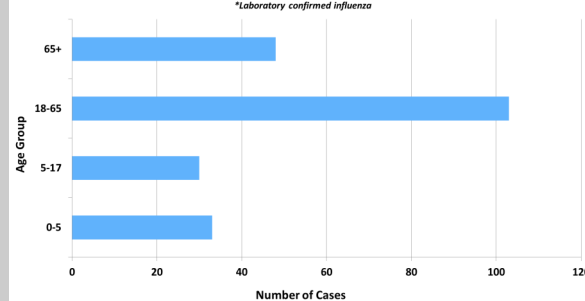
**Laboratory-Based Surveillance for Influenza A Philadelphia, 2016/2017 through 2019/2020 Seasons\***



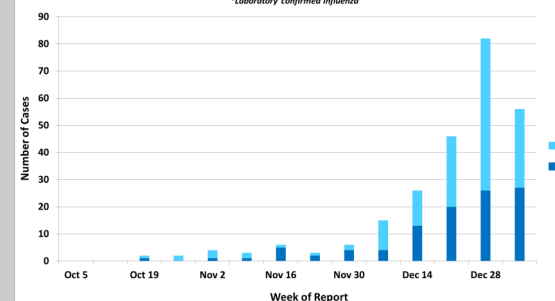
**Laboratory-Based Surveillance for Influenza B Philadelphia, 2016/2017 through 2019/2020 Seasons\***



**Hospitalized Influenza\* by Age Group Sept. 29, 2019 - Jan. 4, 2020**



**Weekly Counts of Hospitalizations by influenza Type\* Sept. 29, 2019 - Jan. 4, 2020**



## Pennsylvania

The Pennsylvania Department of Health reports widespread activity. Reports of lab-confirmed cases decreased from Week 52 of 2019 (n=6,800) to Week 1 of 2020 (n=5,800). Of the 25,362 season-to-date, lab-confirmed cases of influenza (positive by rapid test, PCR, or culture), 18,488 (72.9%) have been identified as influenza B. 477 flu-associated hospitalizations and 13 influenza-associated deaths have been reported. For more information, please visit: <https://www.health.pa.gov/topics/disease/Flu/Pages/2019-20-Flu.aspx>

## United States

46 states are reporting widespread influenza activity, with 36 states experiencing high ILI activity. The percentage of respiratory specimen that tested positive for influenza at clinical labs decreased from 26.4% to 23.3% this week. The majority of specimens tested in clinical laboratories were positive for influenza B (7,257, 63.3%). CDC has antigenically characterized 50 B/Victoria and 66 A(H1N1) influenza viruses and has found that 29 (58%) of B/Victoria and 66 (100%) of A(H1N1) viruses were antigenically similar to the cell-grown reference viruses in the current vaccine. Almost all (>99%) tested viruses show susceptibility antiviral medications. For more information, please visit: <https://www.cdc.gov/flu/weekly/index.htm>

**All institutional outbreaks and hospitalized and fatal cases of influenza are to be reported to PDPH.**

Phone: (215) 685-6742 Fax: (215) 238-6947 Email: [ACD@phila.gov](mailto:ACD@phila.gov) Reporting requirements and forms are posted online at [hip.phila.gov](http://hip.phila.gov)