



# PHILLY FLU FINDINGS

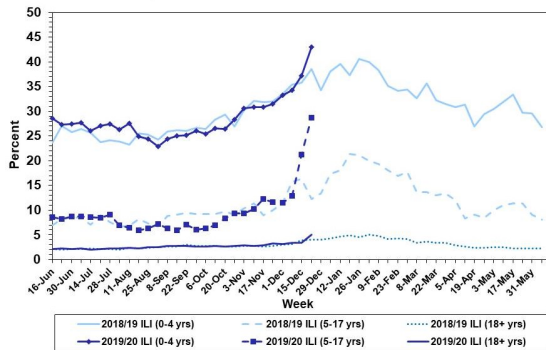
Philadelphia Department of Public Health  
 Seasonal Influenza Surveillance Report  
 MMWR Week 52: Dec 22—Dec 28, 2019

## Philadelphia Influenza Activity

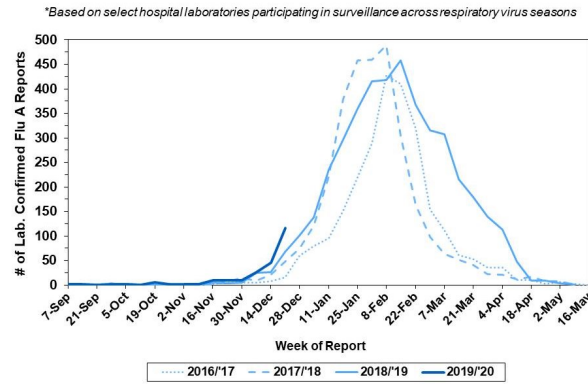
Please note these data are provisional and subject to change.

Febrile/flu-like illnesses increased among all age groups. Four-hundred and sixty positive specimens were reported from our sentinel hospital laboratory surveillance for influenza A and B during the same time period among the 6 participating laboratories, a majority of which (344) was influenza B. There were 75 reports of severe influenza (Philadelphia resident, positive by rapid test, PCR or culture, and hospitalized for  $\geq 24$  hrs) during this time period, with 49 (65%) positive for Influenza B. There was 1 influenza outbreaks ( $\geq 1$  case of laboratory confirmed influenza reported in a long term care facility) reported this week, with a total of 3 outbreaks this season. One influenza-associated death was reported during week 52.

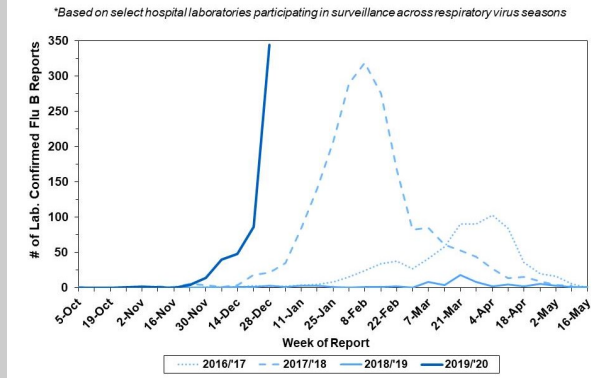
**Febrile/Flu-like Illnesses at Philadelphia Emergency Departments, Current Season Compared with Previous Season**



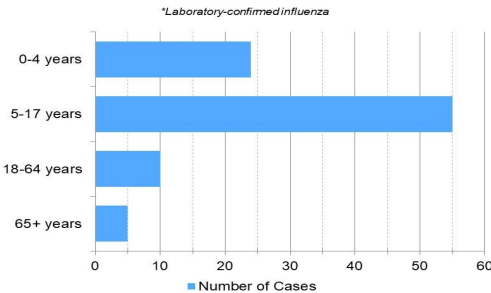
**Laboratory-Based Surveillance for Influenza A Philadelphia, 2016/2017 through 2019/2020 Seasons\***



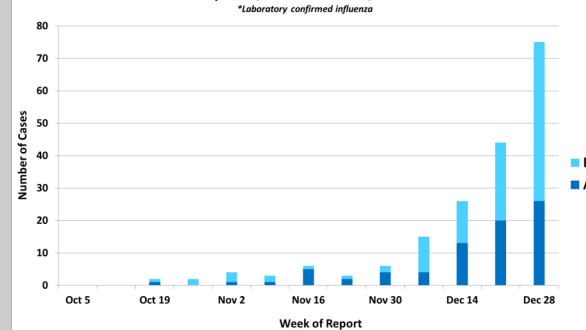
**Laboratory-Based Surveillance for Influenza B Philadelphia, 2016/2017 through 2019/2020 Seasons\***



**Hospitalized Influenza\* by Age Group Sept 29, 2019 – Dec 28, 2019**



**Weekly Counts of Hospitalizations by Influenza Type\* Sept. 29, 2019 - Dec. 28, 2019**



## Pennsylvania

The Pennsylvania Department of Health (PAOH) has reported widespread influenza activity throughout the state, with flu activity increasing in all regions. Of the 17,349 laboratory confirmed cases of influenza (positive by rapid test, PCR, or culture), 13,247 (76.4%) have been identified as influenza B and 1,378 (20.8%) as influenza A. 9 influenza-associated deaths have been reported thus far this season. For more information, please visit: <https://www.health.pa.gov/topics/disease/Flu/Pages/2019-20-Flu.aspx>

## United States

All 50 states are reporting widespread influenza activity, with high ILI activity in 37 states. The majority of specimens tested in clinical laboratories since week 40 have been positive for influenza B (8,157, 67.9%). CDC has antigenically characterized 50 B/Victoria and 66 A(H1N1) influenza viruses and has found that 29 (58%) of B/Victoria and 66 (100%) of A(H1N1) viruses were antigenically similar to the cell-grown reference viruses in the current vaccine. Almost all (>99%) tested viruses show susceptibility to oseltamivir, zanamivir, baloxavir and peramivir. For more information, please visit: <https://www.cdc.gov/flu/weekly/index.htm>

**All institutional outbreaks and hospitalized and fatal cases of influenza are to be reported to PDPH.**

Phone: (215) 685-6742 Fax: (215) 238-6947 Email: [ACD@phila.gov](mailto:ACD@phila.gov) Reporting requirements and forms are posted online at [hip.phila.gov](http://hip.phila.gov)